



**AUGUSTUS  
MINERALS**  
LIMITED

## Investor Presentation

---

**31 May 2023**

**ASX: AUG**

**Lithium – Rare Earths - Copper  
Critical Minerals**

**Ti Tree Shear Project  
Gascoyne Region, WA**

# Disclaimer and Forward- Looking Statements



These presentation materials and any accompanying verbal presentation (together, the Presentation Materials) have been prepared by Augustus Minerals Limited (Company) as at 31 May 2023 and statements are current only as at that date. Information in the Presentation Materials remains subject to change without notice. The Company has no responsibility or obligation to inform you of any matter arising or coming to its notice, after the date of this document, which may affect any matter referred to in this document. By receiving the Presentation Materials, you acknowledge and represent to the Company that you have read, understood and accepted the terms of this disclaimer. It is the responsibility of all recipients of these Presentation Materials to obtain all necessary approvals to receive these Presentation Materials and receipt of the Presentation Materials will be taken by the Company to constitute a representation and warranty that all relevant approvals have been obtained.

## NOT AN OFFER

These Presentation Materials are for information purposes only. The Presentation Materials do not comprise a prospectus, product disclosure statement or other offering document under Australian law (and will not be lodged with the Australian Securities and Investments Commission) or any other law. The Presentation Materials also do not constitute or form part of any invitation, offer for sale or subscription or any solicitation for any offer to buy or subscribe for any securities nor shall they or any part of them form the basis of or be relied upon in connection therewith or act as any inducement to enter into any contract or commitment with respect to securities. In particular, these Presentation Materials do not constitute an offer to sell or a solicitation to buy, securities in the United States of America.

## NOT INVESTMENT ADVICE

The Presentation Materials are not investment or financial product advice (nor tax, accounting or legal advice) and are not intended to be used for the basis of making an investment decision. Recipients should obtain their own advice before making any investment decision.

## SUMMARY INFORMATION

The Presentation Materials do not purport to be all inclusive or to contain all information about the Company or any of the assets, current or future, of the Company. The Presentation Materials contain summary information about the Company and its activities which is current as at the date of the Presentation Materials. The information in the Presentation Materials is of a general nature and does not purport to contain all the information which a prospective investor may require in evaluating a possible investment in the Company or that would be required in a prospectus or product disclosure statement or other offering document prepared in accordance with the requirements of Australian law or the laws of any other jurisdiction, including the United States of America.

While reasonable care has been taken in relation to the preparation of the Presentation Materials, none of the Company or its directors, officers, employees, contractors, agents, or advisers nor any other person (Limited Party) guarantees or makes any representations or warranties, express or implied, as to or takes responsibility for, the accuracy, reliability, completeness or fairness of the information, opinions, forecasts, reports, estimates and conclusions contained in this document. No Limited Party represents or warrants that this document is complete or that it contains all information about the Company that a prospective investor or purchaser may require in evaluating a possible investment in the Company or acquisition of shares in the Company. To the maximum extent permitted by law, each Limited Party expressly disclaims any and all liability, including, without limitation, any liability arising out of fault or negligence, for any loss arising from the use of or reliance on information contained in this document including representations or warranties or in relation to the accuracy or completeness of the information, statements, opinions, forecasts, reports or other matters, express or implied, contained in, arising out of or derived from, or for omissions from, this document including, without limitation, any financial information, any estimates or projections and any other financial information derived therefrom.

# Disclaimer and Forward- Looking Statements



## JORC CODE

The information in the Presentation Materials relating to exploration results, exploration targets, mineral resources and ore reserves has been reported by the Company in accordance with the 2012 Edition of the 'Australasian Code for Reporting of Exploration results, Mineral Resources and Ore Reserves' (JORC Code) previously (refer to the Company's prospectus available on the Company website at <http://augustusminerals.com.au/>).

The Company confirms that it is not aware of any new information as at the date of the Presentation Materials that materially affects the information included in the Presentation Materials and that all material assumptions and technical parameters underpinning the estimates in the Company's prospectus continue to apply and have not material changed

## FORWARD LOOKING STATEMENTS

Certain statements contained in the Presentation Materials, including information as to the future financial or operating performance of the Company and its projects, are forward looking statements. Such forward looking statements involve known and unknown risks, uncertainties, assumptions and other important factors, many of which are beyond the control of the Company and which may cause actual results, performance or achievements to differ materially from those expressed or implied by such statements. Forward looking statements are provided as a general guide only, and should not be relied on as an indication or guarantee of future performance. Given these uncertainties, recipients are cautioned to not place undue reliance on any forward looking statement. Subject to any continuing obligations under applicable law the Company disclaims any obligation or undertaking to disseminate any updates or revisions to any forward looking statements in this document to reflect any change in expectations in relation to any forward looking statements or any change in events, conditions or circumstances on which any such statement is based.

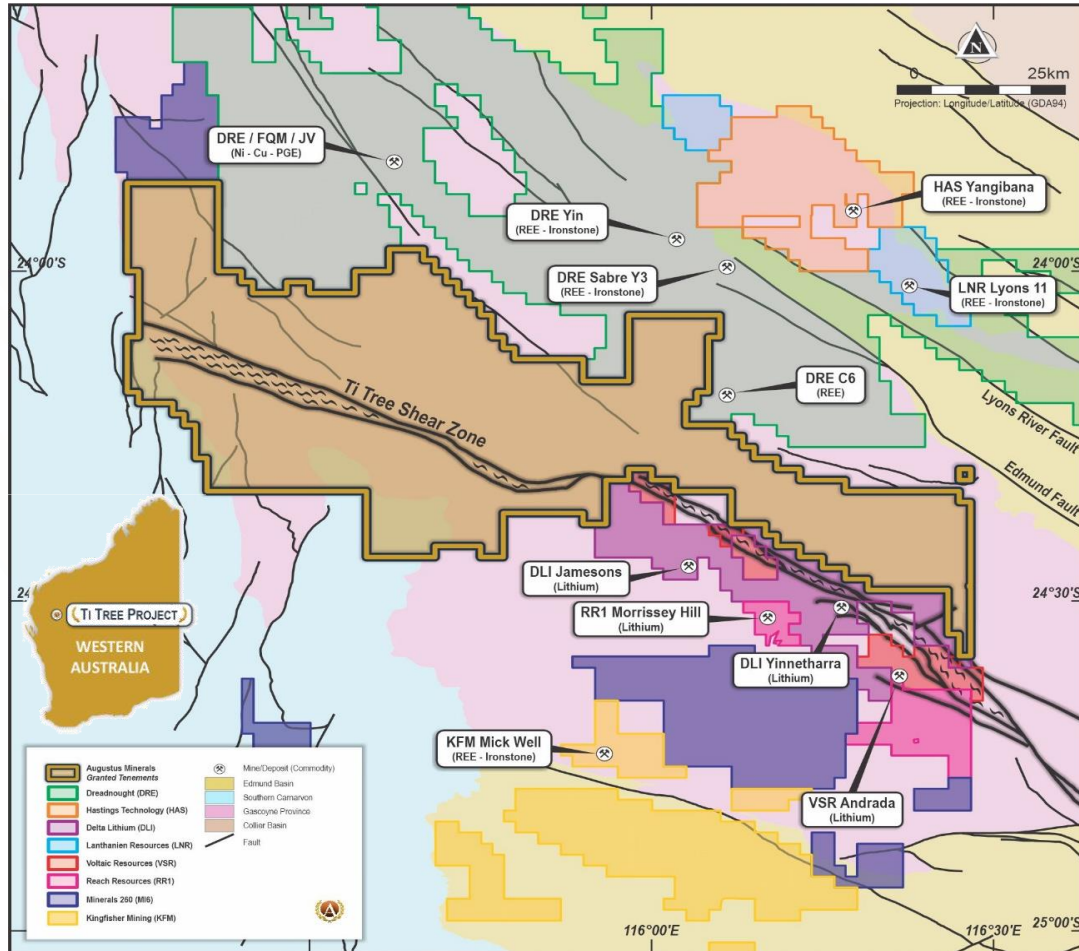
# Corporate Overview



**AUGUSTUS  
MINERALS**  
LIMITED

# Company Snapshot

Augustus Minerals is focused on aggressively advancing exploration along the highly prospective Ti-Tree Shear in the search for Critical Minerals (**Lithium, Rare Earths and Copper**).



Lithium

Rare Earths

Copper

ASX Code

AUG

Cash

\$10m

Market Cap

\$27.3m (at \$0.20)

Enterprise Value

17.3m (at \$0.20)

Shares

136.1m

Options

16.77m

Major Shareholders

41% Board & Management

Escrowed Shares

~43%

# Experienced Board & Local Experienced Management



**Andrew Reid**  
Managing Director

Andrew Reid has over 30 years' experience in the resources industry, with 20 years of expertise in mine management.

Previously, Mr Reid was COO at Hastings Ltd developing the Yangibana Rare Earths project, prior to that held COO positions with Finders Resources and BCM International.

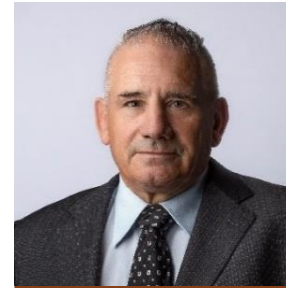
Andrew has a Bachelor of Science Degree in Geology, with further postgraduate qualifications in Mining Engineering and an MSC in Mineral Economics.

Andrew's career spans 35 years of exploration and mine development experience in multiple commodities for both majors, including Homestake and Barrick Gold, and junior ASX listed companies. He has led technical teams throughout Australia, Africa, USA, Europe and Asia, including leading the geology team at the Bawdwin base metals project in Myanmar through the DFS process.

In his most recent role Andrew has led the geology team at Hastings Technology Metals with a focus on resource growth and exploration at the Yangibana Rare Earths Project, where Mineral Resources have now grown to 29.93Mt of TREO.



**Andrew Ford**  
General Manager  
Exploration



**Brian Rodan**  
Executive Chairman

Brian Rodan has over 45 years' experience, and was the managing director and owner of Australian Contract Mining Pty Ltd (ACM), a mid-tier mining contracting company that successfully completed \$1.5 billion worth of work over a 20 year period. ACM was sold to an ASX listed company in 2017.

He is currently Executive Chairman of Siren Gold (SNG) and of Icen Gold Limited (ICL) and was a founding Director of Dacian Gold Ltd 2013, and Desert Metals Ltd 2020 and the largest shareholder upon listing both companies on the ASX.



**Graeme Smith**  
Non-Executive  
Director

Graeme Smith is an experienced resources sector chief financial officer, company secretary and corporate executive who has worked with mining and exploration companies with operations in Australia (Croesus Mining NL, Genesis Minerals Limited, Jabiru Metals Limited, Breaker Resources NL, Pluton Resources Limited) and overseas (Tanga Resources Limited, Ikwezi Mining Limited) for the past 30 years.



**Darren Holden**  
Non-Executive  
Director

Dr Darren Holden is a geologist with 28 years industry experience in mineral exploration and exploration technologies. He has worked in North America, the Pacific and Australia, where he has been involved in discovery stage copper, gold, silver, molybdenum and platinum group elements deposits. He specialises in regional to local scale targeting using the integration of geology, geophysics and geochemistry

Dr Holden holds a BSc (Hons) First Class (Geology) from The University of Western Australia and a PhD (History) from The University of Notre Dame Australia.

# Augustus Minerals Investment Proposition



## Hot emerging Geological province

- **Little historic regional exploration**
- Highly prospective geology
- Multiple discoveries of rare earths and lithium deposits in region in recent years

## Multi-Commodity discovery opportunity

- **Significant lithium, rare earths and copper targets**
- >50 high priority targets

## Large land holding Early mover advantage

- 3,600km<sup>2</sup> in single coherent block of tenements
- 85km of strike along the Ti-Tree Shear
- **Emerging province for critical minerals discoveries**

## Fertile Geology

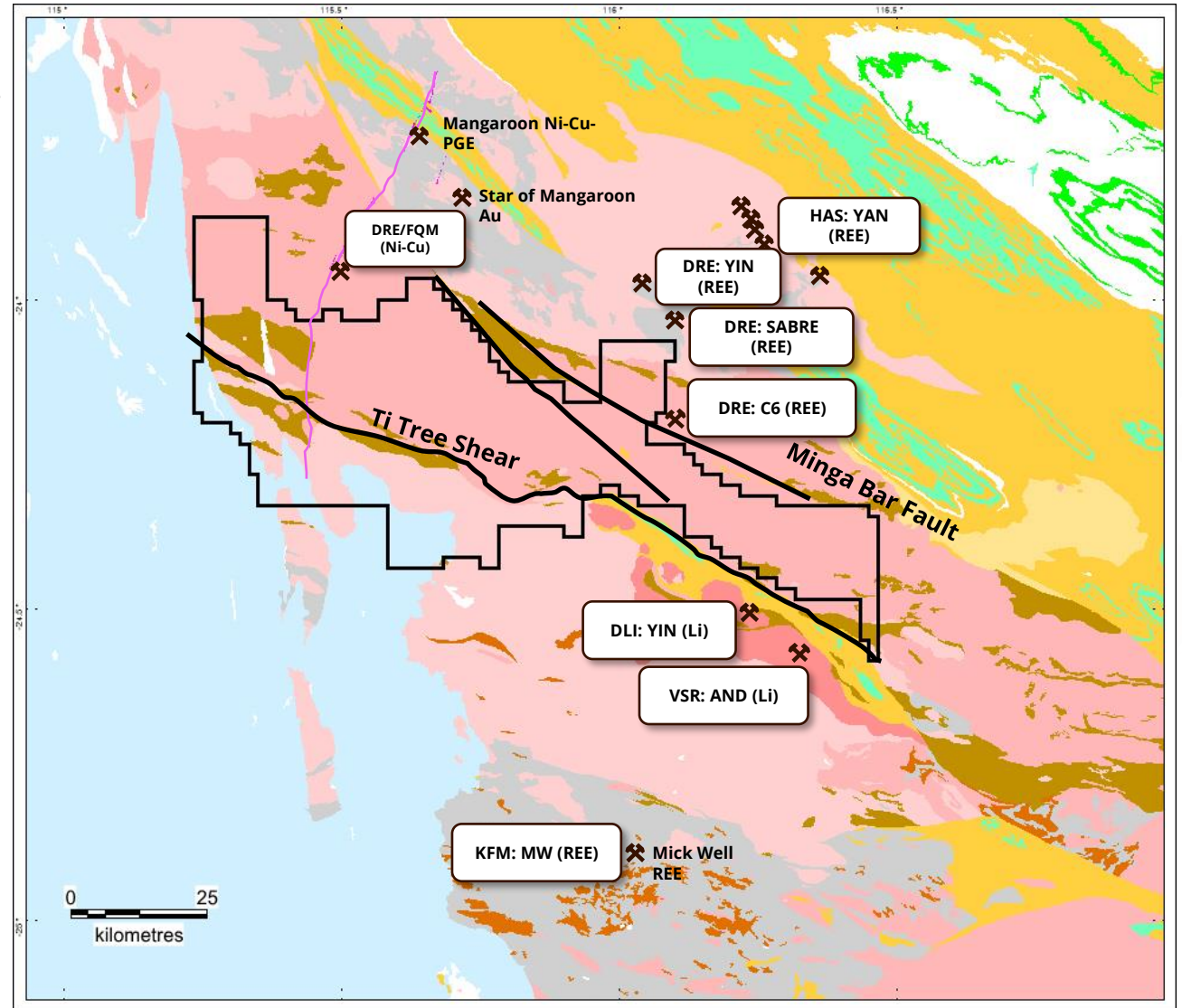
- **Same geology as neighbouring discoveries**
- Little to no modern exploration activity

## Outstanding Targets

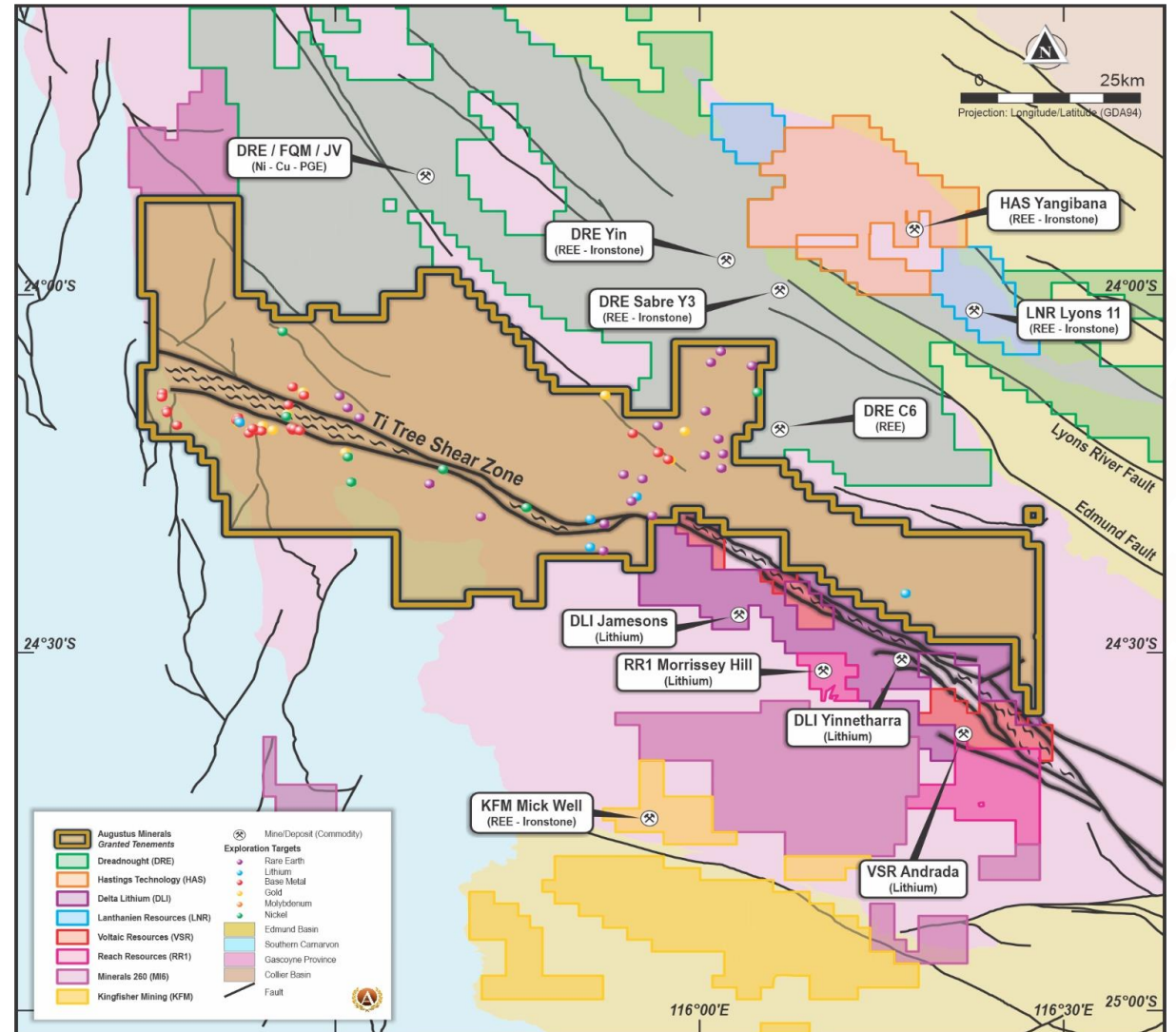
- \$5m spent on project to date
- **Numerous high quality targets generated**
- Lithium and rare earths targets ready for drilling

## Experience

- **MD & Exploration Manager with significant local knowledge exploring the Gascoyne**



- **Early mover** to the region, rapidly emerging mineral province
- **Same host rocks** as neighbouring discoveries
- **85kms** of Ti-Tree shear
- **Strong mineralisation** intersected at multiple locations across **multiple commodities**
- **> 15,000 soil samples** collected to date
- Multiple **geophysical surveys** completed
- **High priority** Li-REE-Cu targets defined



# Ti Tree Shear Project

## Dreadnought Resources

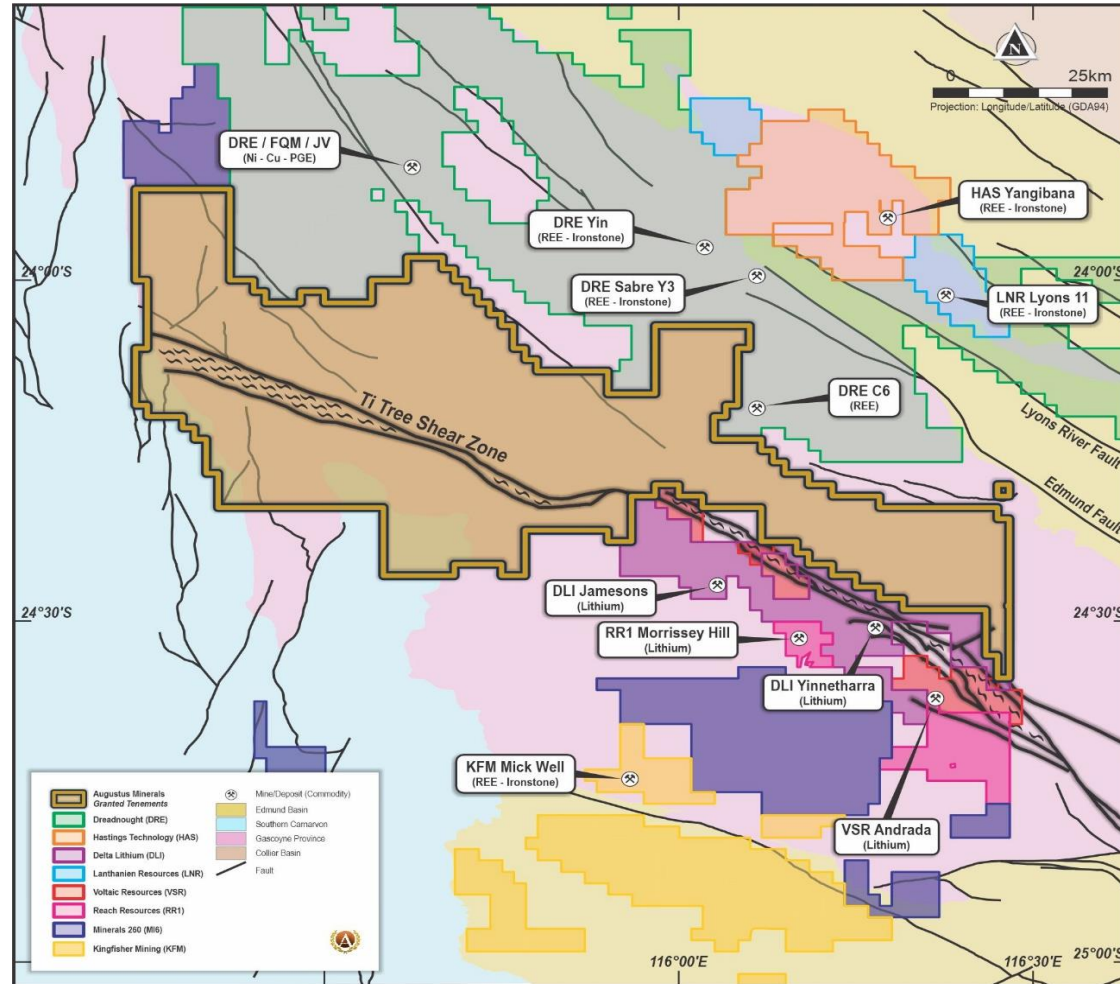
(ASX:DRE)

- Multiple Ironstone REE Discoveries
- Partly in JV with First Quantum
- **Yin REE Resources:**  
\*14.4Mt @ 1.13% TREO

## Delta Lithium

(ASX:DLT)

- Yinnetharra Lithium Discovery
- Multiple drill rigs on site
- Major drill campaign in action
- >20 new pegmatites mapped at Jameson's



## Hastings Technology

(ASX:HAS)

- Yangibana Ironstone REE Project
- **Yangibana Resource:**  
\*\*27.4Mt @ 0.97% TREO

## Lanthanin Resources

(ASX:LNR)

- Lyons Ironstone REE Project

## Voltaic Strategic Resources

(ASX:KFM)

- >300 pegmatites mapped
- Thick pegmatites intercepted in drilling

**The Gascoyne Province is the best emerging mineral discovery province in Australia**

\* ASX(DRE): 28<sup>th</sup> December 2022, INITIAL INDEPENDENT RESOURCE OVER 3KM AT YIN-MANGAROOON (100%)  
Augustus Minerals – Investor Presentation

\*\* ASX(HAS): 5<sup>th</sup> May 2021, Yangibana Project updated Measured and Indicated Mineral Resource tonnes up by 54%, TREO oxides up 32%



## 85kms of belt-scale Ti-Tree Shear hosting an endowment of critical mineral commodities

### Lithium – Pegmatites

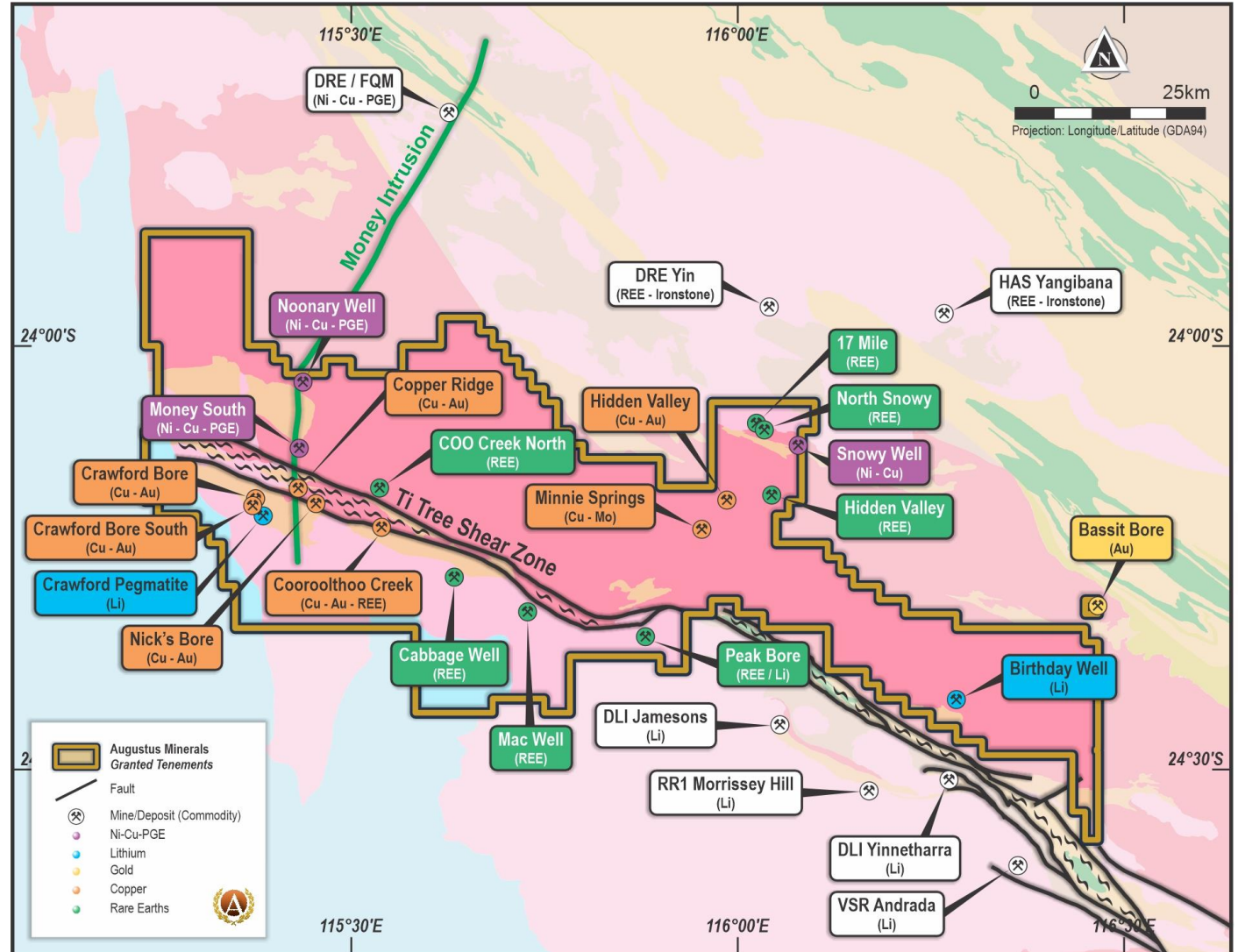
- Large, high grade Lithium bearing pegmatites are key focus

### Rare Earths - Ironstones

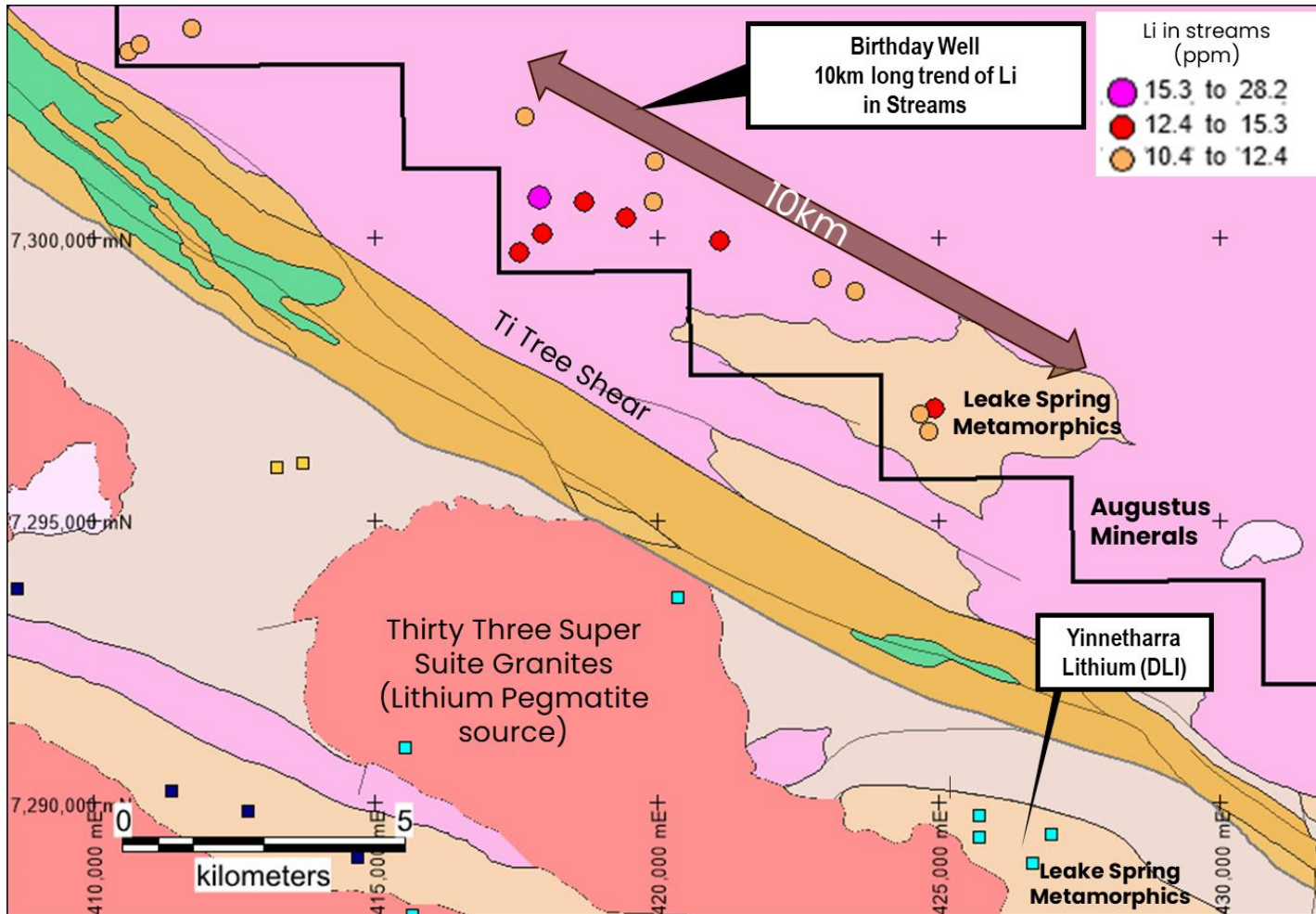
- Searching for REE rich Ironstones which are known to frequent the Gascoyne

### Copper – Porphyry/Shear Hosted

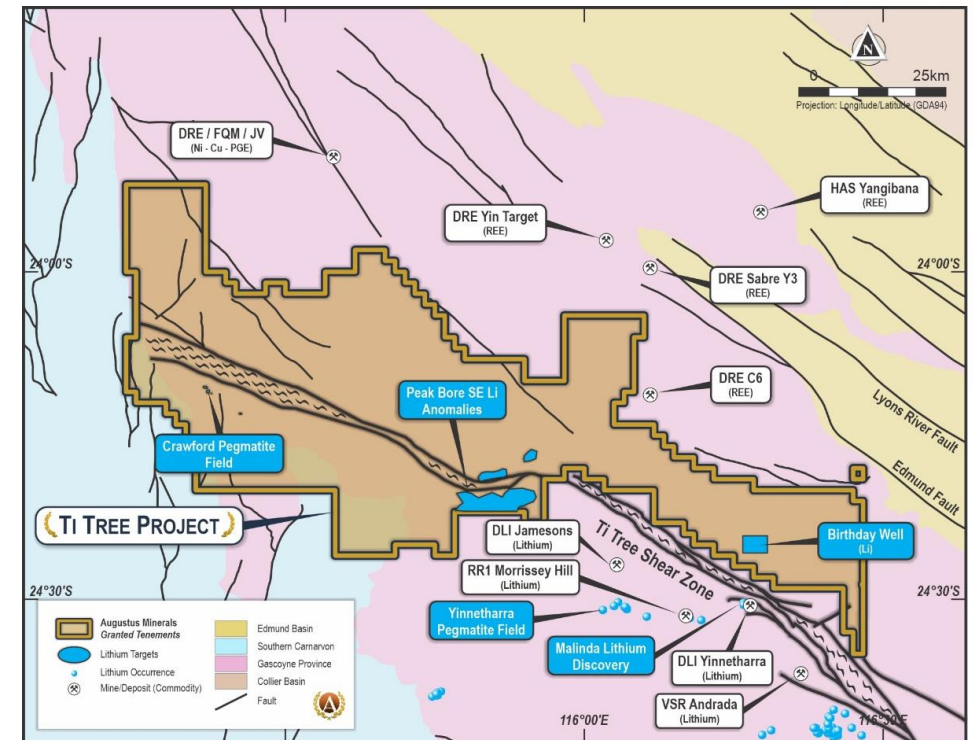
- Shear and Porphyry hosted deposit setting are our primary focus



# Lithium Pegmatites – Birthday Well

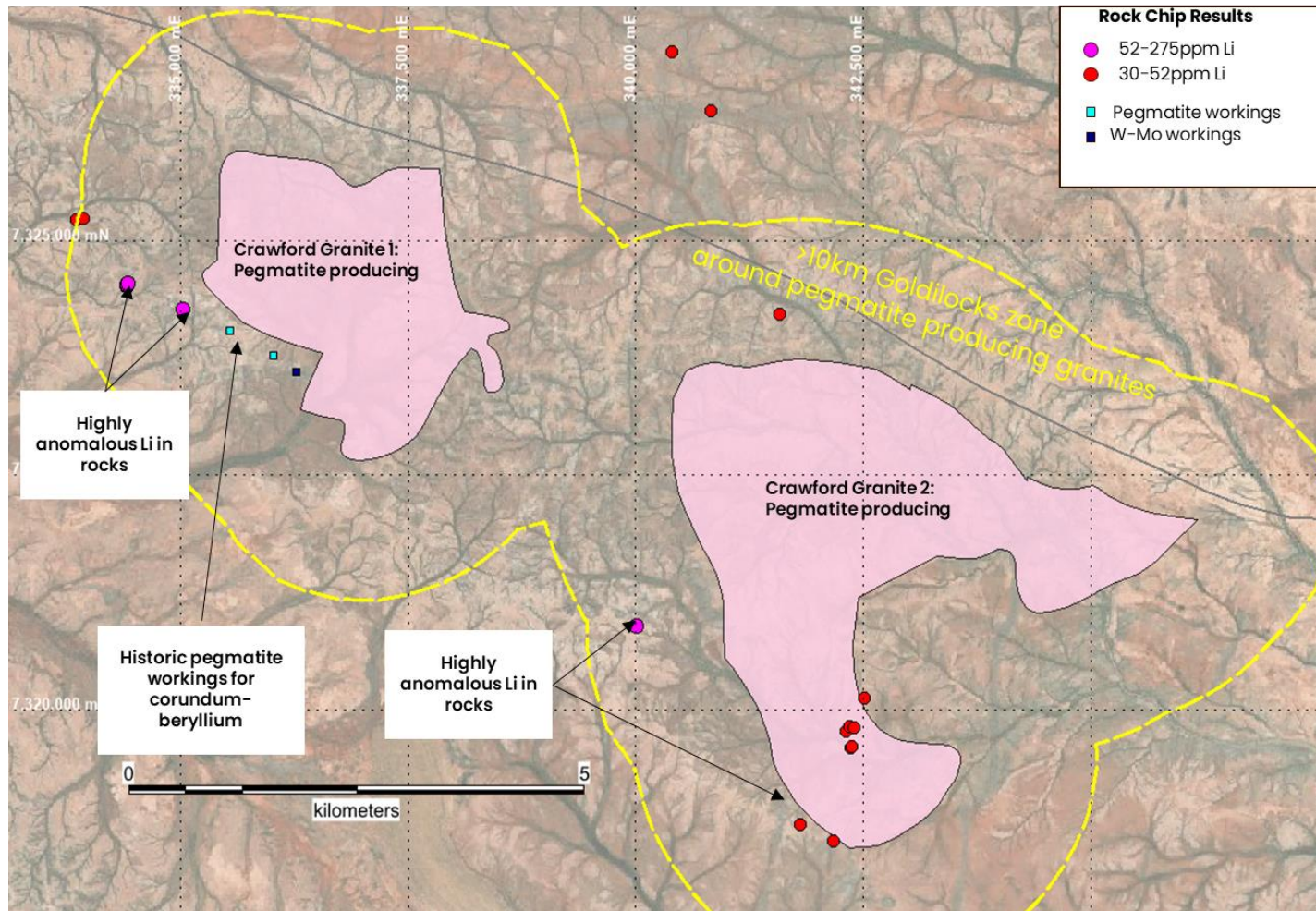


- Same geological host rock (Leak Spring Metamorphics) as Yinnetharra lithium discovery
- Elevated Li stream sediment samples over 10kms of strike length

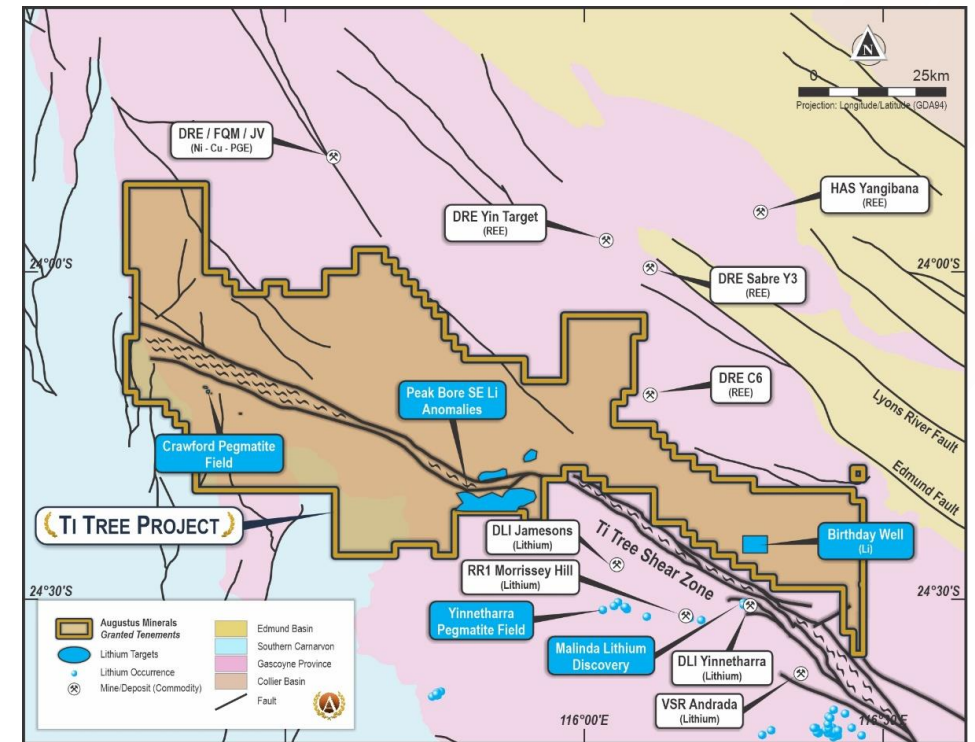


# Lithium Pegmatites – Crawford Bore

## Elevated Li in rock chips

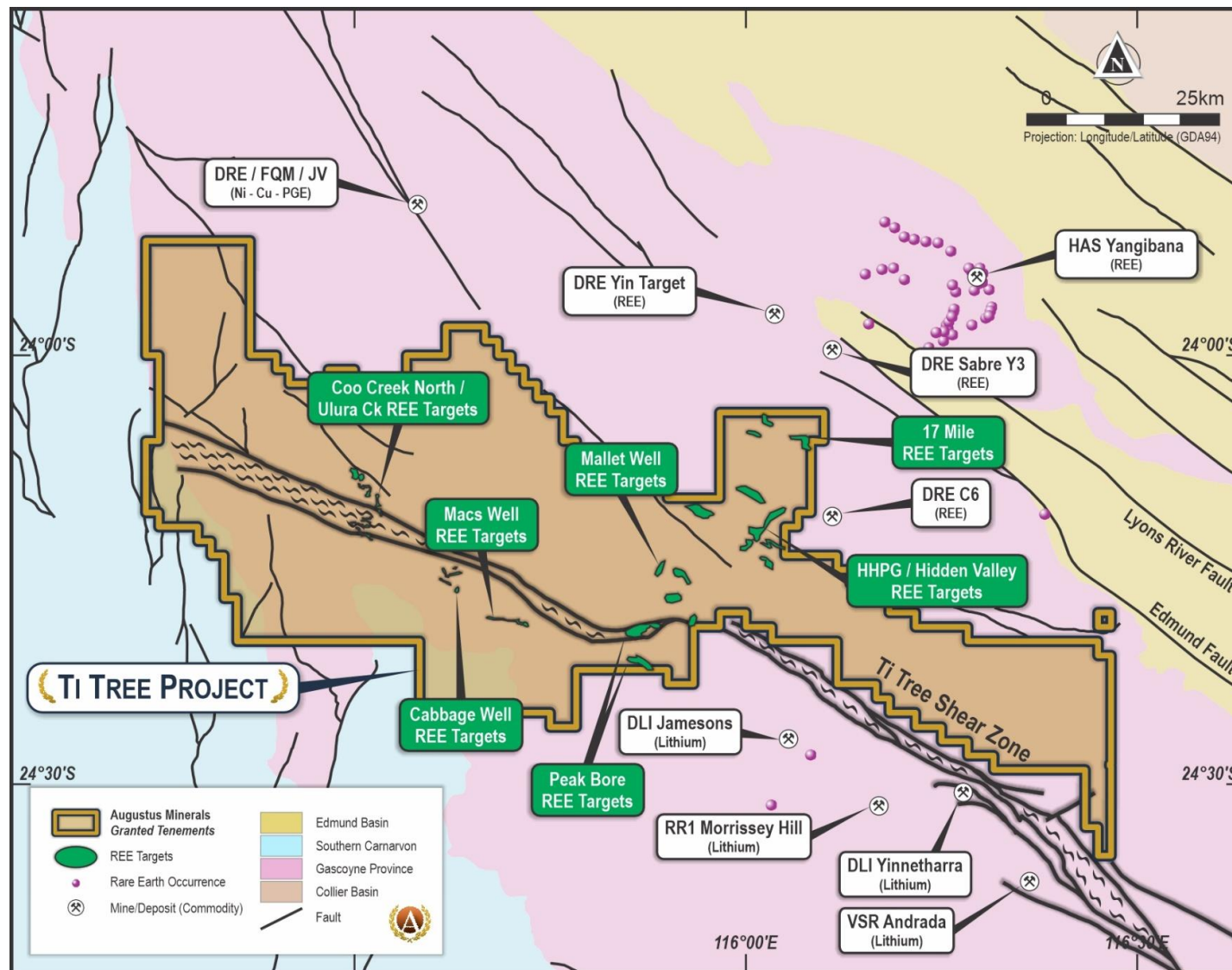


- Crawford Granites intruding Leake Spring Metamorphics – which host most of the pegmatites in the region
- Goldilocks zone to receive intensive ground truthing (mapping) in June



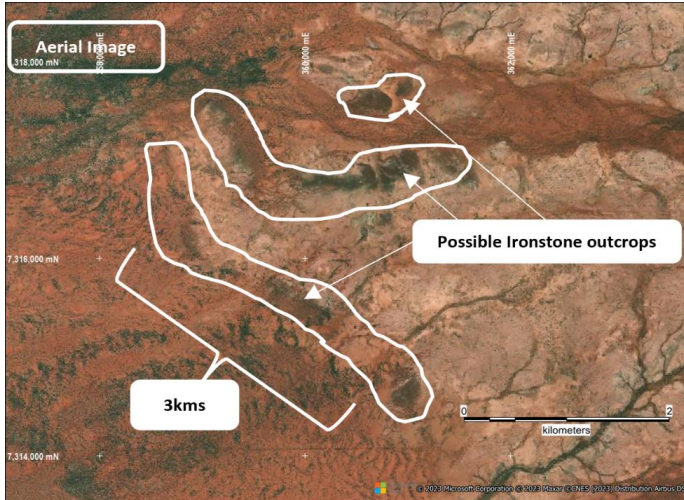
# Rare Earths – 65km of Strike & 27 Targets Defined

- **Augustus** is immediately south of **Yangibana** rare earth (REE) & **Yin** REE discoveries
- **27 Targets** with strong Thorium (Th) radiometric signatures
- **65 km** of target length (high Th or ironstone target)
- **>30Mt** of ironstone Mineral Resources already defined to the north (<sup>1</sup>DRE & <sup>2</sup>HAS)

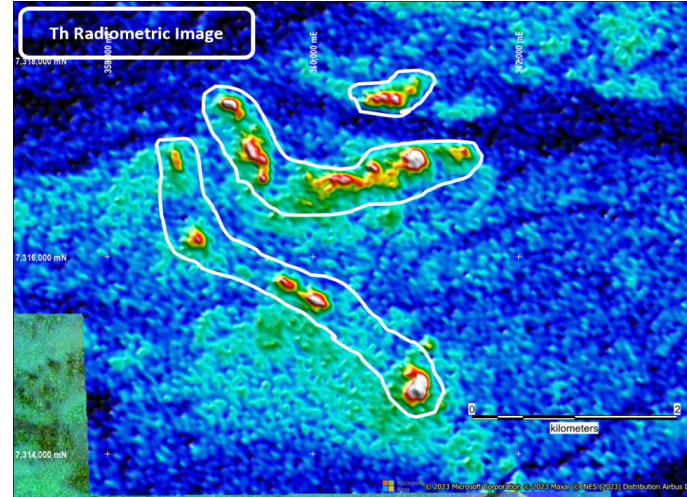


# Rare Earths - ~10kms of Potential Ironstone Strike

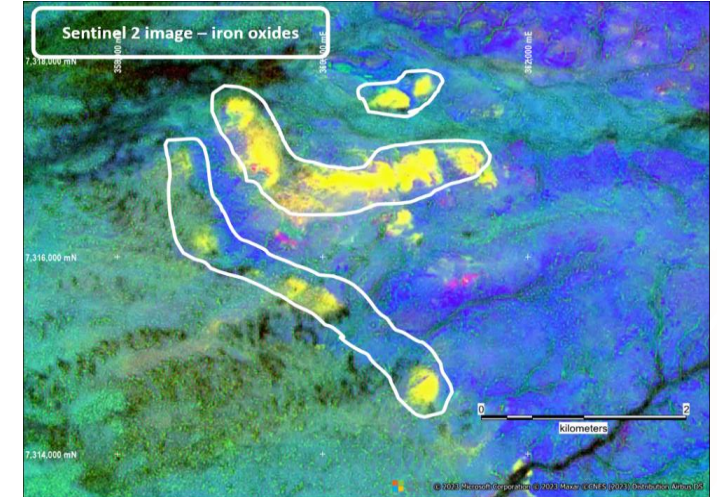
## Cabbage Tree - Ironstone



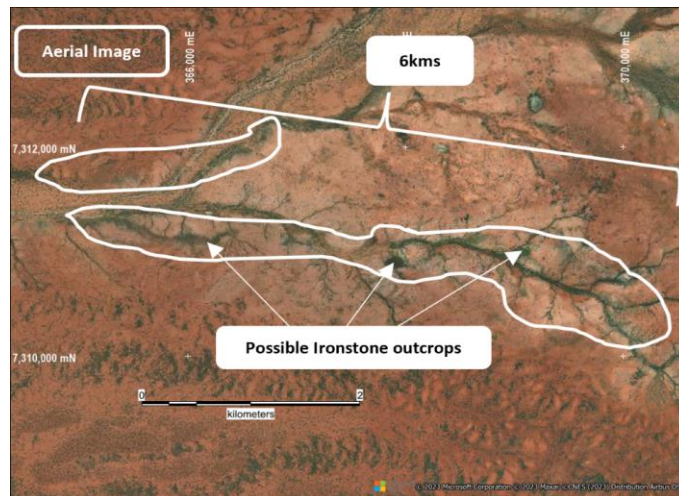
## Strong Thorium Anomalies



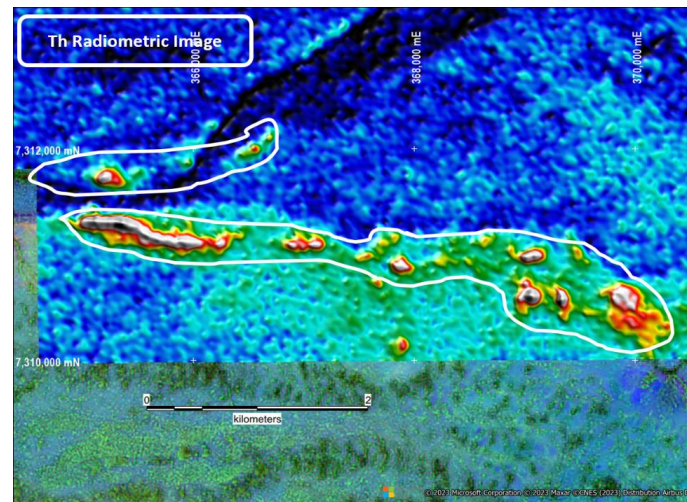
## Strong Fe Ironstone Response



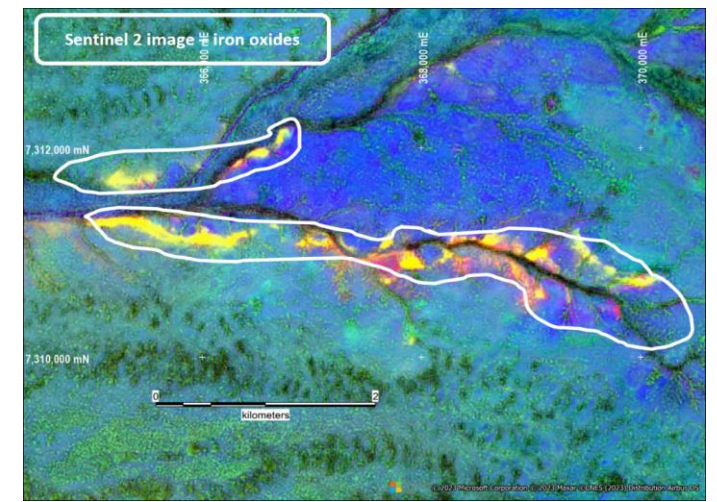
## Macs Well - Ironstone



## Strong Thorium Anomalies



## Strong Fe Ironstone Response



# Multiple Mafic Intrusions with Cu-Au Mineralisation

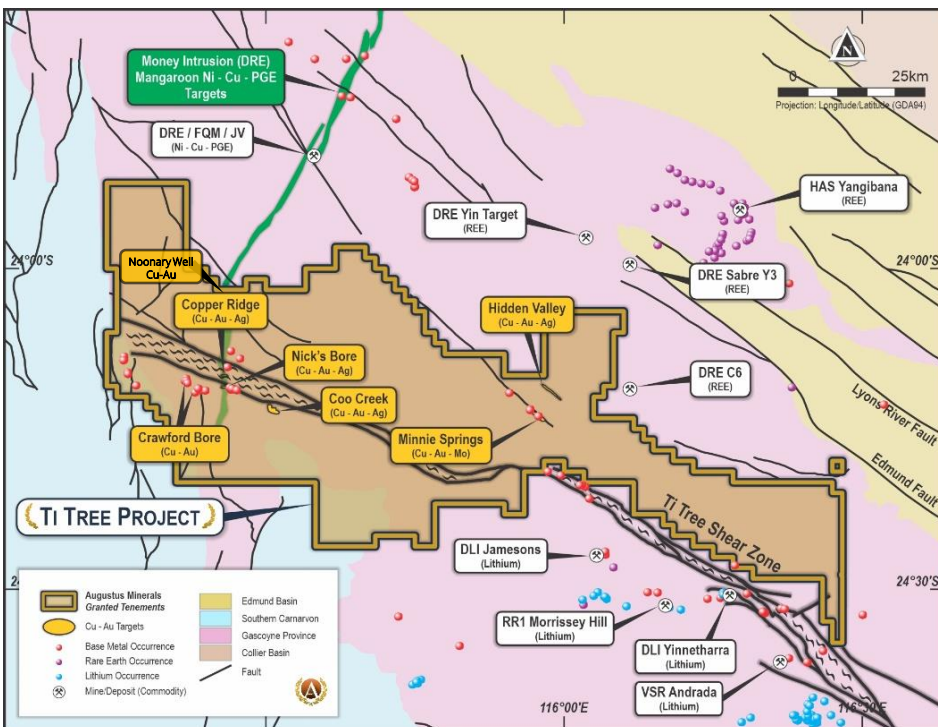
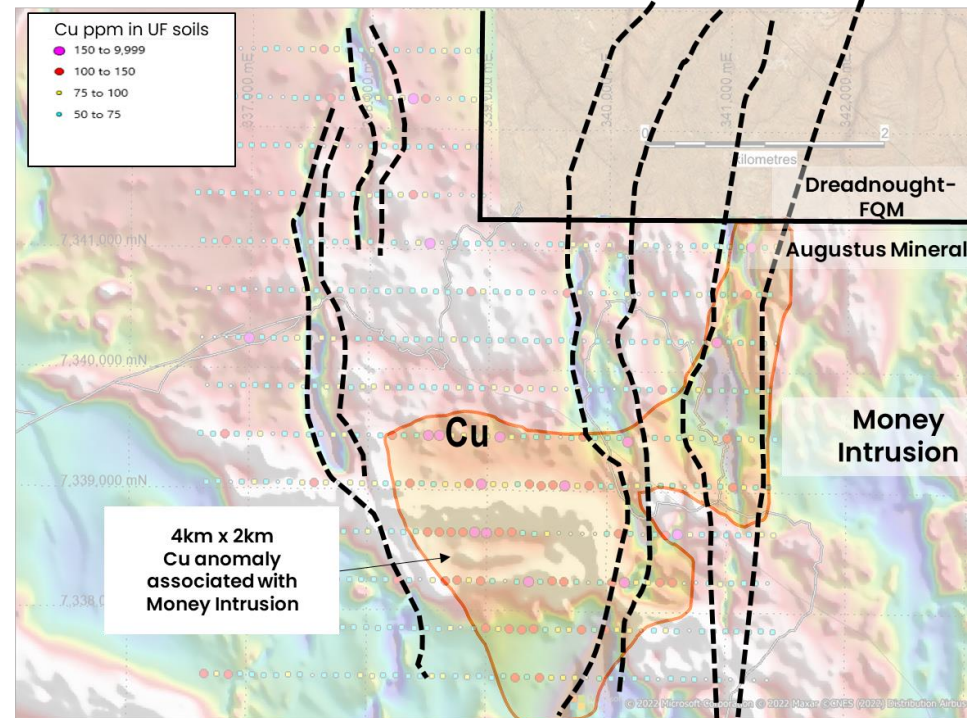
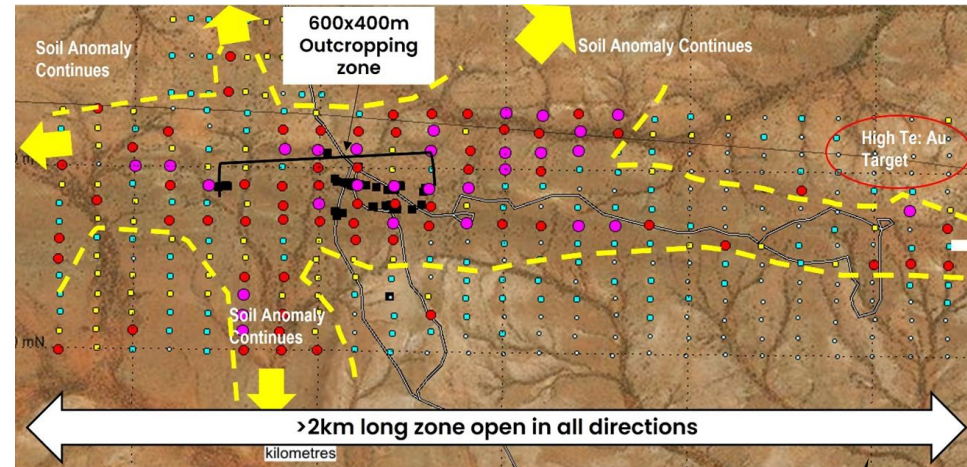
## Porphyry Related & Shear Hosted Cu-Au-Mo

### Copper Ridge

- 600m long copper outcrop
- 2km long copper anomaly
- Intersection of Ti-Tree shear and Money Intrusion
- Multiple fracture zones

### Noonary Well

- 4 x 2km long copper anomaly
- High sulphide content in rock chips
- Southern extension of DRE/FQM Ni-Cu mineralisation



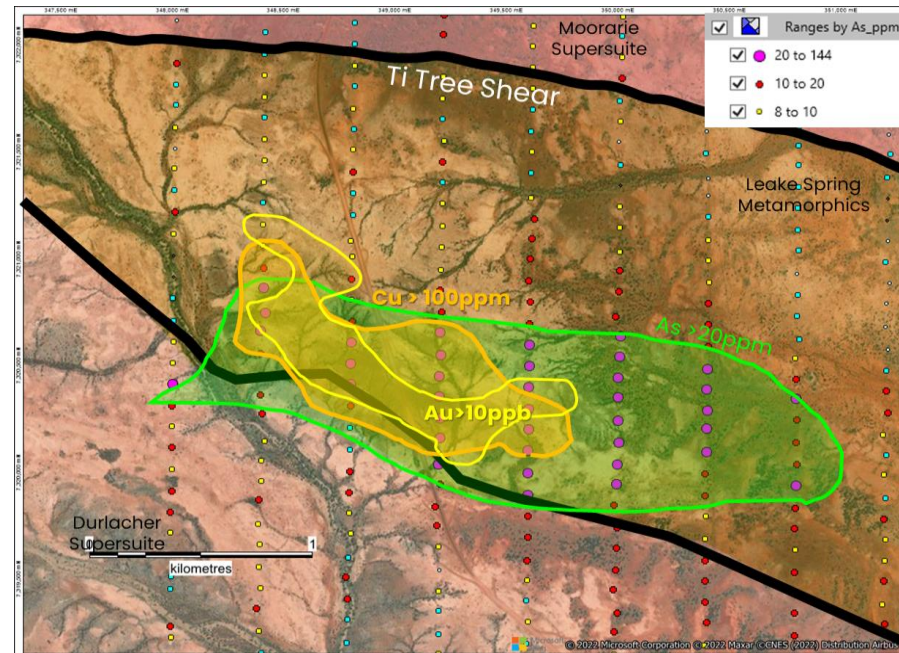
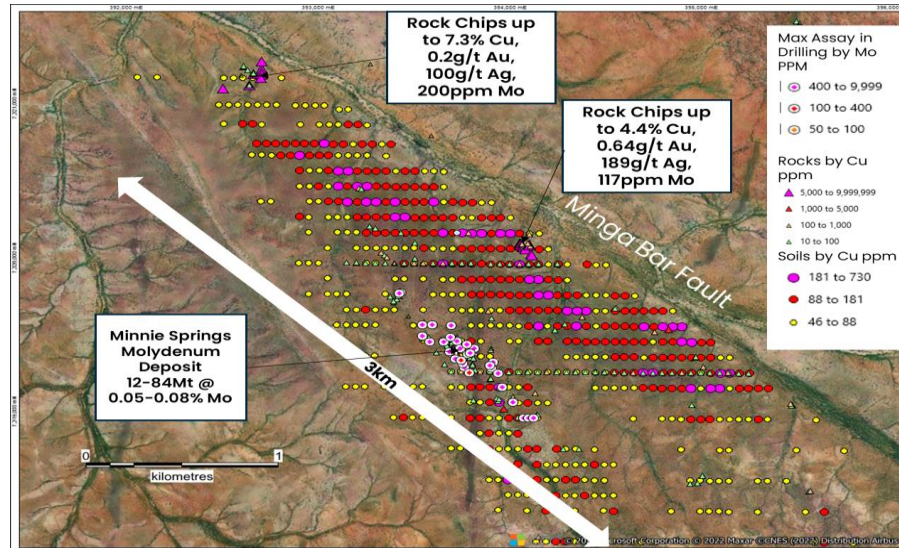
## Copper Drill Ready Targets

# Multiple Mafic Intrusions with Cu-Au Mineralisation

## Porphyry Related & Shear Hosted Cu-Au-Mo

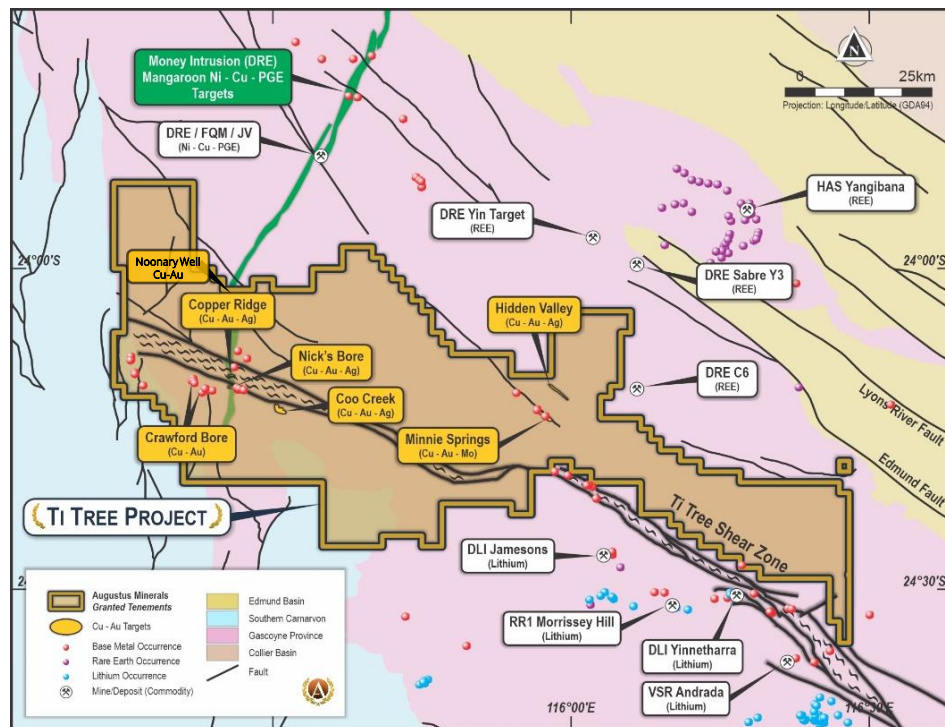
### Minnie Springs

- 13km long copper anomaly – porphyry host
- Copper in rock chips up to 7% Cu
- Directly adjacent to historic Minnie Springs Molybdenum deposit
- Lies adjacent to the Minga Bar Fault



### Coo Creek

- 2km long copper anomaly
- Leak Spring Metamorphic host
- No drilling completed to date

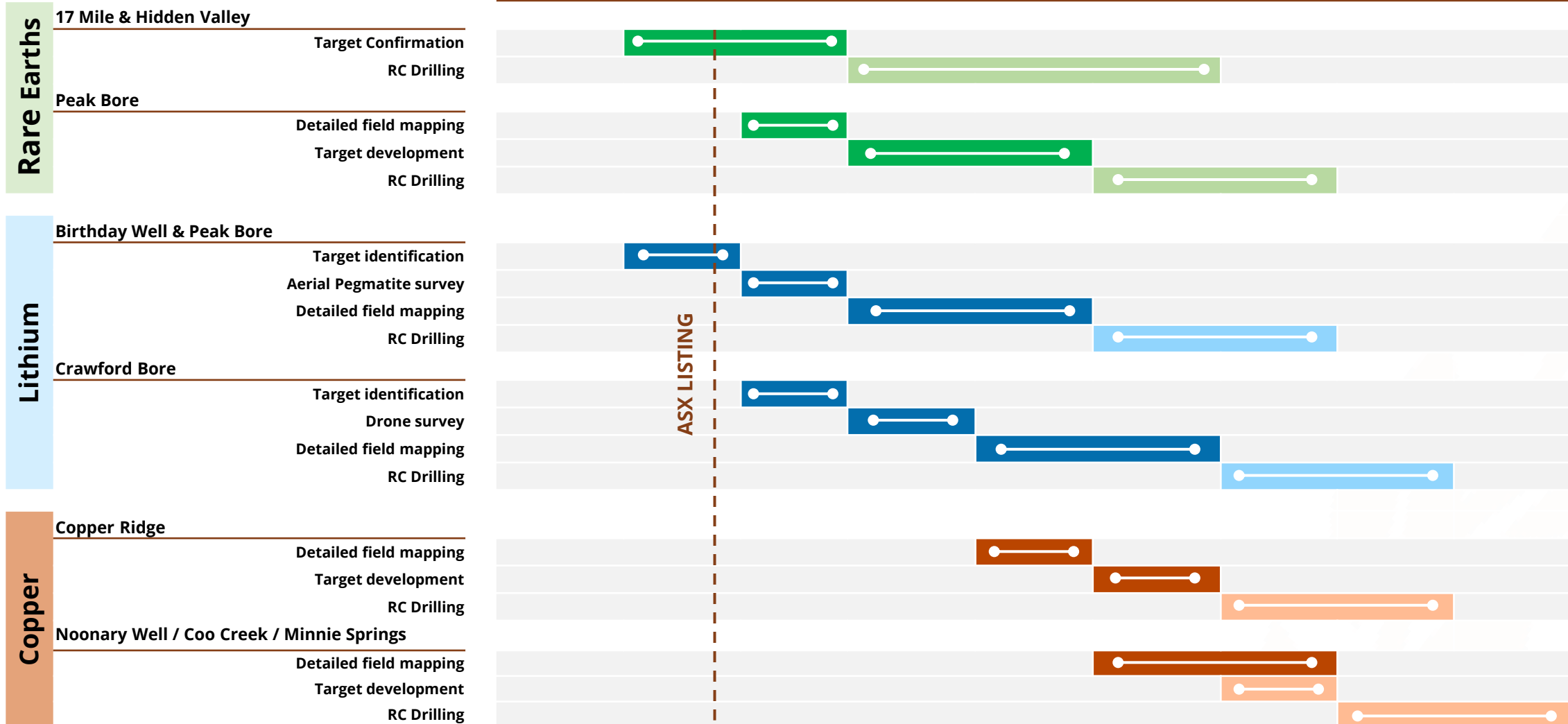


## Copper Drill Ready Targets

# 2023 Exploration Program - Multi Commodity Strategy



## Priority targets



\*RC Drilling post completion of Aboriginal Heritage survey



# Key Takeaways

<b>Ground</b>	<b>Dominant Gascoyne Land Holding</b> in a highly prospective terrane
<b>Li / REE / Cu</b>	<b>Multiple Commodity prospects</b> with key Critical Minerals (Rare Earth, Lithium, Copper) opportunities
<b>Gascoyne</b>	<b>Centred in one of the hottest emerging terranes</b> with multiple recent Lithium and Rare Earth discoveries
<b>Targets</b>	<b>Multiple (&gt;50) priority 1 targets already generated</b> - \$5m and 5 years of work prior to going public
<b>Opportunity</b>	<b>Significant potential</b> for multi commodity discovery
<b>Size</b>	<b>Secure tenement holding</b> - 3,600km <sup>2</sup> - 100% owned
<b>Team</b>	<b>Quality Management</b> with substantial local Gascoyne experience



**AUGUSTUS  
MINERALS**  
LIMITED

**Thank you**

---

**Andrew Reid  
Managing Director**

**ASX: AUG**

[www.augustusminerals.com.au](http://www.augustusminerals.com.au)

**Lithium – Rare Earths - Copper  
Critical Minerals**

**Ti Tree Shear Project  
Gascoyne Region, WA**