



**AUGUSTUS  
MINERALS  
LIMITED**

# CORPORATE PRESENTATION

---

- **MUSIC WELL GOLD PROJECT (WA)**
- **TI-TREE PROJECT (WA)**
- **MT KARE GOLD PROJECT (PNG)**
- **VANAPA RIVER (PNG)**



# STATEMENTS & DISCLAIMERS



These presentation materials and any accompanying verbal presentation (together, the Presentation Materials) have been prepared by Augustus Minerals Limited (Company) as at 30 April 2026 and statements are current only as at that date. Information in the Presentation Materials remains subject to change without notice. The Company has no responsibility or obligation to inform you of any matter arising or coming to its notice, after the date of this document, which may affect any matter referred to in this document. By receiving the Presentation Materials, you acknowledge and represent to the Company that you have read, understood and accepted the terms of this disclaimer. It is the responsibility of all recipients of these Presentation Materials to obtain all necessary approvals to receive these Presentation Materials and receipt of the Presentation Materials will be taken by the Company to constitute a representation and warranty that all relevant approvals have been obtained.

## NOT AN OFFER

These Presentation Materials are for information purposes only. The Presentation Materials do not comprise a prospectus, product disclosure statement or other offering document under Australian law (and will not be lodged with the Australian Securities and Investments Commission) or any other law. The Presentation Materials also do not constitute or form part of any invitation, offer for sale or subscription or any solicitation for any offer to buy or subscribe for any securities nor shall they or any part of them form the basis of or be relied upon in connection therewith or act as any inducement to enter into any contract or commitment with respect to securities. In particular, these Presentation Materials do not constitute an offer to sell or a solicitation to buy, securities in the United States of America.

## NOT INVESTMENT ADVICE

The Presentation Materials are not investment or financial product advice (nor tax, accounting or legal advice) and are not intended to be used for the basis of making an investment decision. Recipients should obtain their own advice before making any investment decision.

## SUMMARY INFORMATION

The Presentation Materials do not purport to be all inclusive or to contain all information about the Company or any of the assets, current or future, of the Company. The Presentation Materials contain summary information about the Company and its activities which is current as at the date of the Presentation Materials. The information in the Presentation Materials is of a general nature and does not purport to contain all the information which a prospective investor may require in evaluating a possible investment in the Company or that would be required in a prospectus or product disclosure statement or other offering document prepared in accordance with the requirements of Australian law or the laws of any other jurisdiction, including the United States of America.

While reasonable care has been taken in relation to the preparation of the Presentation Materials, none of the Company or its directors, officers, employees, contractors, agents, or advisers nor any other person (Limited Party) guarantees or makes any representations or warranties, express or implied, as to or takes responsibility for, the accuracy, reliability, completeness or fairness of the information, opinions, forecasts, reports, estimates and conclusions contained in this document. No Limited Party represents or warrants that this document is complete or that it contains all information about the Company that a prospective investor or purchaser may require in evaluating a possible investment in the Company or acquisition of shares in the Company. To the maximum extent permitted by law, each Limited Party expressly disclaims any and all liability, including, without limitation, any liability arising out of fault or negligence, for any loss arising from the use of or reliance on information contained in this document including representations or warranties or in relation to the accuracy or completeness of the information, statements, opinions, forecasts, reports or other matters, express or implied, contained in, arising out of or derived from, or for omissions from, this document including, without limitation, any financial information, any estimates or projections and any other financial information derived therefrom.

## JORC CODE

The information in the Presentation Materials relating to exploration results, exploration targets, mineral resources and ore reserves has been reported by the Company in accordance with the 2012 Edition of the 'Australasian Code for Reporting of Exploration results, Mineral Resources and Ore Reserves' (JORC Code) previously (refer to the Company's prospectus available on the Company website at <http://augustusminerals.com.au/>) and listed at the back of this report. The Company confirms that it is not aware of any new information as at the date of the Presentation Materials that materially affects the information included in the Presentation Materials and that all material assumptions and technical parameters underpinning the estimates in the Company's prospectus continue to apply and have not materially changed.

## COMPETENT PERSON STATEMENT

The information in this announcement is based on and fairly represents information compiled by Mr Andrew Ford. Mr Ford is employed as the GM Exploration and is a member of the Australasian Institute of Mining and Metallurgy. He has sufficient experience of relevance to the styles of mineralisation and types of deposits under consideration and to the activities undertaken to qualify as a Competent Person as defined in the 2012 Edition of the Joint Ore Reserves Committee (JORC) Australasian Code for Reporting of Exploration Results, Mineral Resources and Ore Reserves. He consents to the inclusion in this announcement of the matters based on information in the form and context in which they appear.

## FORWARD LOOKING STATEMENTS

This announcement may contain certain forward-looking statements and projections. Such forward looking statements/projections are estimates for discussion purposes only and should not be relied upon. Forward looking statements/projections are inherently uncertain and may therefore differ materially from results ultimately achieved. Augustus Minerals Limited does not make any representations and provides no warranties concerning the accuracy of the projections and disclaims any obligation to update or revise any forward-looking statements/projects based on new information, future events or otherwise except to the extent required by applicable laws. While the information contained in this report has been prepared in good faith, neither Augustus Minerals Limited or any of its directors, officers, agents, employees or advisors give any representation or warranty, express or implied, as to the fairness, accuracy, completeness or correctness of the information, opinions and conclusions contained in this announcement.

# CORPORATE OVERVIEW



## BOARD & MANAGEMENT



**Brian Rodan**  
Chairman



**Andrew Ford**  
GM Exploration



**Richard Jordinson**  
Non-Executive Director



**Graeme Smith**  
Non-Executive Director



**Stuart Urquhart**  
Country Manager - PNG

## CAPITAL STRUCTURE

**206.4M**

Shares Outstanding

**A\$0.042**

Share Price

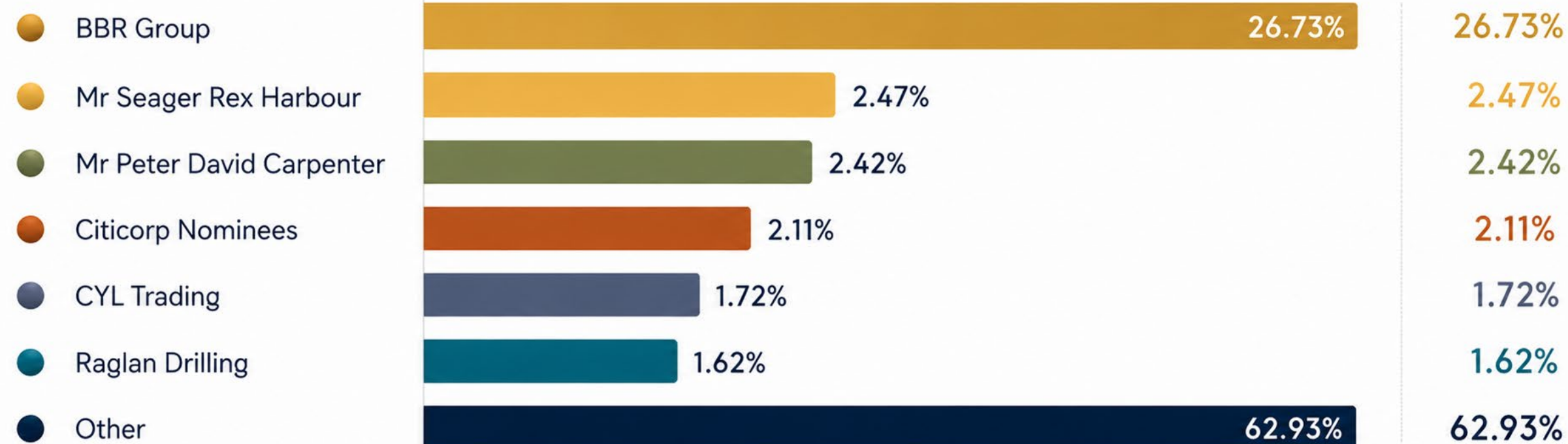
**63.9M**

Options Outstanding

**A\$9.32M**

Market Capitalization

## MAJOR SHAREHOLDERS



*As at latest available reporting date.*



**AUGUSTUS  
MINERALS  
LIMITED**

# PROJECTS – WA & PNG





**AUGUSTUS  
MINERALS  
LIMITED**

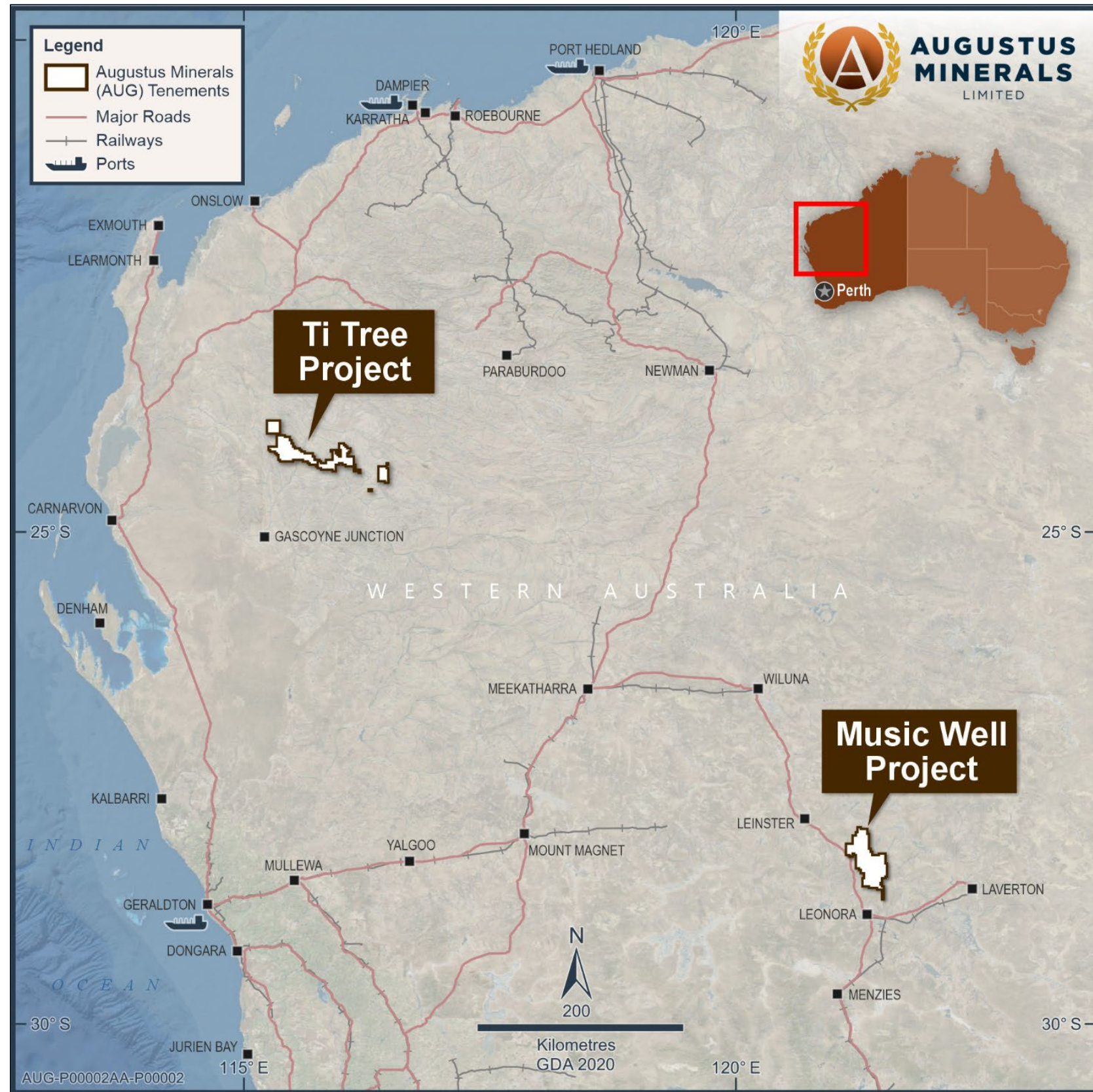
# WESTERN AUSTRALIA

---

- **MUSIC WELL GOLD PROJECT - Leonora**
- **TI-TREE PROJECT – Gascoyne**



# STRONG GOLD FOCUS



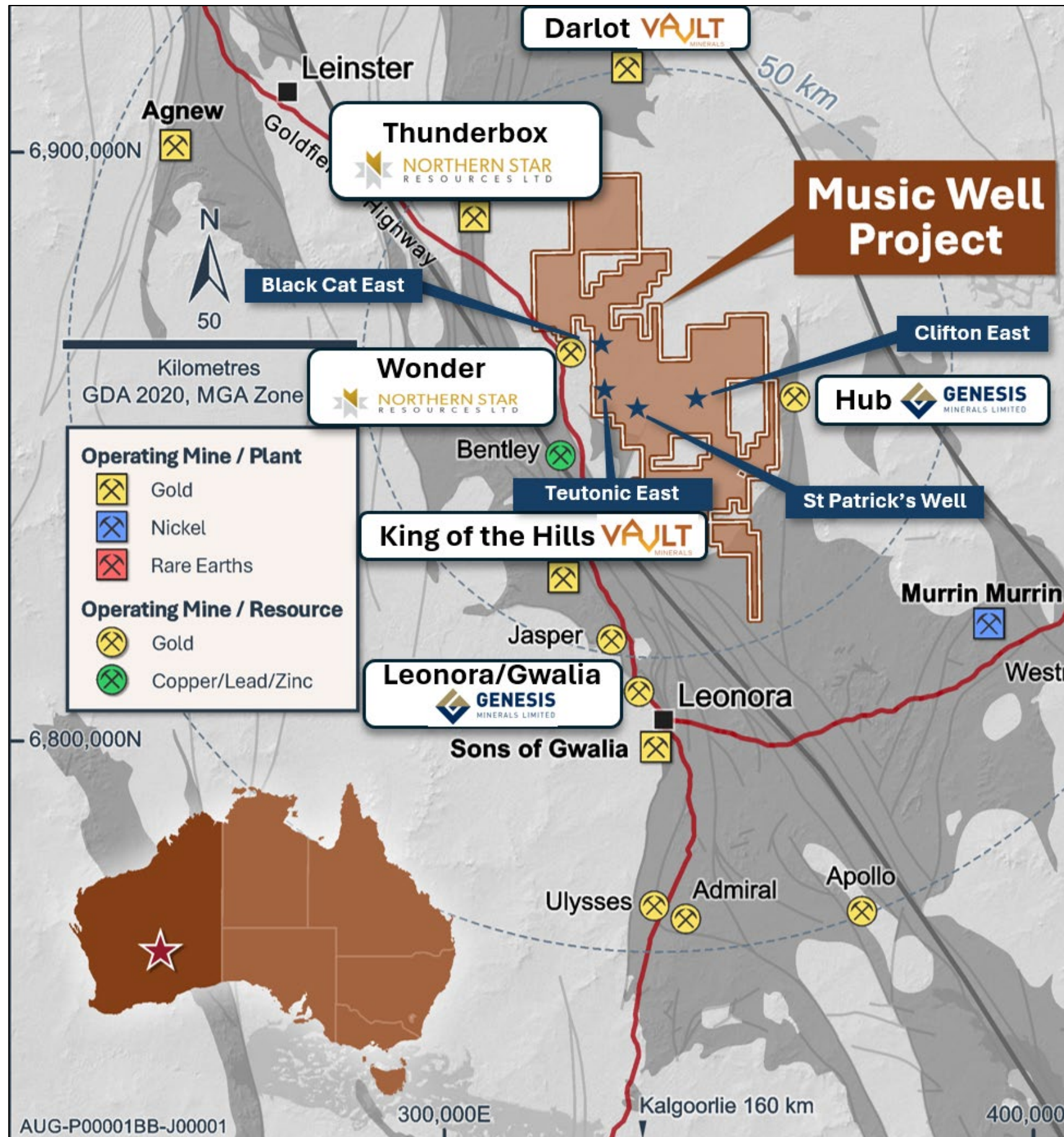
## Music Well Gold Project – Acquired November 2024

- 1,242km<sup>2</sup> of tenure 35km north of Leonora in the Northeastern Goldfields of WA.
- Four gold mills within 40km
- Kilometre-scale prospects with outcropping gold and wide intersections in maiden drilling

## Ti-Tree Shear Project

- 1,300km<sup>2</sup> of tenure including 85kms of belt-scale Ti-Tree Shear.
- Cu-Ni-PGE Potential on Money Intrusion adjoining **DRE-TECK JV**.
- Copper – molybdenum porphyry style mineralisation at Minnie Springs.

# MUSIC WELL: PROJECT HIGHLIGHTS



## Location

Located in the Yilgarn Craton in WA – 35km north of Leonora & 45km south of Leinster.

The EGST has produced **130Moz** of gold & contains **17 world class gold deposits**.



## Neighbours

Surrounded by several significant operating mines including:

- Wonder Underground (ASX:NST) (3km)
- Darlot Gold Mine (ASX:VAU) (12km)
- King of the Hills (ASX:VAU) (13km)
- Thunderbox (ASX:NST) (10km)
- Hub (ASX:GMD) (3km)



## Geology

Primary mineralisation styles on **1,242km<sup>2</sup>** tenements:

- Granitoid hosted shear zone gold mineralisation
- Intrusion related gold mineralisation

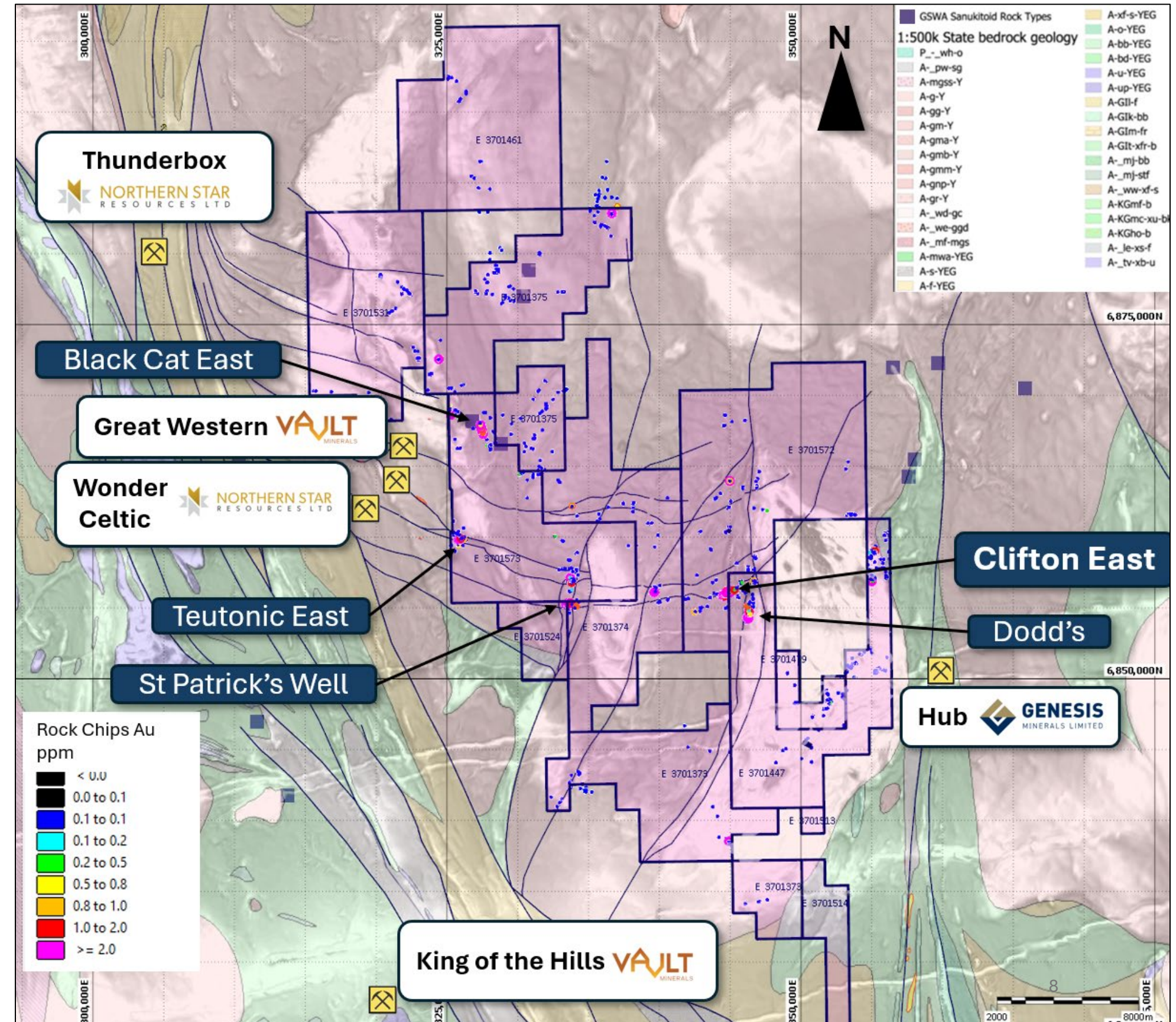


## 5 Key Gold Targets

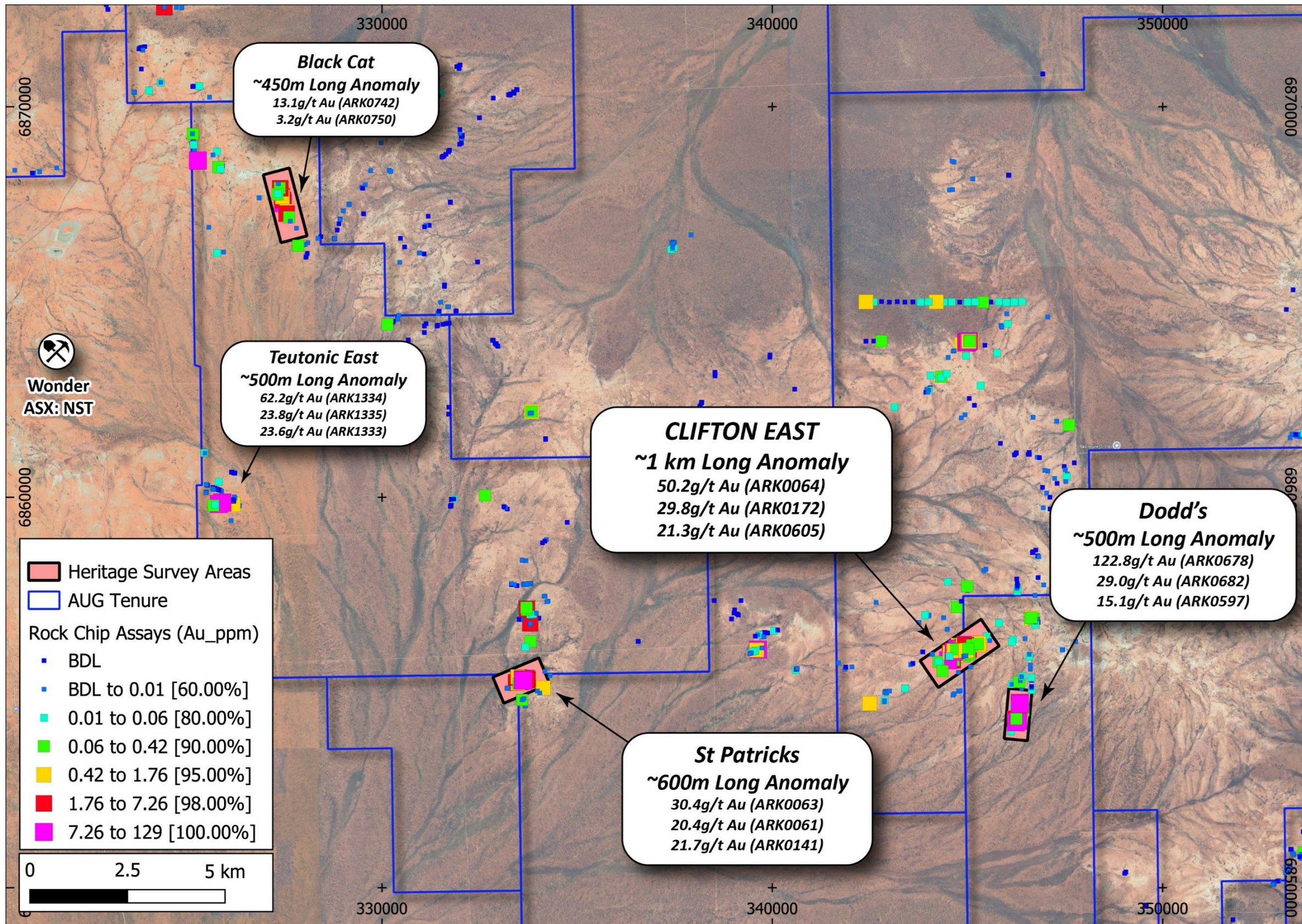
- Clifton East
- St Patricks Well
- Black Cat East
- Teutonic East
- Dodd's

# MUSIC WELL: GRANITE HOSTED

- Mafic type “**Sanukitoids**” spatially associated with the distribution of gold mineralization → **mantle derived fluids**.
- Multiple episodes of granitoid intrusion → targeting **youngest and most evolved** granitoids.
- More complexity at prospect scale; with granodiorite (host to **Wonder, King of the Hills**) as well as dolerite and lamprophyre dykes → deep, penetrating structures.
- Very **limited historic exploration** → significant progress by AUG to identify five priority targets.



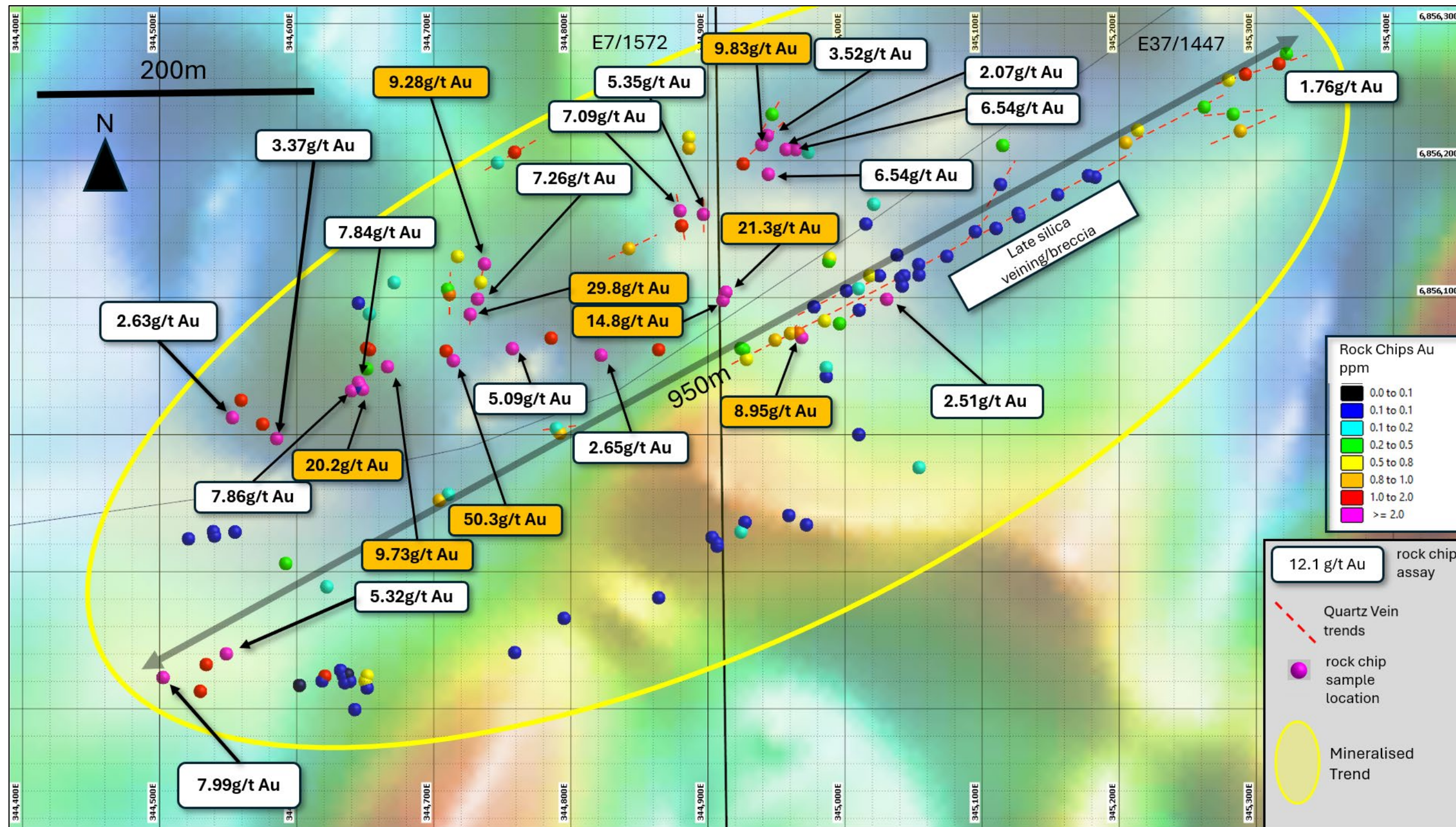
# MUSIC WELL: KEY PROSPECTS



## Multiple Gold Bearing Veins Discovered

- Multiple, high-grade, **outcropping vein zones** identified from rock chip sampling
- Exceptional success rate identifying **new** high-grade areas
- Five **outcropping targets**
- **>70%** of Project area **is under** a thin veneer of transported **cover**
- **Soil sampling** programs to extend Black Cat East and Teutonic East prospects
- Further soil/auger sampling to test areas **along strike** along major **structures**

# MUSIC WELL: CLIFTON EAST

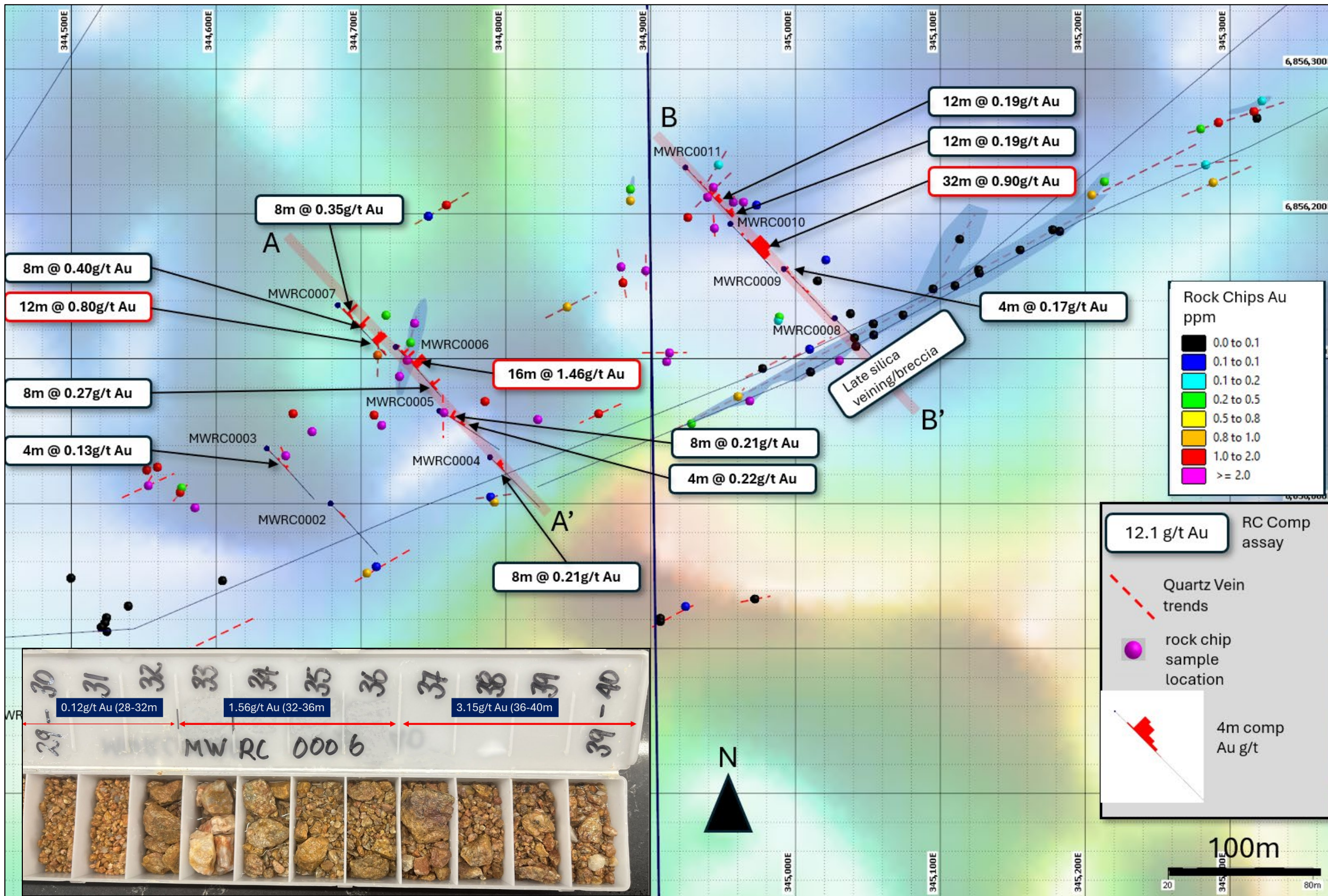


- The Clifton East anomaly is situated along a major NE trending structural Zone.
- High-grade gold in **rock chips** and **eluvial nugget** patches.
- **Stage 1 drilling to test Clifton East completed.**
- **Follow-up drilling planned** for Clifton East, and first drilling at St Patrick's Well and Black Cat East prospects.

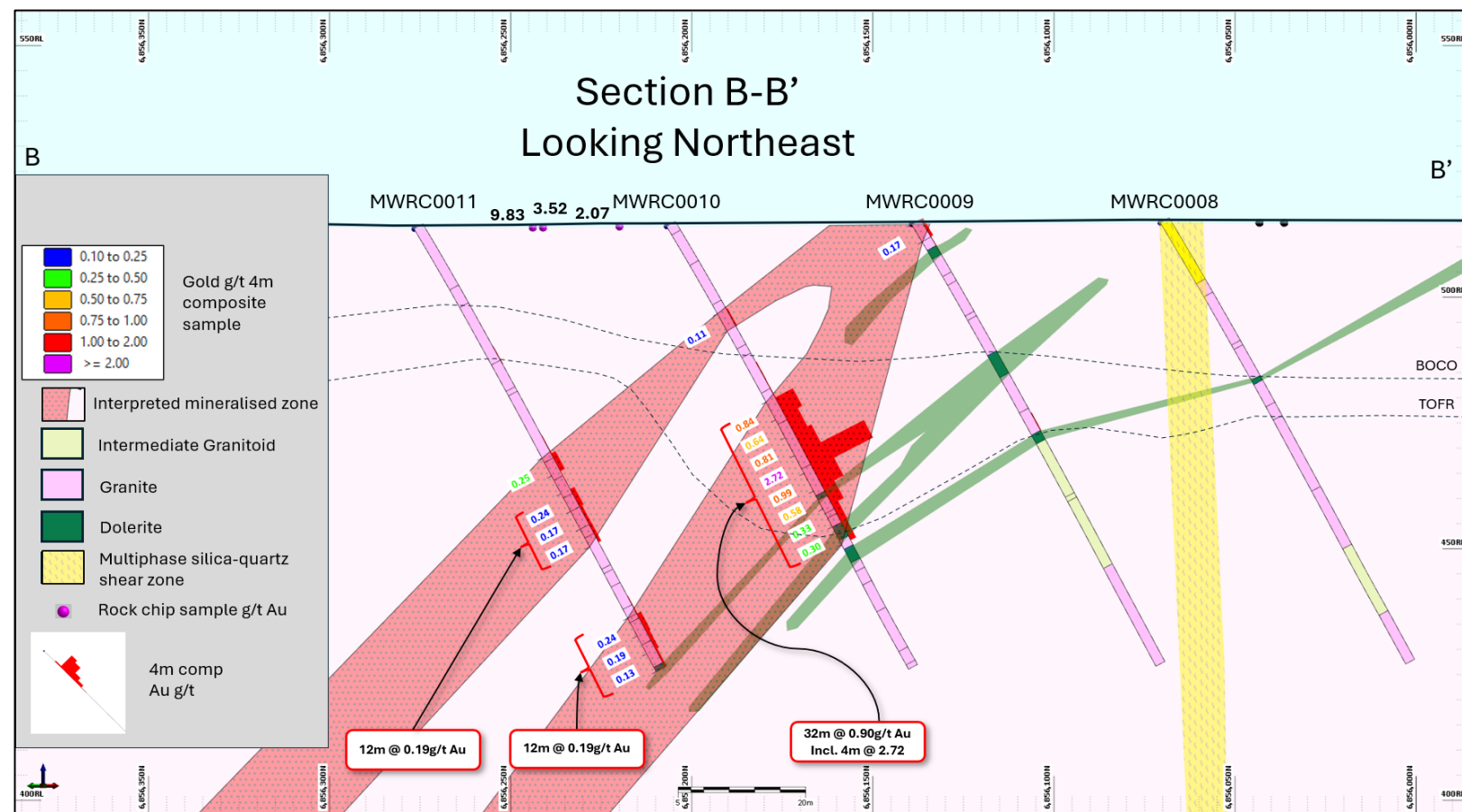
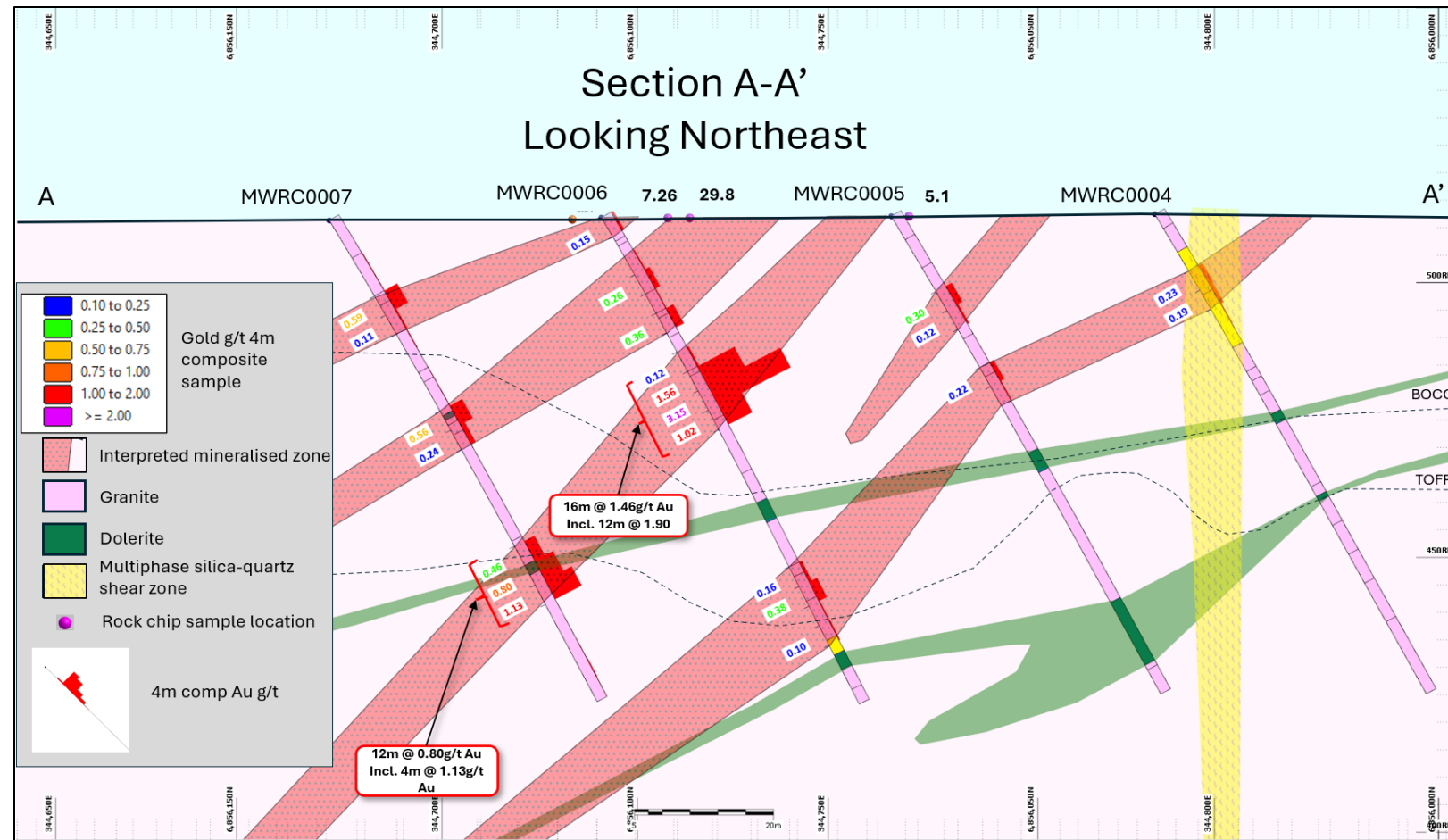
# MUSIC WELL: CLIFTON EAST DRILL TESTING

RC results include (4m composite samples):

- **16m at 1.46g/t gold** from 28m in MWRC0006 (incl. 12m at 1.91g/t gold)
- **12m at 0.80g/t gold** from 68m in MWRC0007 (incl. 4m at 1.13g/t gold)
- **32m at 0.90g/t gold** from 40m in MWRC0010 (incl. 4m at 2.72g/t gold)
- The **drilling only covered 350m of the 1.2km strike** of the main trend defined by soils and rock chips.



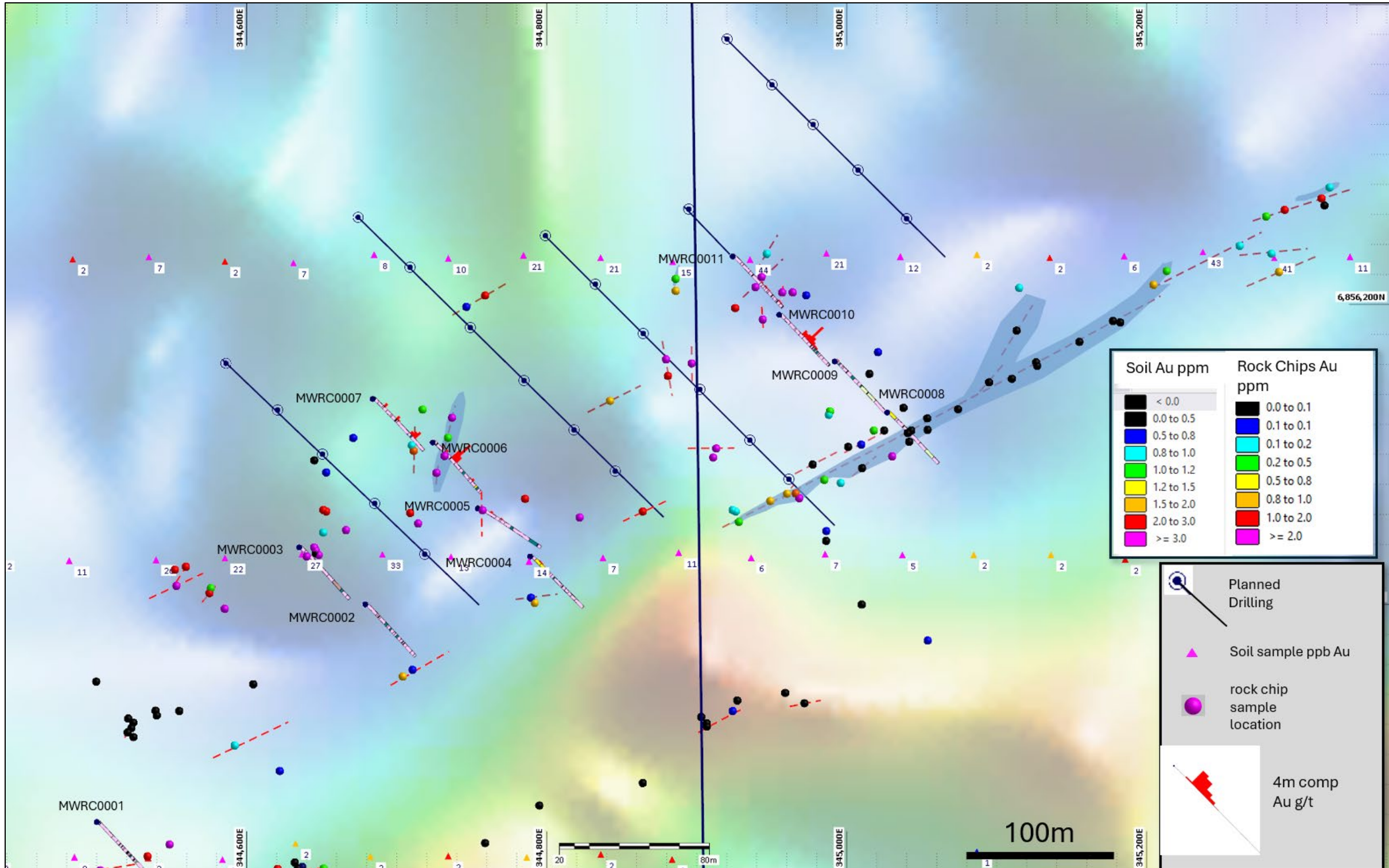
# MUSIC WELL: CLIFTON EAST



**Clifton East shear/fault zone is a major deep penetrating long active structure.**

- Dominant rock was pink to red coloured biotite granite grading to quartz syenite.
- Common thin **dolerite and lesser lamprophyre dykes** were intersected. **Lamprophyre dykes are indicative of deep tapping faults and gold fertile mantle sources.**
- Complexity in the geology supports the interpretation of the northeast trending **Clifton East shear/fault zone being a major, deep penetrating long active structure.**
- **Strong similarities with the Gold Cities group of deposits (1.4Moz Au)<sup>i,ii</sup>**, one of the largest granite hosted Archaean gold systems in Australia, located 50km north of Kalgoorlie and is hosted within a sanukitoid type mafic. **Potential parallels with the granite related mineralisation at Hemi region (192.4Mt @ 1.1g/t Au).<sup>iii</sup>**

# MUSIC WELL: CLIFTON EAST NEXT STEPS



**Further RC/DD Drilling is planned for late May 2026.**

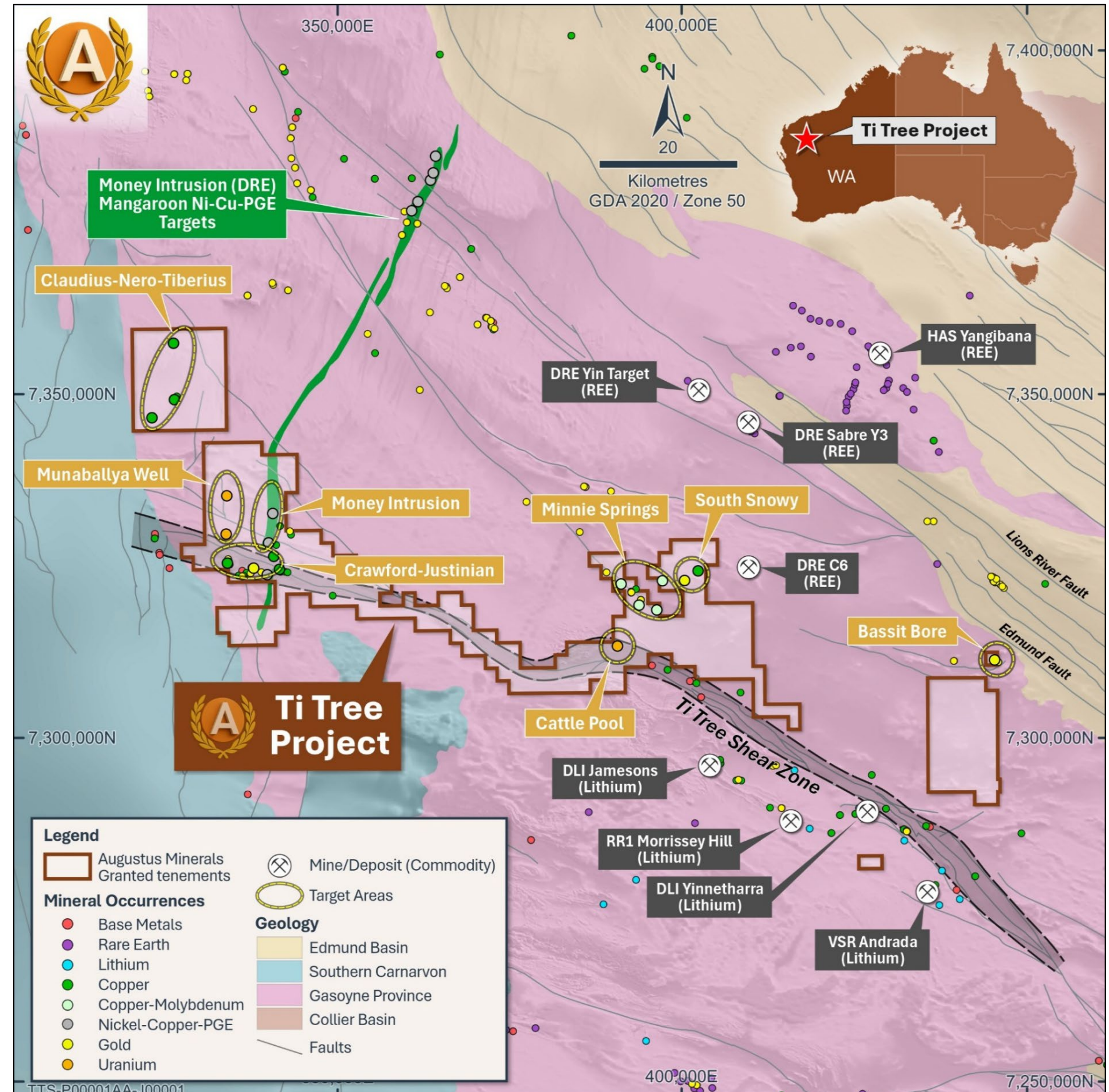
- 4 new drill lines are planned comprised of 23 x **100m** holes for **2,300m**.
- The **new drilling** will infill between the initial drill traverses.
- Test depth extensions in fresh rock.



GM Exploration Andrew Ford and Dr Walter Witt (GSWA, Centre for Exploration Targeting (UWA) examining Clifton East Chip trays.

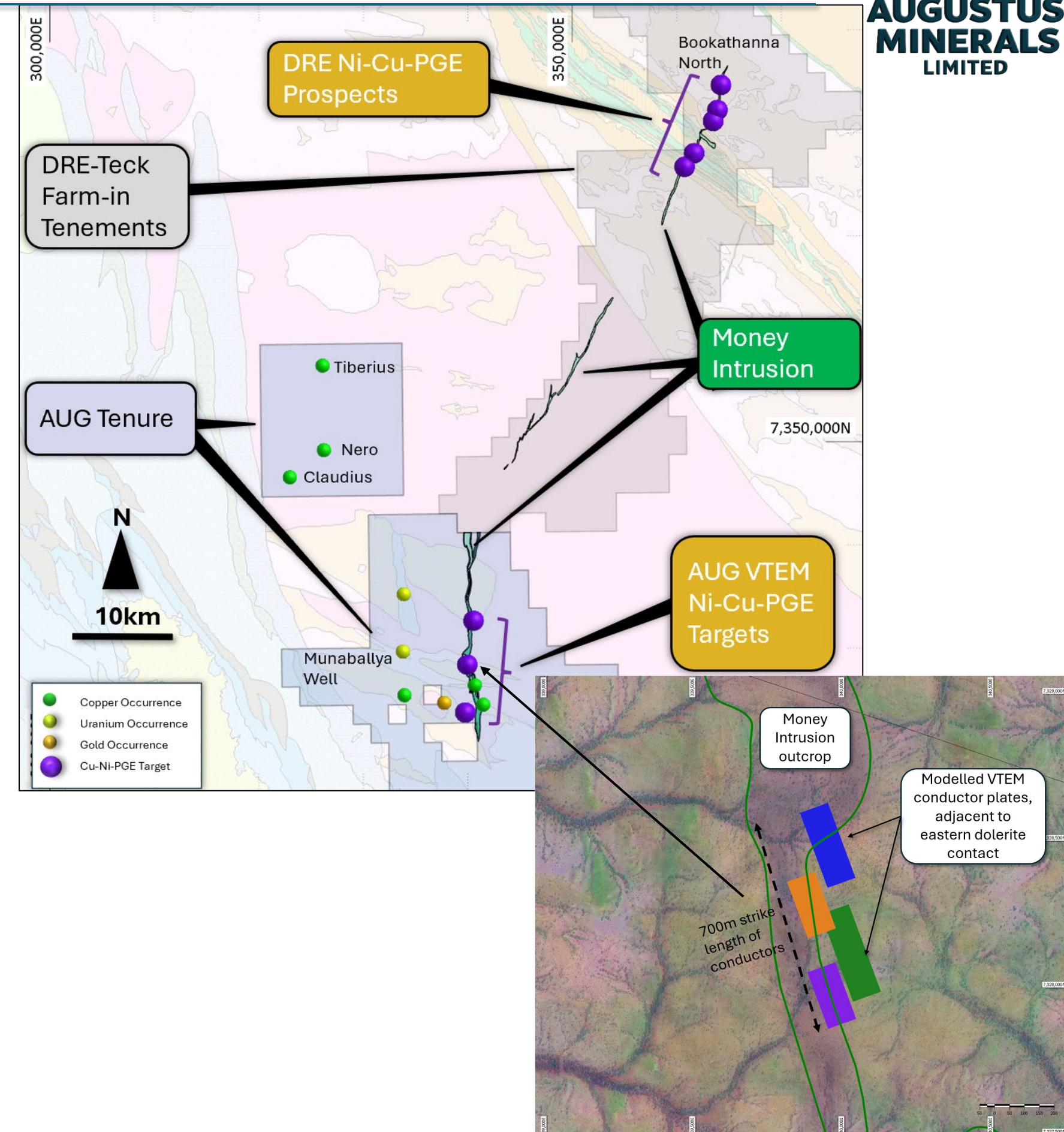
# TI-TREE PROJECT: MONEY INTRUSION

- Ti-Tree Project tenure is in the Northwest Gascoyne region.
- The 1,300km<sup>2</sup> project is surrounded by gold (Mangaroon DRE), rare earth (Yangibana HAS, Yin DRE), lithium (Yinnetharra DLI) development projects, and contains numerous **Cu-Au-Ni-Mo** targets requiring additional exploration.
- Tenure covers **large strike length of the deep penetrating Ti-Tree Shear Zone and the Minga Bar Fault.**
- Prospects include **Money Intrusion (Ni-Cu-PGE), Minnie Springs (Mo-Cu porphyry), Bassit Bore (Au)** and the **Crawford-Justinian area (Au-Cu).**



# TI-TREE PROJECT: MONEY INTRUSION

- The Money Intrusion, within Augustus' Ti-Tree tenure is contiguous with neighbour **Dreadnought** Resources Limited's (Dreadnought) Money Intrusion Project.
- Dreadnought has signed **\$15M Farm-in** and **JV Agreement** with **Teck Resources** Limited (Teck), where exploration has defined **Cu-Ni-PGE** in drilling<sup>2</sup>.
- Drilling identified **massive** to **semi massive sulphide** mineralisation at Bookathanna North (50km NNE of AUG Tenure):
  - REYRC013: **23m @ 0.50% Ni 0.51% Cu 0.02% Co 0.49g/t 3PGE from 36m including: 2m @ 3.32% Ni 2.88% Cu 0.12% Co 1.46g/t 3PGE from 45m** <sup>iv</sup>
  - REYRC019: **10m @ 0.36% Ni 0.45% Cu 0.02% Co 0.18g/t 3PGE from 76m including: 2m @ 1.15% Ni 1.30% Cu 0.06% Co 0.36g/t 3PGE from 78m** <sup>iiv</sup>
- VTEM Survey flown by Augustus modelled a bedrock conductor with dimensions of 1,000m in strike by 250m down dip and 10m wide dipping vertically.
- Follow-up surface geophysics planned prior to drill testing

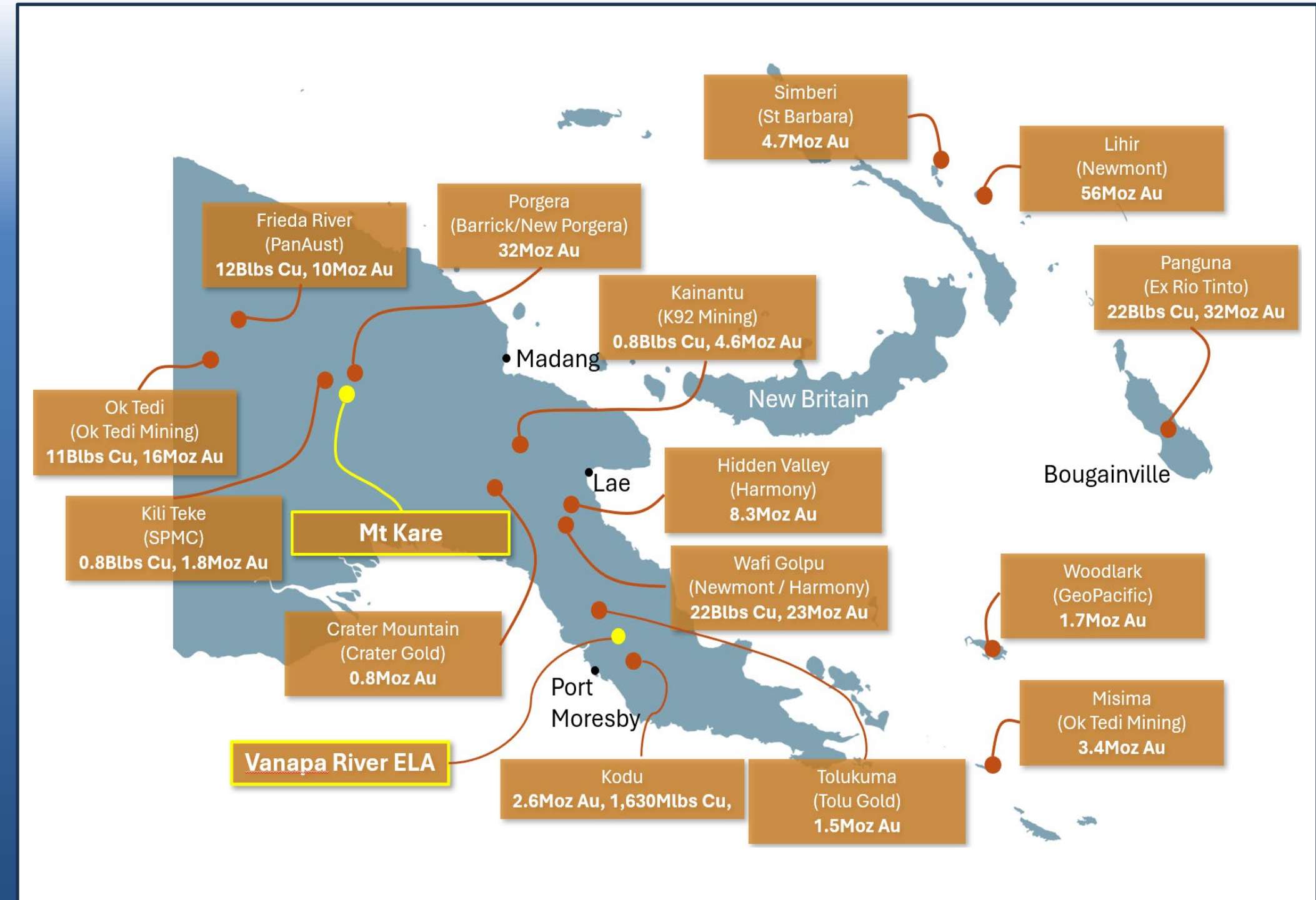




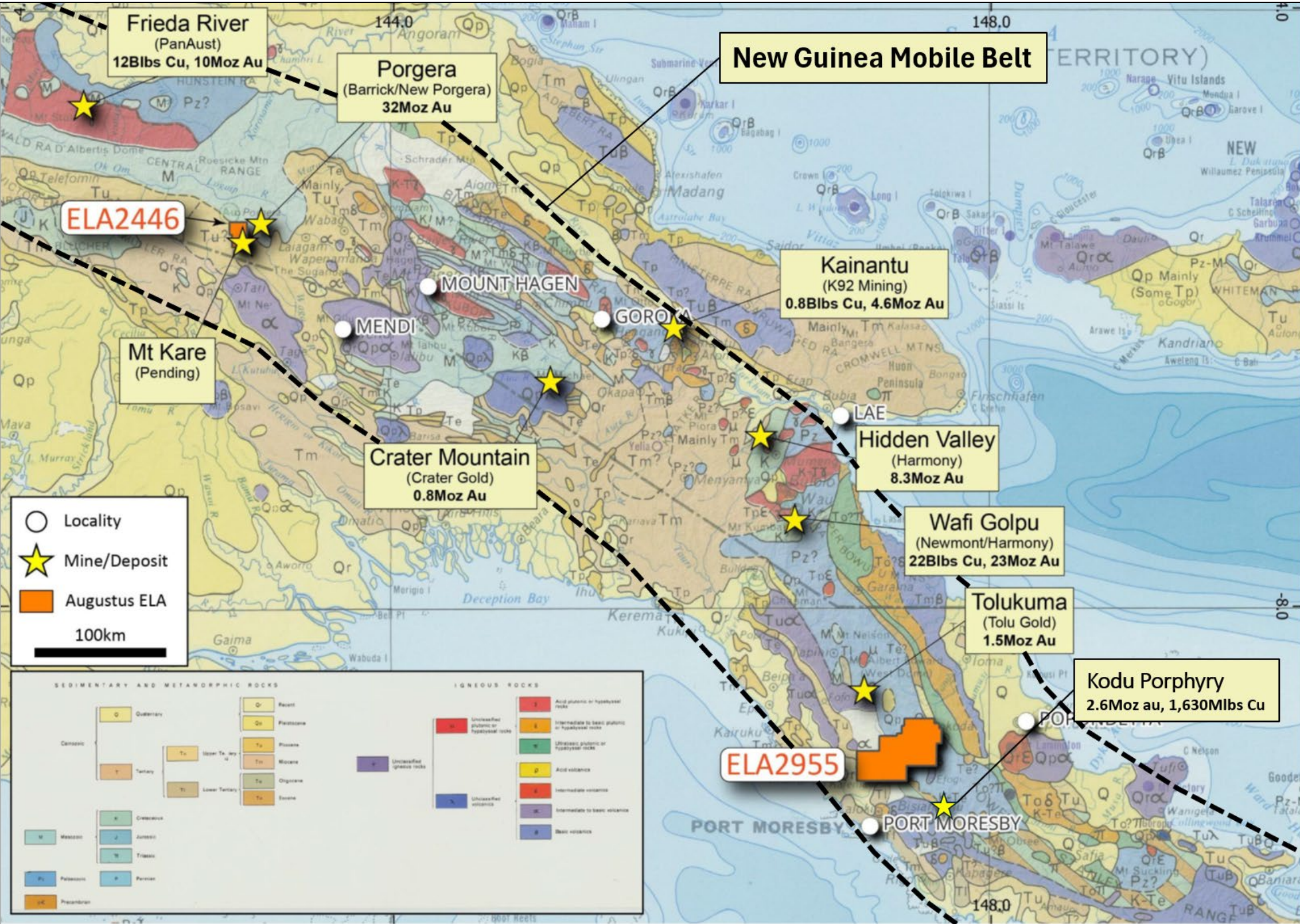
**AUGUSTUS  
MINERALS  
LIMITED**

# PAPUA NEW GUINEA

- **MT KARE GOLD PROJECT – ELA2446**
- **VANAPA RIVER – ELA2955**



# PNG - STRONG GOLD FOCUS

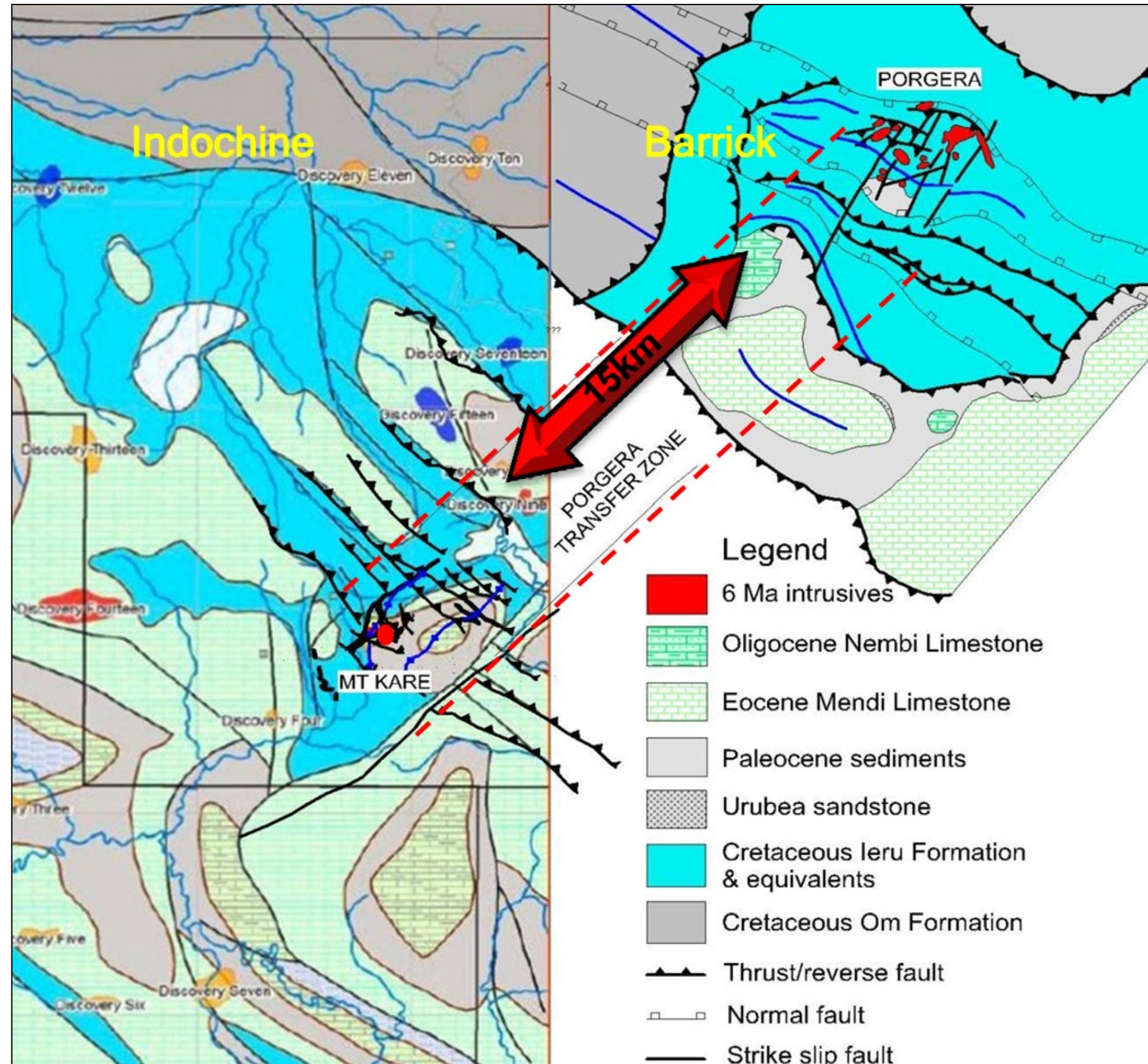


## PNG Applications

- **Mt Kare ELA2446** - covers 600km<sup>2</sup> including the **Mt Kare Deposit** (second-in-time application).
- **Vanapa River ELA2955** – covers 1,906km<sup>2</sup> of highly-prospective ground with **abundant alluvial workings**.
- Both ELA's situated on the **New Guinea Metallogenic Belt**, one of the most prospective gold-copper belts in the world and is host to **giant deposits**, including; **Frieda River** (12Blbs Cu & 10Moz Au), **Porgera** (32Moz Au), **Kainantu** (0.8Blbs Cu & 4.6Moz Au), **Hidden Valley** (8.3Moz Au) and **Wafi Golpu** (22Blbs Cu & 23Moz Au)

Location of Augustus / ACM PNG Tenement Applications.  
 Geological Map of the Territory of Papua and New Guinea, 1963, Australia. Bureau of Mineral Resources.

# PNG - MT KARE ELA2446



- Augustus has acquired Exploration Licence Application **ELA2446** that covers the Mt Kare Project.
- Mt Kare is located **15km** from, and is **geologically analogous** to, Barrick (Niugini) Limited's Porgera gold mine (33Moz Au).
- Mt Kare is an **alkali epithermal gold deposit**, a rare class of gold deposit, that includes **Porgera**, **Lihir** (PNG) (47Moz Au), **Cadia-Ridgeway** (NSW) (>50Moz Au) & **Cripple Creek** (Colorado) (26Moz Au).
- Augustus is the **only ASX-listed** company with a valid application and is **actively pursuing pathways** to secure the licence.
- More than **A\$100m historically invested** in exploration and mining studies including **454 diamond drill holes for 73,639m**.

Refer company announcements dated 25 June 2025, 9 May 2025



Photos from the Mt Kare adit development in 2014 with ACM PNG staff.

- Mt Kare is one of the **largest undeveloped gold assets in Australasia**
- **Mineral Resources Authority of PNG Expect Minimum Criteria of the Applications:**
  - **tangible work programs** necessary to advance the project into feasibility studies,
  - backed by **sound technical team with proven mine development record**, and
  - **capacity to finance** exploration and development.
- **Augustus Minerals strategy will focus on:**
  - **Development of underground adit** to enable rapid diamond drilling from underground to fast-track mine development and production.

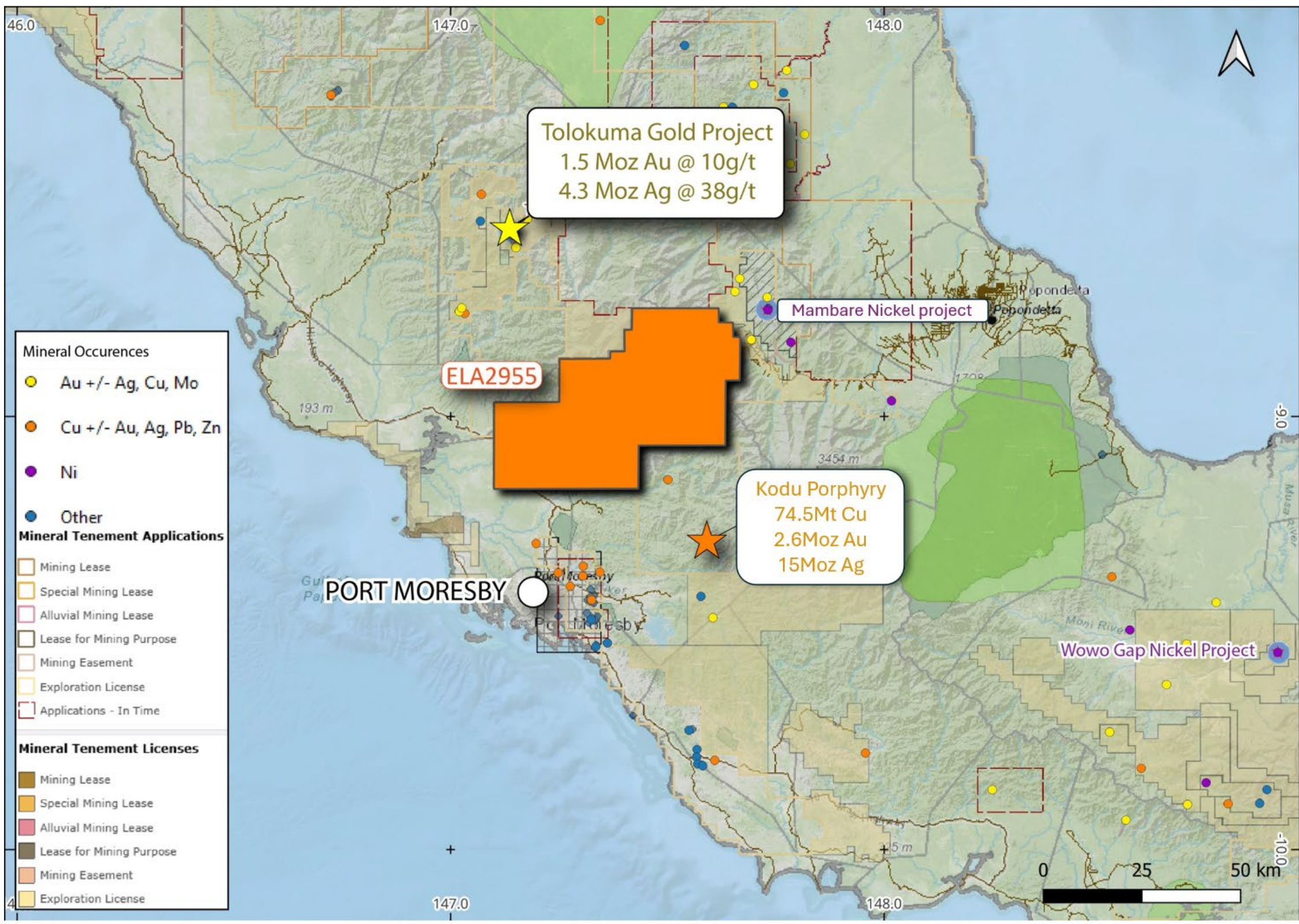
# PNG - MT KARE LANDOWNER MEETINGS



*Joint Landowner meetings with key executives from Hela and Enga Provinces – Nov 2025*

- **Australia's commitment** to Papua New Guinea as a long-term strategic partner.
- Exec. Chair, Brian Rodan, has **strong working relationships** with PNG Government and land holders in the Mt Kare district **developed over 15 years.**
- Mt Kare licensing process has been held up for over 10 years but is **now advancing.**
- Warden is advancing the in-time applications
- AUG is the **only ASX-listed applicant** with a fully valid license application.

# PNG - VANAPA RIVER ELA2955



- Following an invitation from the Local Landowners, Augustus has applied for **ELA2955** in the Kira Koiari district.
- Highlights the Augustus' developing **Social Licence to Operate** in PNG.
- 35km north of Port Moresby, **40km along strike from Tolokuma Gold Mine** (1.5Moz Au & 4.3Moz Ag).
- 1,906km<sup>2</sup> of tenure highly-prospective for **low-sulphidation epithermal deposits**.
- **Appreciable amounts of gold continue to be extracted by artisanal alluvial miners.**
- No modern exploration completed and represents a unique opportunity to conduct true **frontier exploration**.
- Augustus is chasing **giant orebodies in a world-class district**.

# VANAPA RIVER – WORLD CLASS DISTRICT



- Long history of **alluvial mining** with appreciable amounts of gold still being extracted today.
- Augustus is searching for the **source of the alluvial gold**.
- In cooperation with local landowners, Augustus plans to conduct **frontier exploration**.
- **A region synonymous with giant orebodies**



# SUMMARY

- 01 Music Well Gold Project**
  - 1,242 km<sup>2</sup> area of high gold endowment with minimal exploration.
  - Wide gold intersections in first drilling at Clifton East
- 02 Mt Kare Project**
  - 600 km<sup>2</sup> ELA, Potential Company maker.
  - The next Porgera?
- 03 Vanapa River**
  - 1,900 km<sup>2</sup> ELA
  - Social Licence to Operate
  - World class district near gold deposits
- 04 Ti-Tree Shear Project**
  - 1,300km<sup>2</sup> of tenure including 85kms of belt-scale Ti-Tree Shear.
  - Cu-Ni-PGE, Cu-Mo and Au Potential

# CONTACT



---

**Brian Rodan**  
Executive Chairman

**Andrew Ford**  
GM Exploration

**ASX:AUG**

(08) 6458 4200

[admin@augustusminerals.com.au](mailto:admin@augustusminerals.com.au)

[www.augustusminerals.com.au](http://www.augustusminerals.com.au)



# AUGUSTUS MINERALS LIMITED

## APPENDIX

The references in this announcement to Exploration Results were reported in accordance with Listing Rule 5.7 in the announcement titled:

- 18 November 2024** “Music Well Gold Project Exploration Update”
- 2 April 2025** “High Grade Gold Mineralisation Continues at Music Well”
- 9 May 2025** “AUG to Secure Licence Application for Mt Kare Gold Project.”
- 22 May 2025** “High-Grade Gold Samples extend Clifton East Strike to 1km”.
- 29 May 2025** “Visible Gold and New Targets Identified at Music Well.”
- 25 June 2025** “Announcement SPA Completed & Mt Kare Application Moves to Second in Line.”
- 18 July 2025** “High Grade Vein with Visible Gold Discovered at Music Well”.
- 25 July 2025** “Music Well Heritage Protection Agreement signed”.
- 4 August 2025** “Music Well Exploration Update
- 4 September 2025** “Mt Kare Application Update – Potential High Grade Development Opportunity”
- 30 April 2026** “Wide gold intersections at Music Well”

The Company confirms that it is not aware of any new information or data as at the end of this Report that materially affects the information included in the previous market announcements noted above.

### Major PNG Gold Project Resource sources

|                 | Location                  | Operator                  | MT    | Cu%  | Au g/t | MT copper | MLbs Copper | Moz Au | Details                       | Source  |
|-----------------|---------------------------|---------------------------|-------|------|--------|-----------|-------------|--------|-------------------------------|---|
| Grasberg        | West Papua, Indonesia     | Freeport McMoran          | 6000  | 0.9  | 0.7    | 54.0      | 119,048     | 135.0  | Past production and resources | <a href="https://portergeo.com.au/database/mineinfo.asp?mineid=mn054">https://portergeo.com.au/database/mineinfo.asp?mineid=mn054</a>   |
| Ok Tedi         | Papua New Guinea mainland | Ok Tedi Mining            | 800   | 0.65 | 0.63   | 5.2       | 11,464      | 16.2   | Past production and resources | <a href="https://portergeo.com.au/database/mineinfo.asp?mineid=mn194">https://portergeo.com.au/database/mineinfo.asp?mineid=mn194</a>   |
| Frieda River    | Papua New Guinea mainland | PanAust                   | 1060  | 0.53 | 0.29   | 5.618     | 12,385      | 9.9    | Resource                      | <a href="https://portergeo.com.au/database/mineinfo.asp?mineid=mn388">https://portergeo.com.au/database/mineinfo.asp?mineid=mn388</a>   |
| Wafi Golpu      | Papua New Guinea mainland | Harmony/Newmont           | 1000  | 1    | 0.71   | 10        | 22,046      | 22.8   | Resource                      | <a href="https://portergeo.com.au/database/mineinfo.asp?mineid=mn809">https://portergeo.com.au/database/mineinfo.asp?mineid=mn809</a>   |
| Lihir           | Papua New Guinea islands  | Newmont                   | 780   |      | 2.25   |           |             | 56.4   | Past production and resources | <a href="https://portergeo.com.au/database/mineinfo.asp?mineid=mn052">https://portergeo.com.au/database/mineinfo.asp?mineid=mn052</a>   |
| Kainantu        | Papua New Guinea mainland | K92 Mining                | 25    | 1.5  | 5.7    | 0.375     |             | 827    | Resource                      | <a href="https://www.k92mining.com/">https://www.k92mining.com/</a>   |
| Porgera         | Papua New Guinea mainland | Barrick/New Porgera JV    | 398   |      | 2.5    |           |             | 32.0   | Past production and resources | <a href="https://portergeo.com.au/database/mineinfo.asp?mineid=mn053">https://portergeo.com.au/database/mineinfo.asp?mineid=mn053</a>   |
| Panguna         | Papua New Guinea islands  | Pending                   | 2500  | 0.4  | 0.4    | 10        | 22,046      | 32.2   | Past production and resources | <a href="https://portergeo.com.au/database/mineinfo.asp?mineid=mn441">https://portergeo.com.au/database/mineinfo.asp?mineid=mn441</a>   |
| Hidden Valley   | Papua New Guinea mainland | Harmony Gold              | 152.4 |      | 1.7    |           |             | 8.3    | Past production and resources | <a href="https://portergeo.com.au/database/mineinfo.asp?mineid=mn897">https://portergeo.com.au/database/mineinfo.asp?mineid=mn897</a>   |
| Tolokuma        | Papua New Guinea mainland | Tolu Minerals             | 3.5   |      | 13     |           |             | 1.5    | Past production and resources | <a href="https://www.toluminerals.com/">https://www.toluminerals.com/</a>   |
| Woodlark Island | Papua New Guinea islands  | Geopacific Minerals       | 48    |      | 1.07   |           |             | 1.7    | Resource                      | <a href="https://geopacific.com.au/">https://geopacific.com.au/</a>   |
| Misima          | Papua New Guinea islands  | Ok Tedi Mining            | 99.7  |      | 1.07   |           |             | 3.4    | Resource                      | <a href="https://portergeo.com.au/database/mineinfo.asp?mineid=mn811">https://portergeo.com.au/database/mineinfo.asp?mineid=mn811</a>   |
| Kili Teke       | Papua New Guinea mainland | South Pacific Metals Corp | 237   | 0.34 | 0.24   | 0.8058    | 1,776       | 1.8    | Resource                      | <a href="https://southpacificmetals.ca/">https://southpacificmetals.ca/</a>   |
| Crater Mountain | Papua New Guinea mainland | Crater Gold               | 24    |      | 1.0    |           |             | 0.8    | Resource                      | <a href="http://www.cratergold.com.au">http://www.cratergold.com.au</a>   |
| Kodu            | Papua New Guinea mainland | Ex Frontier Resources     | 276   | 0.27 | 0.3    | 0.75      | 1,630       | 2.67   | Resource                      | <a href="https://portergeo.com.au/database/mineinfo.php?mineid=mn1288">https://portergeo.com.au/database/mineinfo.php?mineid=mn1288</a> |
|                 |                           |                           |       |      |        | 87        | 191,222     | 329    |                               |   |

### References

- i “Woodcutters Goldfield – Federal Goldfield” portergeo.com.au
- ii Geological Survey of Western Australia GSWA Record 2023/12 “Systematic Classification of Yilgarn Craton Granitic Rocks” Perth 2023.
- iii Porter Geo.com.au Mallina Basin Gold  
<https://portergeo.com.au/database/mineinfo.php?mineid=mn707>
- iv Dreadnought Resources ASX Release 1 May 2025 “\$15M Farm-in Agreement – Money Intrusion, Mangaroon”