



**AUGUSTUS
MINERALS**
LIMITED

**AGM
Presentation**

November 2024

ASX:AUG

**Gold
Copper
Uranium**



**TI-TREE SHEAR PROJECT - GASCOYNE REGION, WA
MUSIC WELL GOLD PROJECT - LEONORA REGION, WA**

Statements and Disclaimers



These presentation materials and any accompanying verbal presentation (together, the Presentation Materials) have been prepared by Augustus Minerals Limited (Company) as at 16 February 2024 and statements are current only as at that date. Information in the Presentation Materials remains subject to change without notice. The Company has no responsibility or obligation to inform you of any matter arising or coming to its notice, after the date of this document, which may affect any matter referred to in this document. By receiving the Presentation Materials, you acknowledge and represent to the Company that you have read, understood and accepted the terms of this disclaimer. It is the responsibility of all recipients of these Presentation Materials to obtain all necessary approvals to receive these Presentation Materials and receipt of the Presentation Materials will be taken by the Company to constitute a representation and warranty that all relevant approvals have been obtained.

NOT AN OFFER

These Presentation Materials are for information purposes only. The Presentation Materials do not comprise a prospectus, product disclosure statement or other offering document under Australian law (and will not be lodged with the Australian Securities and Investments Commission) or any other law. The Presentation Materials also do not constitute or form part of any invitation, offer for sale or subscription or any solicitation for any offer to buy or subscribe for any securities nor shall they or any part of them form the basis of or be relied upon in connection therewith or act as any inducement to enter into any contract or commitment with respect to securities. In particular, these Presentation Materials do not constitute an offer to sell or a solicitation to buy, securities in the United States of America.

NOT INVESTMENT ADVICE

The Presentation Materials are not investment or financial product advice (nor tax, accounting or legal advice) and are not intended to be used for the basis of making an investment decision. Recipients should obtain their own advice before making any investment decision.

SUMMARY INFORMATION

The Presentation Materials do not purport to be all inclusive or to contain all information about the Company or any of the assets, current or future, of the Company. The Presentation Materials contain summary information about the Company and its activities which is current as at the date of the Presentation Materials. The information in the Presentation Materials is of a general nature and does not purport to contain all the information which a prospective investor may require in evaluating a possible investment in the Company or that would be required in a prospectus or product disclosure statement or other offering document prepared in accordance with the requirements of Australian law or the laws of any other jurisdiction, including the United States of America.

While reasonable care has been taken in relation to the preparation of the Presentation Materials, none of the Company or its directors, officers, employees, contractors, agents, or advisers nor any other person (Limited Party) guarantees or makes any representations or warranties, express or implied, as to or takes responsibility for, the accuracy, reliability, completeness or fairness of the information, opinions, forecasts, reports, estimates and conclusions contained in this document. No Limited Party represents or warrants that this document is complete or that it contains all information about the Company that a prospective investor or purchaser may require in evaluating a possible investment in the Company or acquisition of shares in the Company. To the maximum extent permitted by law, each Limited Party expressly disclaims any and all liability, including, without limitation, any liability arising out of fault or negligence, for any loss arising from the use of or reliance on information contained in this document including representations or warranties or in relation to the accuracy or completeness of the information, statements, opinions, forecasts, reports or other matters, express or implied, contained in, arising out of or derived from, or for omissions from, this document including, without limitation, any financial information, any estimates or projections and any other financial information derived therefrom.

JORC CODE

The information in the Presentation Materials relating to exploration results, exploration targets, mineral resources and ore reserves has been reported by the Company in accordance with the 2012 Edition of the 'Australasian Code for Reporting of Exploration results, Mineral Resources and Ore Reserves' (JORC Code) previously (refer to the Company's prospectus available on the Company website at <http://augustusminerals.com.au/>) and listed at the back of this report. The Company confirms that it is not aware of any new information as at the date of the Presentation Materials that materially affects the information included in the Presentation Materials and that all material assumptions and technical parameters underpinning the estimates in the Company's prospectus continue to apply and have not material changed

PROXIMATE STATEMENTS

This announcement contains references to JORC Mineral Resources derived by other parties either nearby or proximate to the Music Well Project and includes references to topographical or geological similarities to that of the Music Well Project. It is important to note that such discoveries or geological similarities do not in any way guarantee that the Company will have any success or similar successes in delineating a JORC compliant Mineral Resource on the Music Well Project, if at all.

COMPETENT PERSON STATEMENT

The information in this announcement related to Exploration Results is based on and fairly represents information compiled by Mr Andrew Ford. Mr Ford is employed as the General Manager - Exploration and is a member of the Australasian Institute of Mining and Metallurgy. He has sufficient experience of relevance to the styles of mineralisation and types of deposits under consideration and to the activities undertaken to qualify as a Competent Person as defined in the 2012 Edition of the Joint Ore Reserves Committee (JORC) Australasian Code for Reporting of Exploration Results, Mineral Resources and Ore Reserves. He consents to the inclusion in this announcement of the matters based on information in the form and context in which they appear.

FORWARD LOOKING STATEMENTS

This announcement may contain certain forward-looking statements and projections. Such forward looking statements/projections are estimates for discussion purposes only and should not be relied upon. Forward looking statements/projections are inherently uncertain and may therefore differ materially from results ultimately achieved. Augustus Minerals Limited does not make any representations and provides no warranties concerning the accuracy of the projections and disclaims any obligation to update or revise any forward-looking statements/projects based on new information, future events or otherwise except to the extent required by applicable laws. While the information contained in this report has been prepared in good faith, neither Augustus Minerals Limited or any of its directors, officers, agents, employees or advisors give any representation or warranty, express or implied, as to the fairness, accuracy, completeness or correctness of the information, opinions and conclusions contained in this announcement.

Experienced Board & Management



Brian Rodan
Executive
Chairman



Brian Rodan has over 45 years' experience and was the managing director and owner of Australian Contract Mining Pty Ltd (ACM), a mid-tier mining contracting company that successfully completed \$1.5 billion worth of work over a 20 year period. ACM was sold to an ASX listed company in 2017.

He is currently Executive Chairman of Siren Gold (SNG) and of Icen Gold Limited (ICL) and was a founding Director of Dacian Gold Ltd 2013, and Desert Metals Ltd 2020 and the largest shareholder upon listing both companies on the ASX.

Graeme
Smith
Non-
Executive
Director



Graeme Smith is an experienced resources sector chief financial officer, company secretary and corporate executive who has worked with mining and exploration companies with operations in Australia (Croesus Mining NL, Genesis Minerals Limited, Jabiru Metals Limited, Breaker Resources NL, Pluton Resources Limited) and overseas (Tanga Resources Limited, Ikwezi Mining Limited) for the past 30 years.

Darren
Holden
Non-
Executive
Director



Dr Darren Holden is a geologist with 28 years industry experience in mineral exploration and exploration technologies. He has worked in North America, the Pacific and Australia, where he has been involved in discovery stage copper, gold, silver, molybdenum and platinum group elements deposits. He specialises in regional to local scale targeting using the integration of geology, geophysics and geochemistry

Dr Holden holds a BSc (Hons) First Class (Geology) from The University of Western Australia and a PhD (History) from The University of Notre Dame Australia.

Andrew
Ford
General
Manager
Exploration



Andrew's career spans 35 years of exploration and mine development experience in multiple commodities for both majors, including Homestake and Barrick Gold, and junior ASX listed companies. He has led technical teams throughout Australia, Africa, USA, Europe and Asia, including leading the geology team at the 100Mt Bawdwin base metals project in Myanmar through the DFS process.

In his most recent role Andrew led the geology team at Hastings Technology Metals with a focus on resource growth and exploration at the Yangibana Rare Earths Project, where Mineral Resources have now grown to 29.93Mt of TREO.

Shares on Issue
169.946M

Share Price
3.6c

Cash
\$3.78M at 30/9/24

Major Shareholders

Top 20 Shareholders
53.1%

Board/Management
35%

BBR Group
34%

**Broker
Coverage**

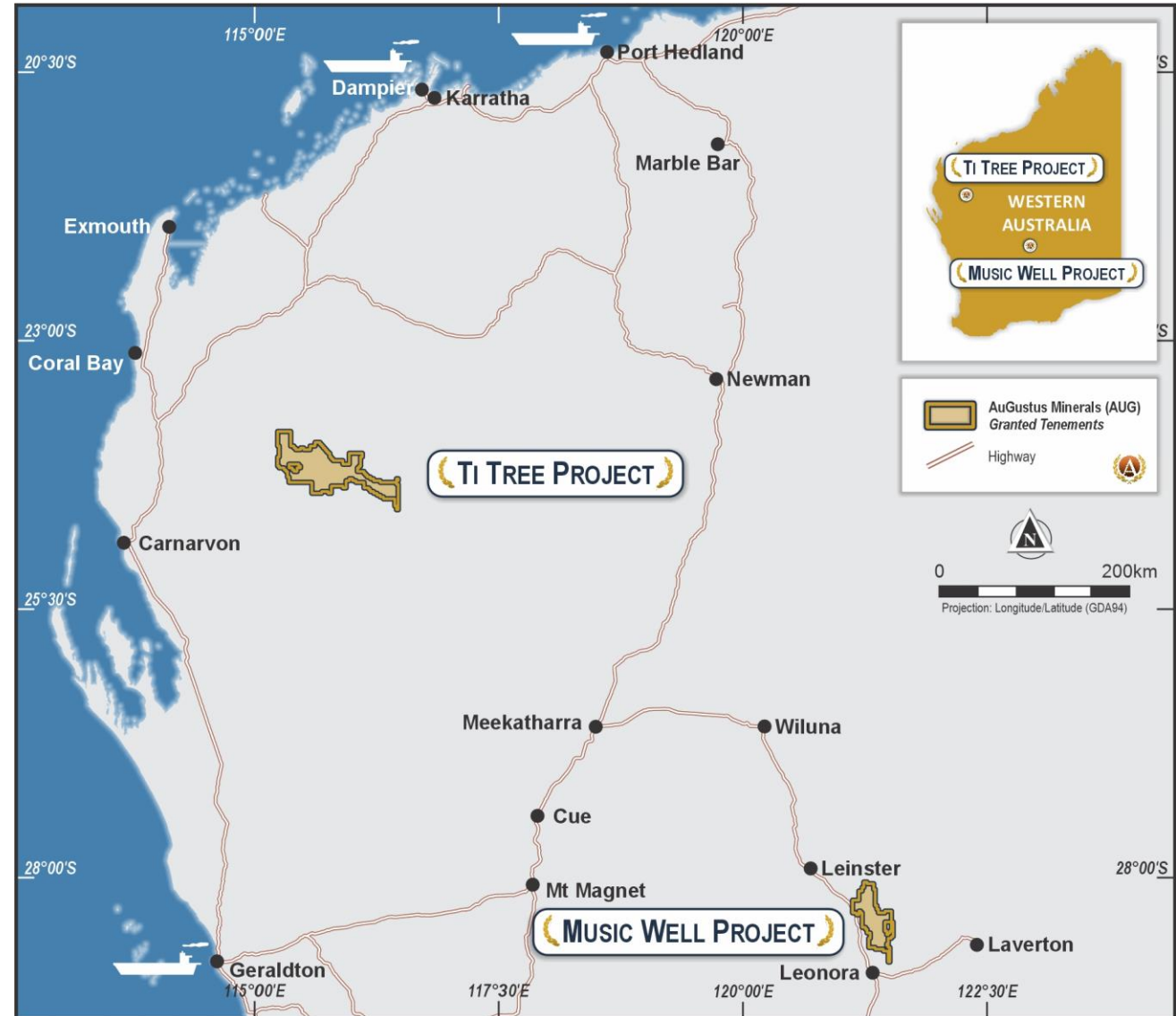


Ti-Tree Shear Project

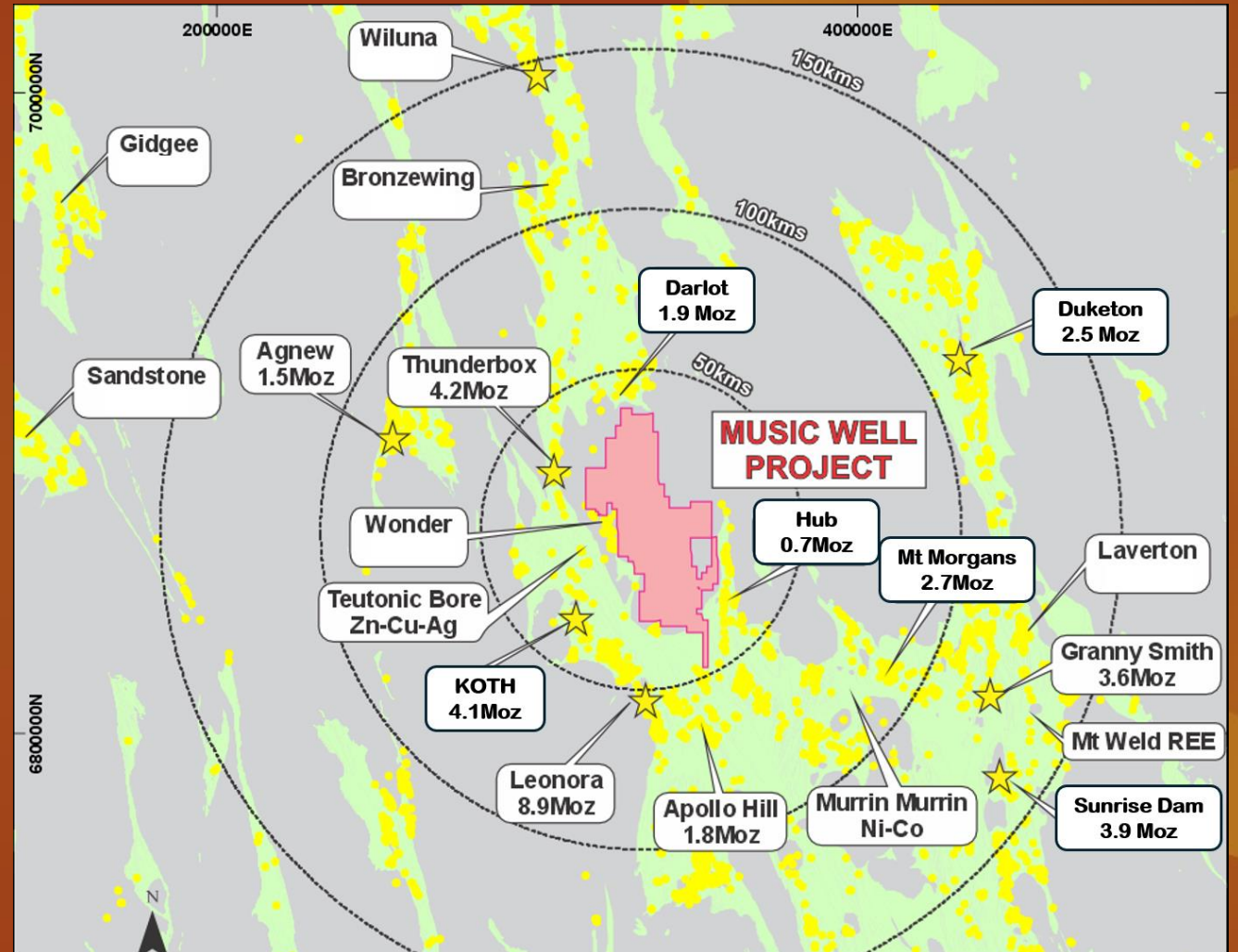
- 3,600km² of tenure including 85kms of belt-scale Ti-Tree Shear
- Copper – molybdenum porphyry style mineralisation at Minnie Springs;
- New discoveries at Tiberius, Claudius, South Snowy, Justinian, Nero: copper-gold-silver
- Uranium Potential

Music Well Gold Project – acquired 12/11/24

- 1,448km² of tenure 35km north of Leonora in the Northeastern Goldfields of WA
- Producing gold mines to the east and west of the tenure;
- Limited historic exploration
- Prospects identified with rock chips up to 25.1g/t Au



MUSIC WELL GOLD PROJECT



Ref: Augustus Minerals Limited (ASX:AUG) ASX Announcement
"Music Well Gold Project Exploration Update" on 18.11.24

Music Well: Project Highlights

Location

Located in the Yilgarn Craton in WA.

Located 35km north of Leonora & 45km south of Leinster.

The EGST has produced 130Moz of gold & contains 17 world class gold deposits.

6 Key Gold Targets

- Bull Head Breakaway (Au)
- St Patricks Well (Au)
- Clifton East
- Chandlers East
- Jindardie (Au)
- Western Terrace (Au)

Geology

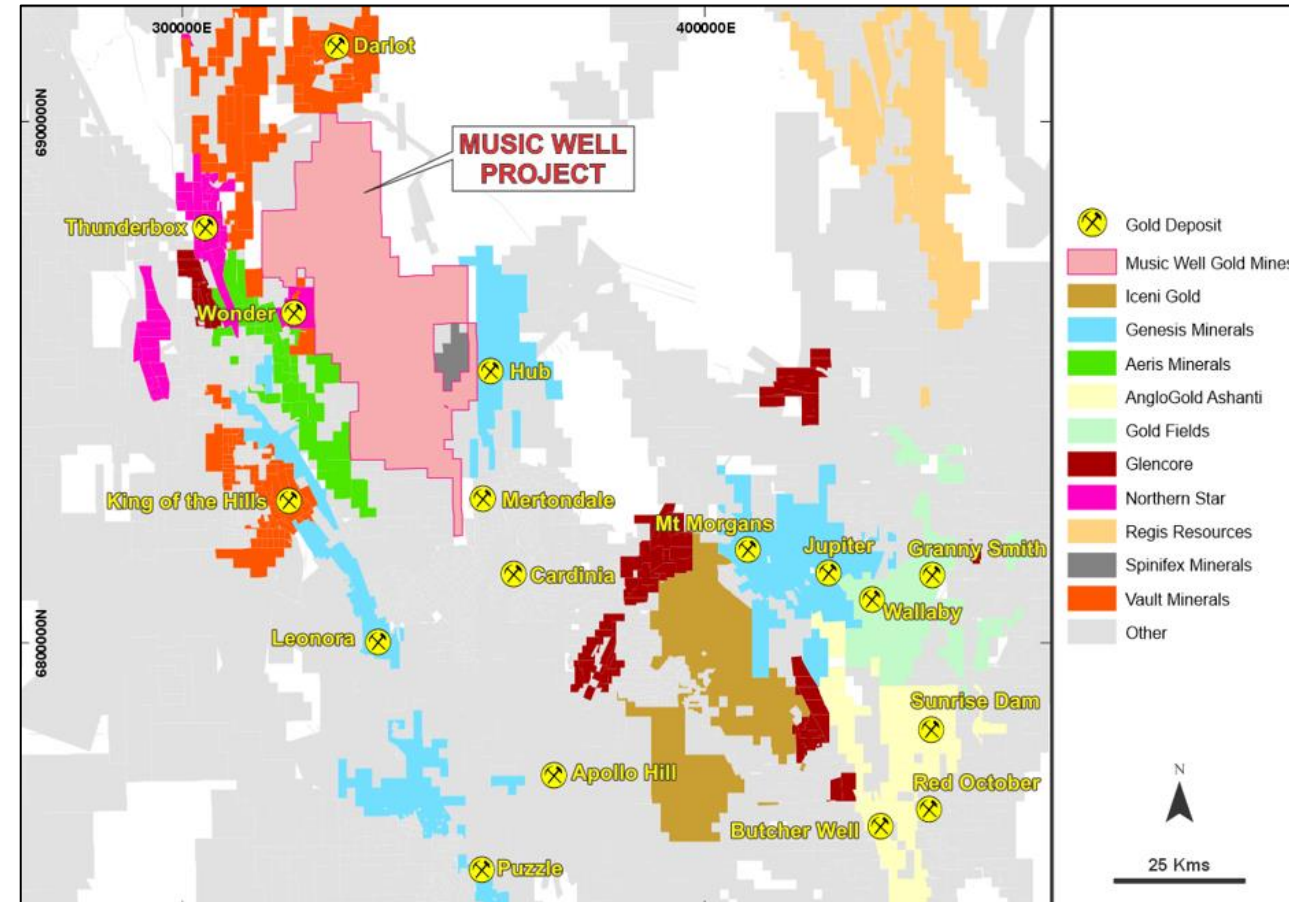
Primary mineralisation styles on MWGM 1448km² tenement:

- Granitoid hosted shear zone gold mineralisation
- Intrusion related gold mineralisation

Neighbours

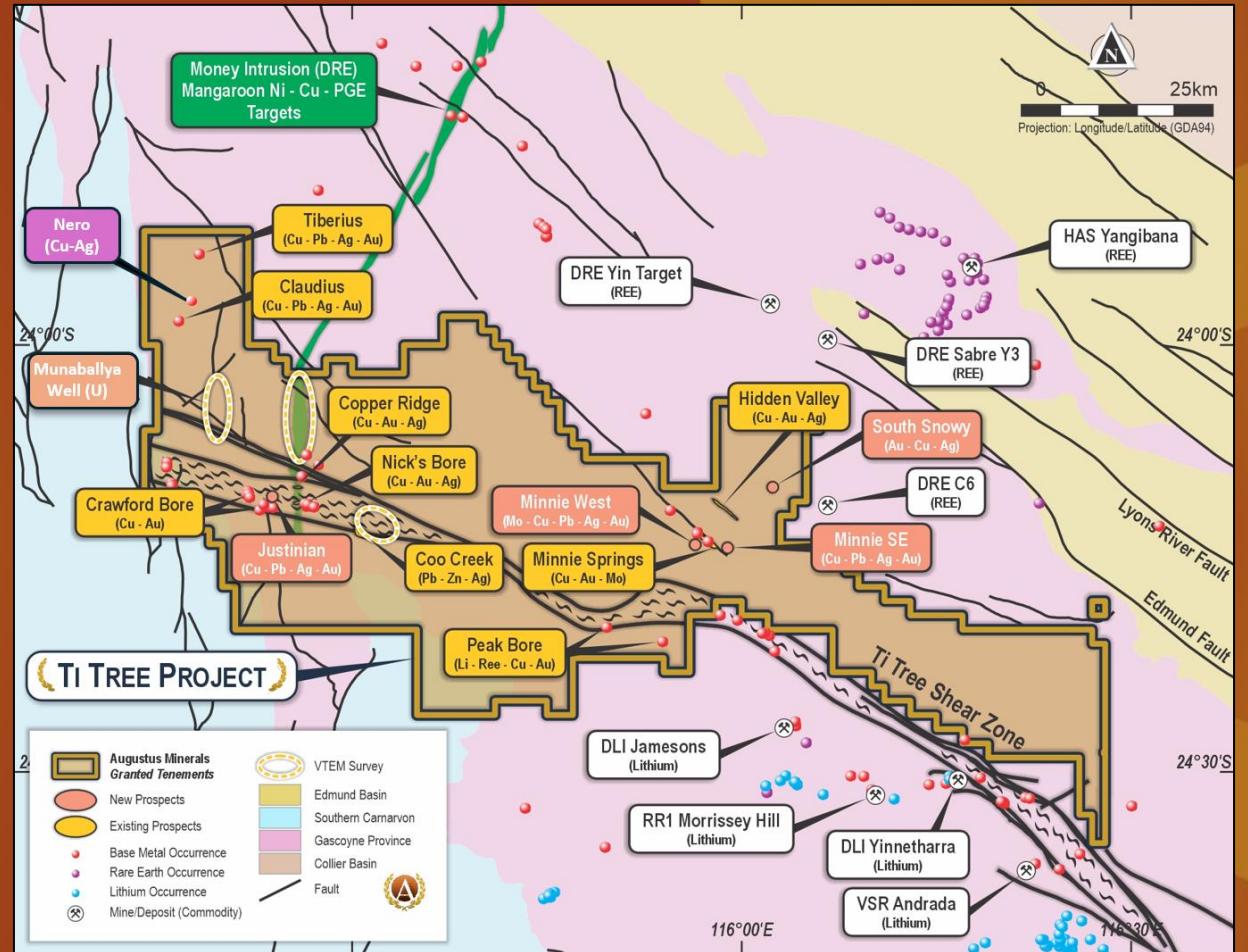
Surrounded by several significant operating mines including:

- Wonder Underground (NST) (1km)
- Darlot Gold Mine (Vault) (12km)
- King of the Hills (Vault) (20km)
- Thunderbox (NST) (20km)



Ref: Augustus Minerals Limited (ASX:AUG) ASX Announcement "Music Well Gold Project Exploration Update" on 18.11.24

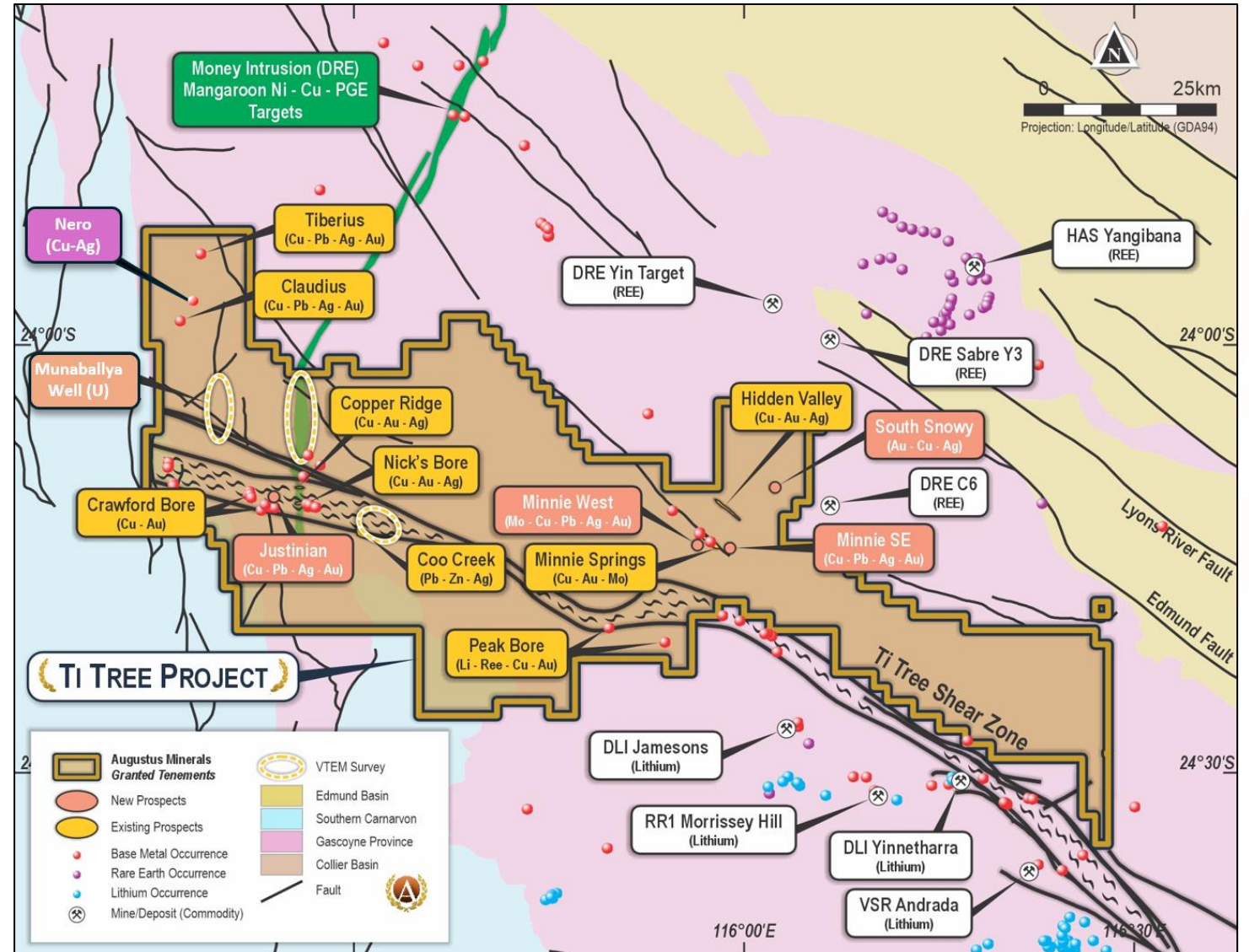
TI-TREE SHEAR PROJECT



Ti-Tree Shear: Exploration Program 2024

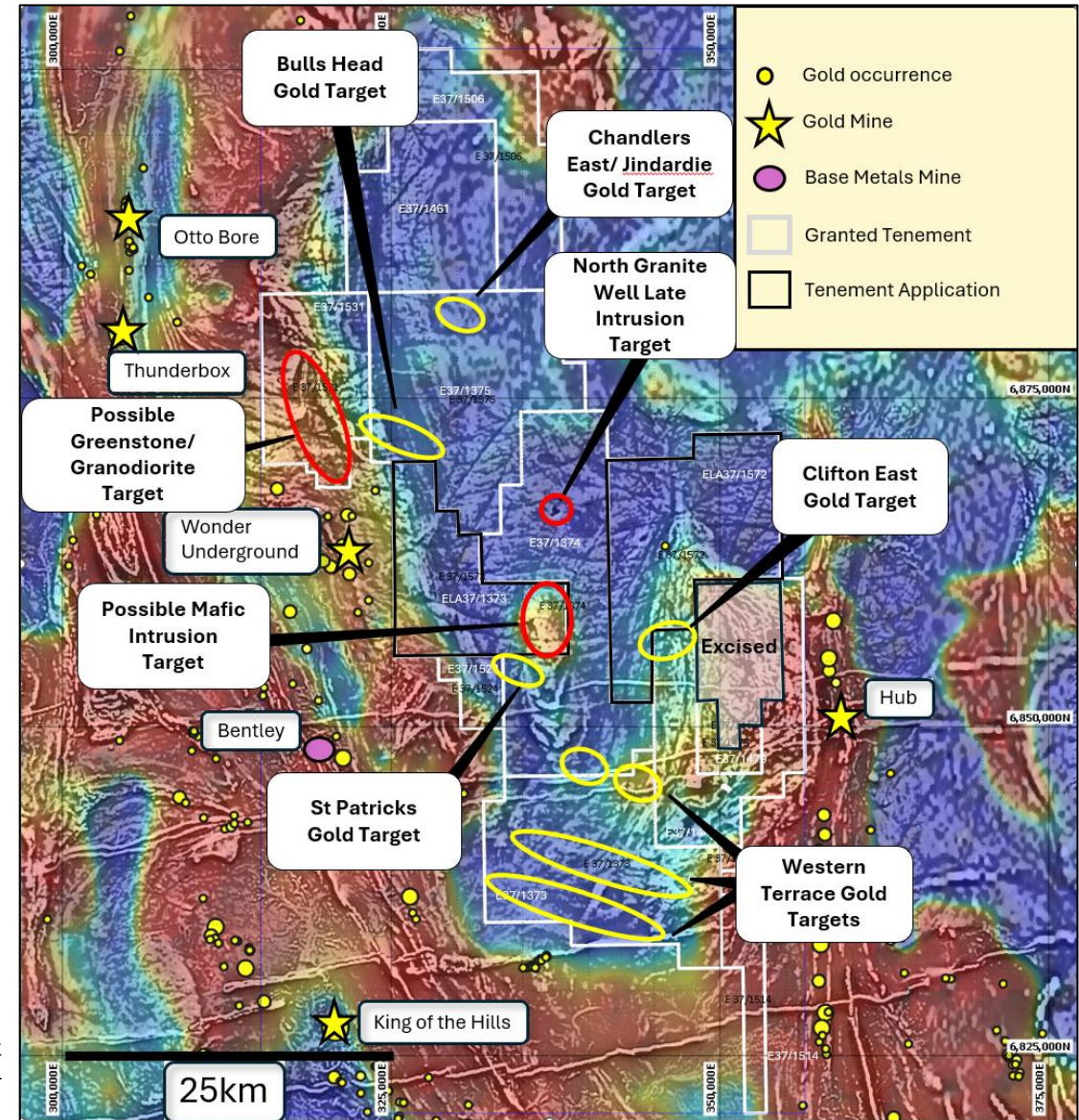
Underexplored region

- 85kms of belt-scale Ti-Tree Shear
- Endowment of critical mineral commodity anomalies
- Copper – molybdenum porphyry mineralisation intersected at Minnie Springs;
- New discoveries at Tiberius, Claudius, South Snowy, Justinian, Nero: copper-gold-silver
- Uranium Potential



Music Well: Regional

- Area mapped as intermediate to granitic intrusions in Kurnalpi Terrane by GSWA
- Potential exists, as evidenced from geophysics, for denser/more magnetic greenstone lithologies to be present beneath shallow cover ¹¹
- Limited rock chips indicate potential for gold and other metal mineralisation
- Close proximity to Jaguar, Teutonic Bore, Thunderbox, Wonder North, Darlot, Tarmoola, Wonder North & world class gold district at Gwalia



Ref: Augustus Minerals Limited (ASX:AUG) ASX Announcement
"Music Well Gold Project Exploration Update" on 18.11.24

Music Well: Major Mineralised Structures

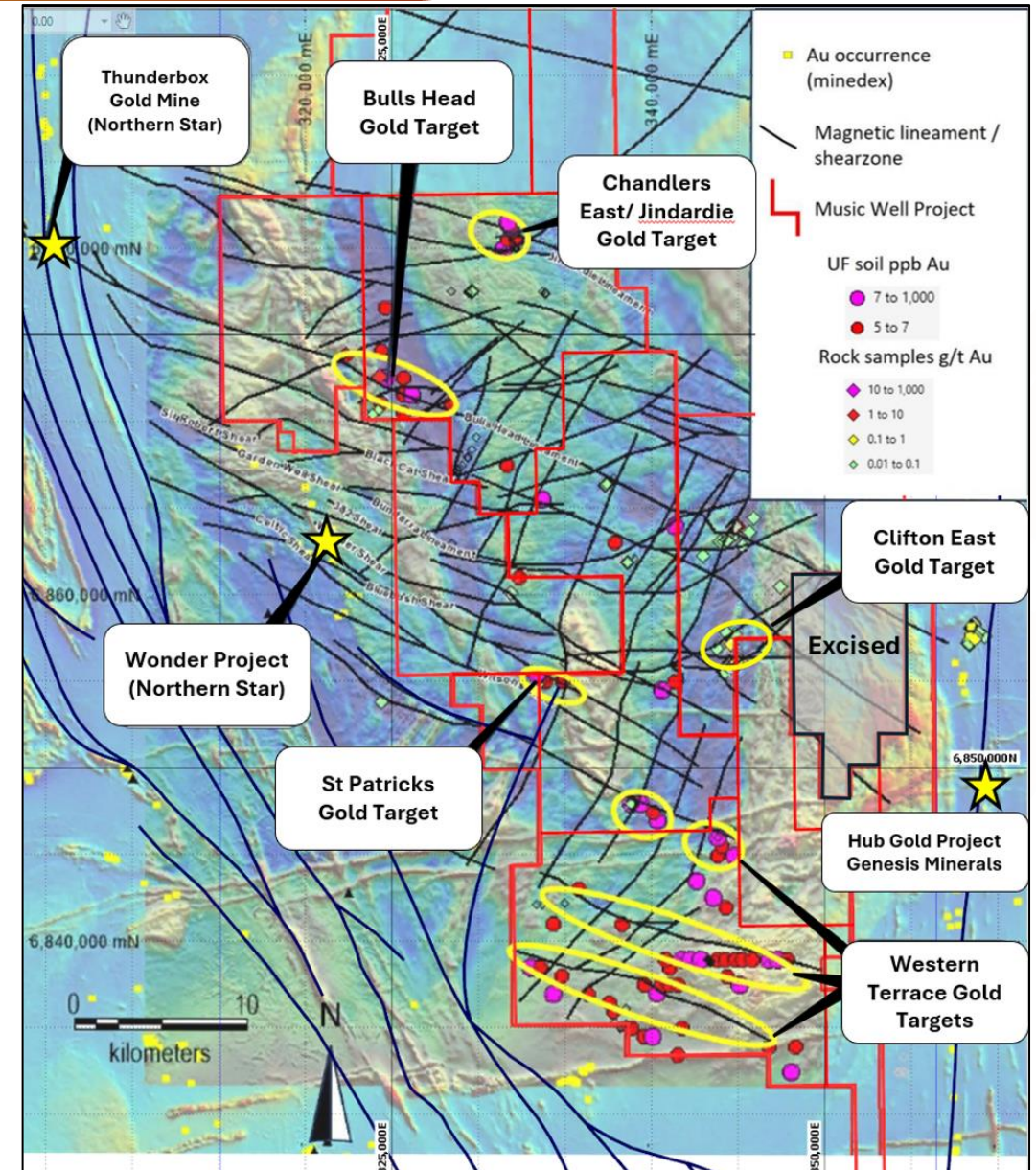
Wonder Shear Zone Corridor

- **WNW-ENE** striking structures
- **Host of** Wonder, Wonder North, Great Western, Celtic and Bundarra Mines (>1Moz)
- **Links to** St Patricks Well, Western Terrace targets

Bulls Head & Jindardie Lineaments

- **WNW-ENE** striking lineaments
- **Extends towards** Thunderbox Gold Mine
- **Links to** Bulls Head and Jindardie targets

The Music Well granite is fertile for gold deposits in major mineralised corridors, yet is largely unexplored





Consolidated >1448km² of exploration licenses

Compiled historic data and reports

Flown detailed magnetics and radiometrics geophysics

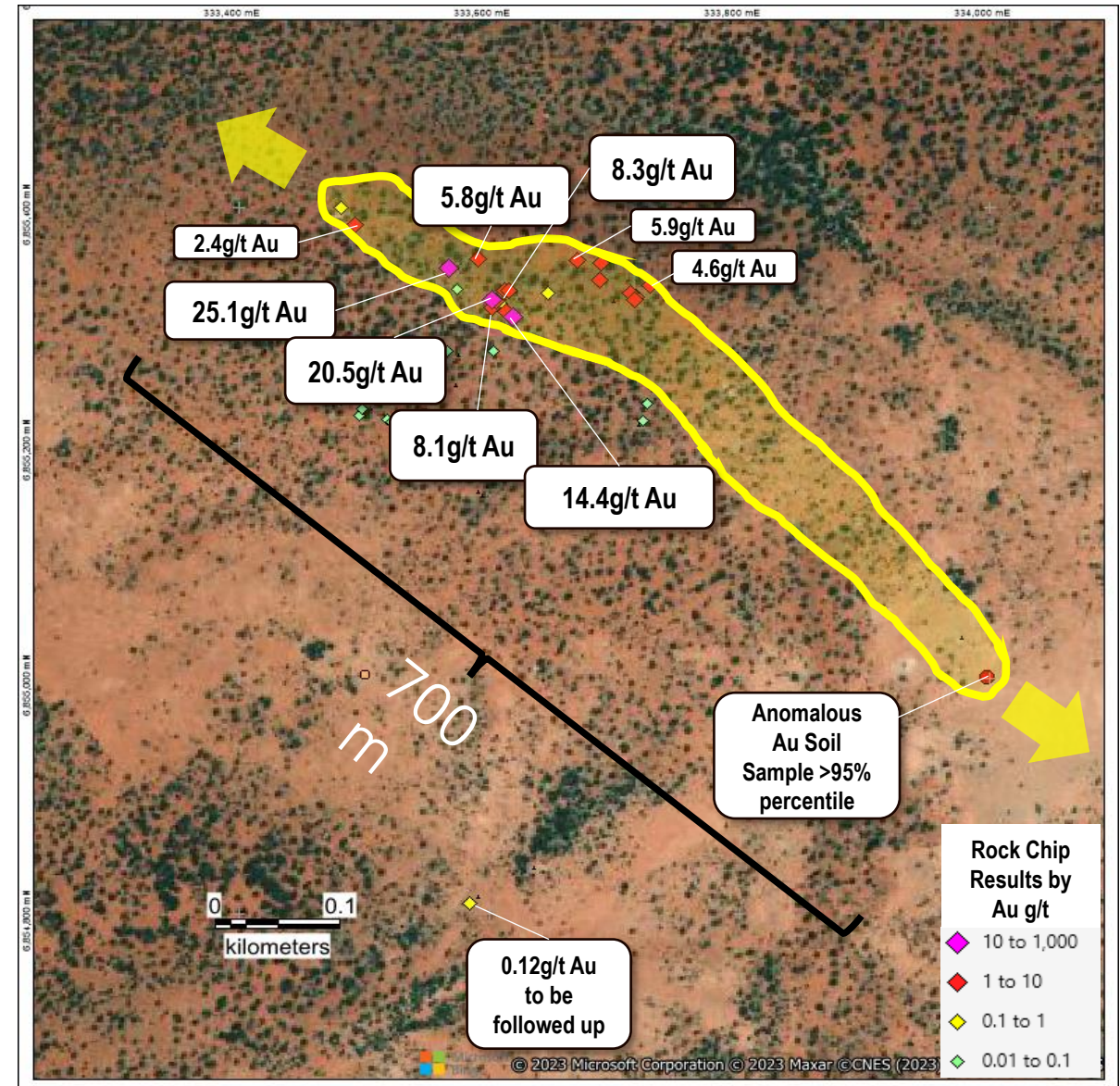
Collected regional gravity geophysics

Collected 2500 soil samples & >200 rock samples

Generated targets in collaboration with leading consultants

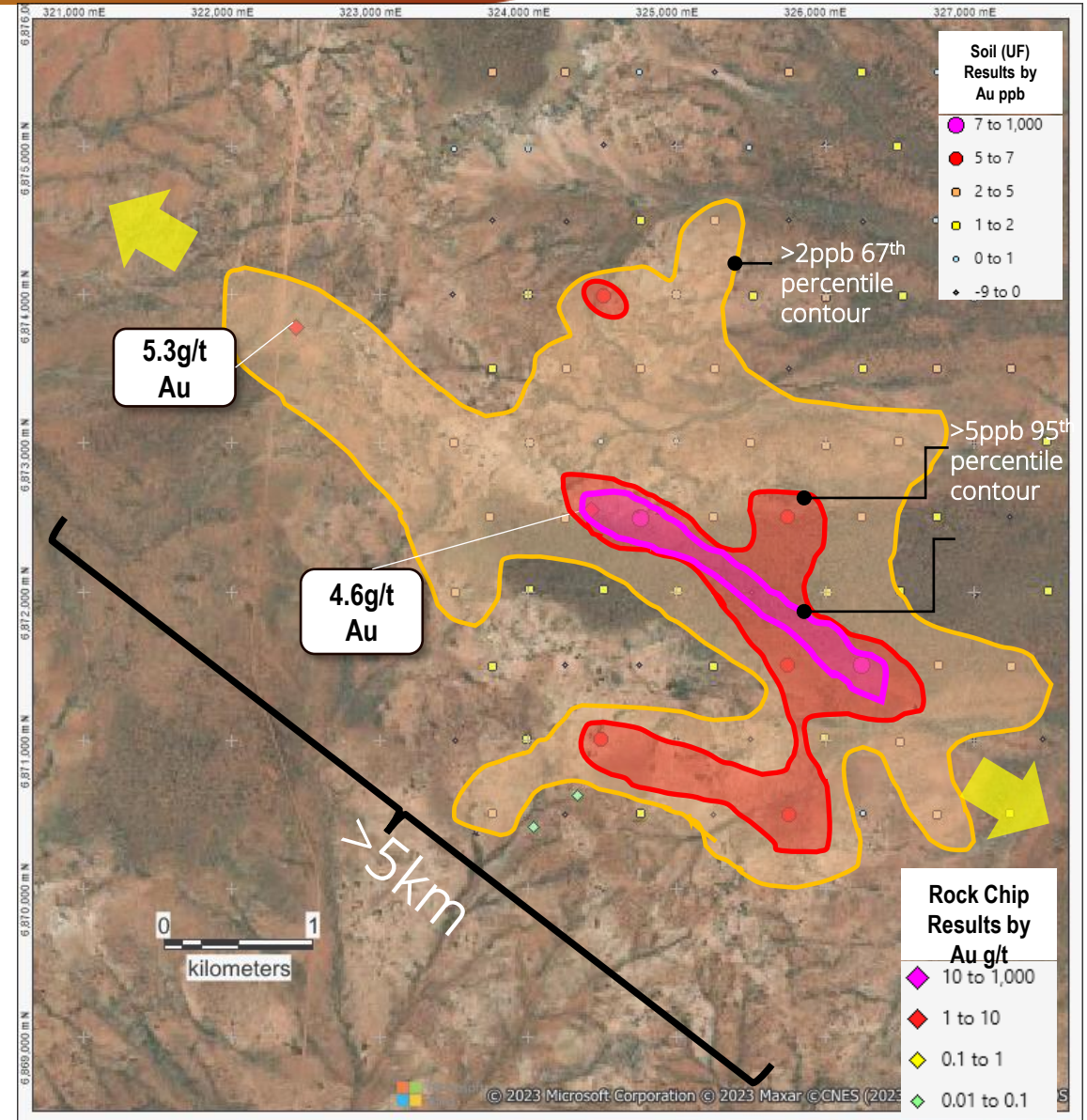
Music Well: St Patrick's Well ⁽¹¹⁾

- 700m long zone targeted with rock chips and soil sampling
- Multiple structures in 250m zone
- Rock chips up to 25g/t Au
- Granite hosted with mineralised/veined WNW-ESE shear zone – comparable orientation to **Wonder North 15km** along strike
- Drill ready



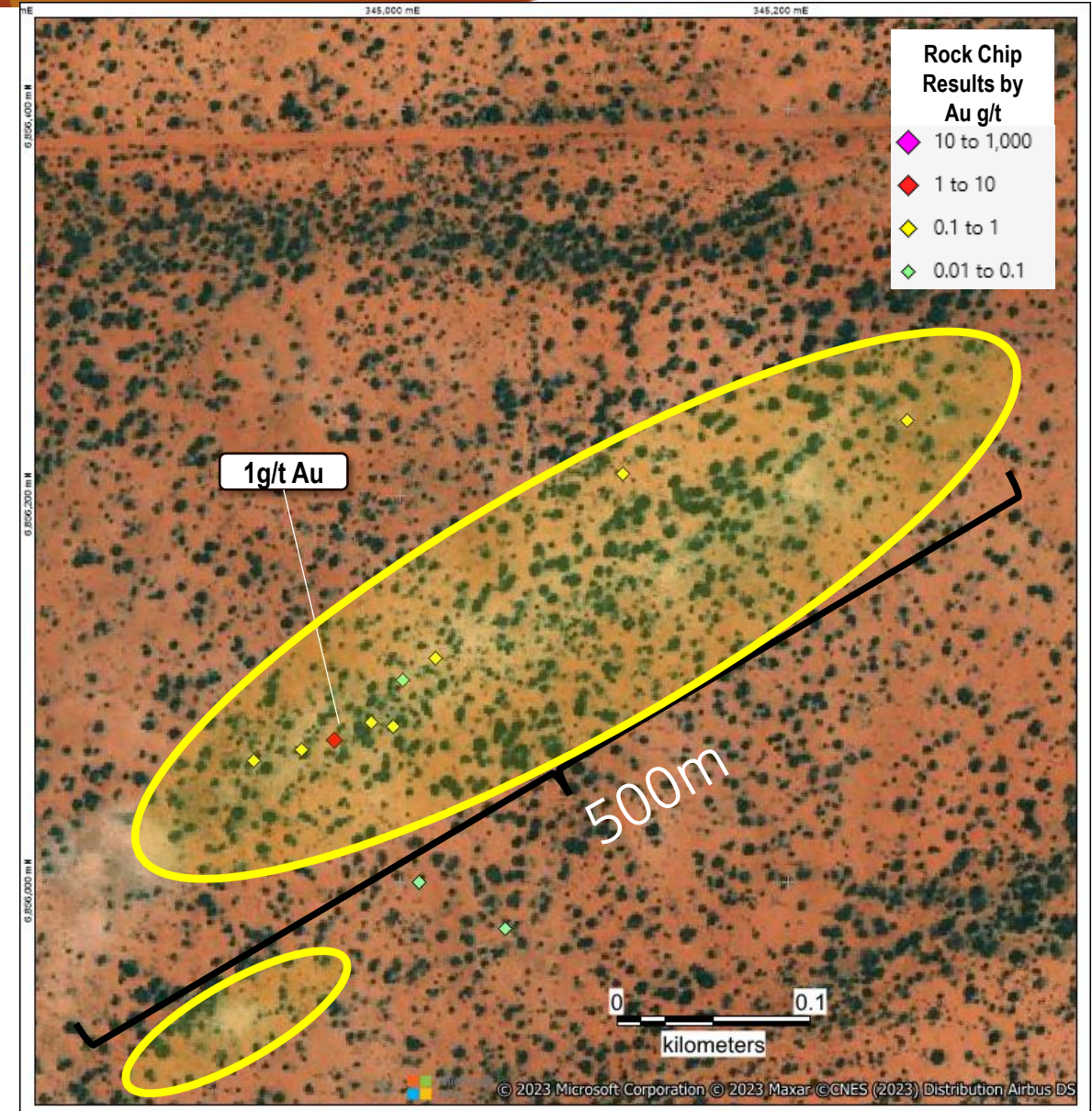
Music Well: Bulls Head Breakaway ⁽¹¹⁾

- >5km long gold in UF soil data and rock chips
- Rock chips 5.3g/t Au & 4.6g/t Au
- Significant NW-SE structure in magnetics & aerial imagery
- Granitoid hosted gold target
- Comparable setting to Wonder North (~1Moz) located ~10km to the south
- Drill ready



Music Well: Clifton East ⁽¹¹⁾

- 500m long zone targeted with rock chips
- Clear anomaly in aerial imagery
- Peak value 1g/t Au
- 8 samples between 0.1 and 1g/t Au
- Granite hosted with mineralised/veined ENE-WSW shear zone
- Drill ready

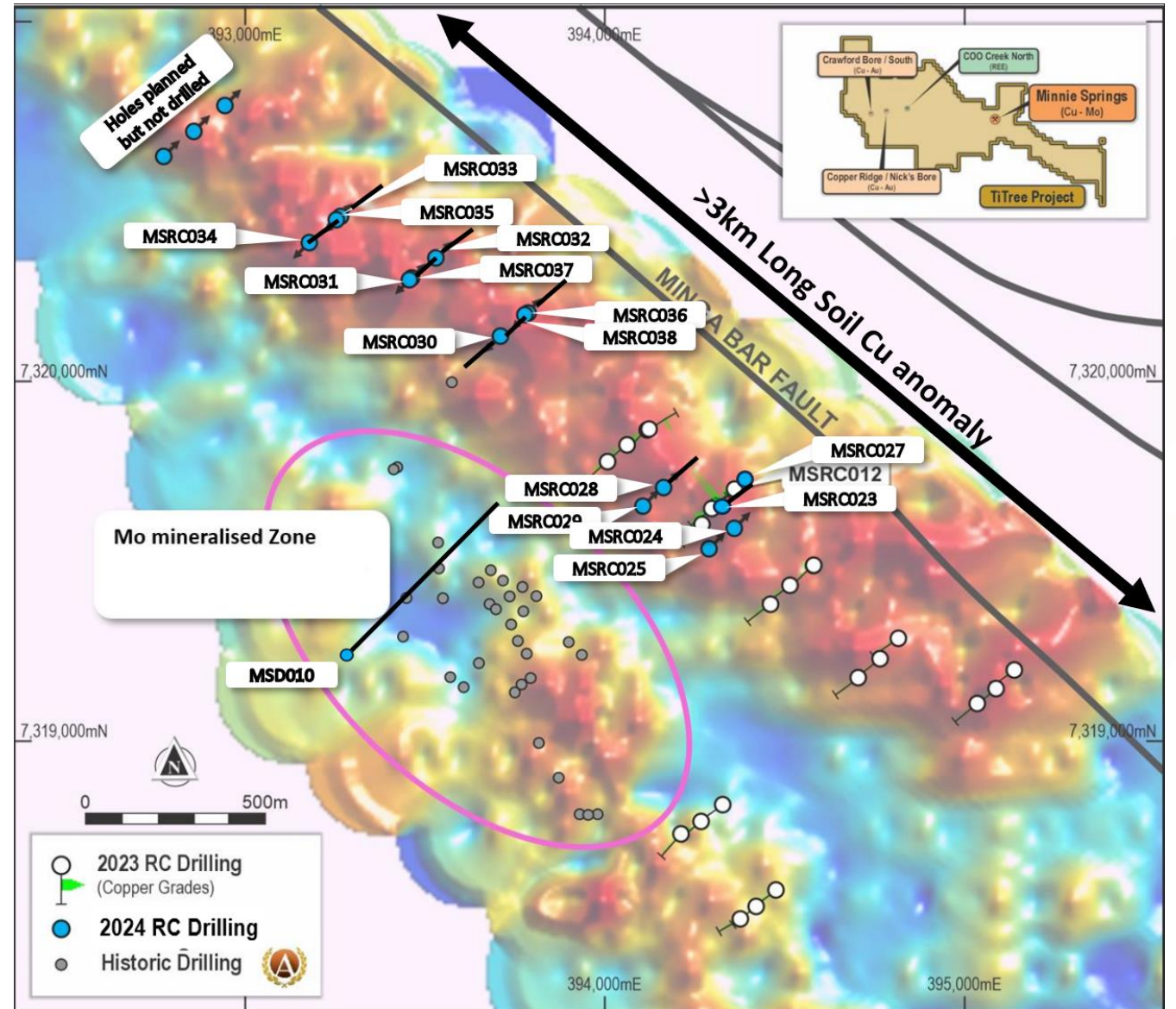


Copper

- 3km long Cu in soil anomaly
- Cu in Rock Chips up to 7%
- MSRC012: 18m @ 0.37% Cu, 9.6g/t Ag, 124ppm Mo
- MSCR012: 16m @ 0.38% Cu, 19.4g/t Ag, 284ppm Mo

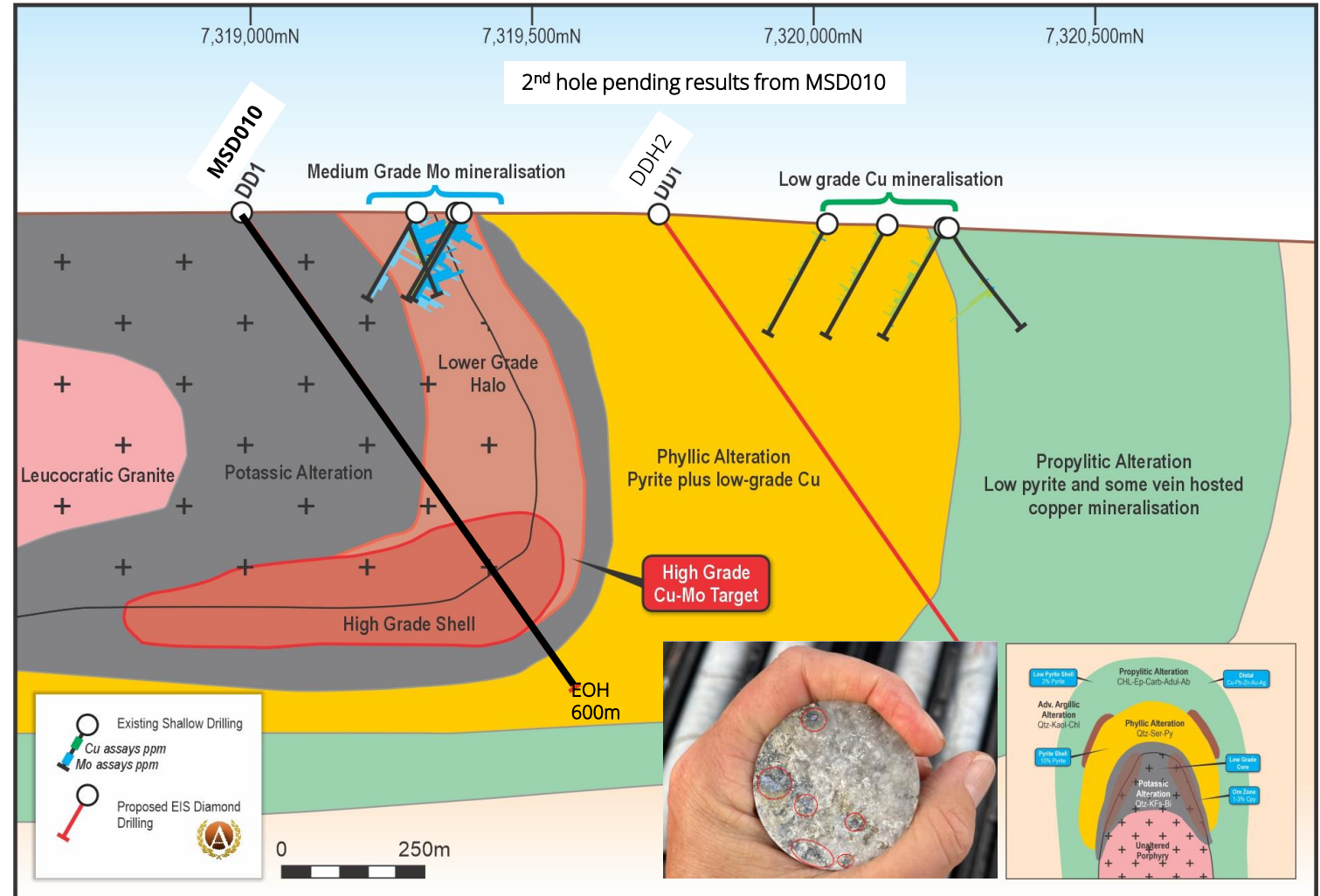
Molybdenum

- MSRC0010: 60m @ 640ppm
- MSRC008: 18m @ 910ppm
- MSRC007: 14m @ 1,082ppm



Ti-Tree Shear: Minnie Springs: Porphyry Cu-Mo ⁽⁸⁾

- Potential for near surface extensions to existing Mo mineralisation.
- Potential also identified for higher grade Cu and Mo zones at depth below “tilted” porphyry model.
- Previous drilling at Minnie Springs intersected mineralisation, geology and alteration halo consistent with the zoning of a large porphyry copper / molybdenum system.
- EIS supported hole MSD010 completed to 600m planned to test for the higher-grade zones at depth.
- Core has been sampled, assays expected mid-December.
- Second hole pending results of first hole



Ti-Tree Shear: New Prospects Identified in 2024 ^(4,9)

Project wide rock chip/soil sampling program

Claudius/Tiberius

- High grade Cu in rock chips to 34.6% Cu, 282g/t Ag, 20% Pb in area with no previously recorded workings

South Snowy

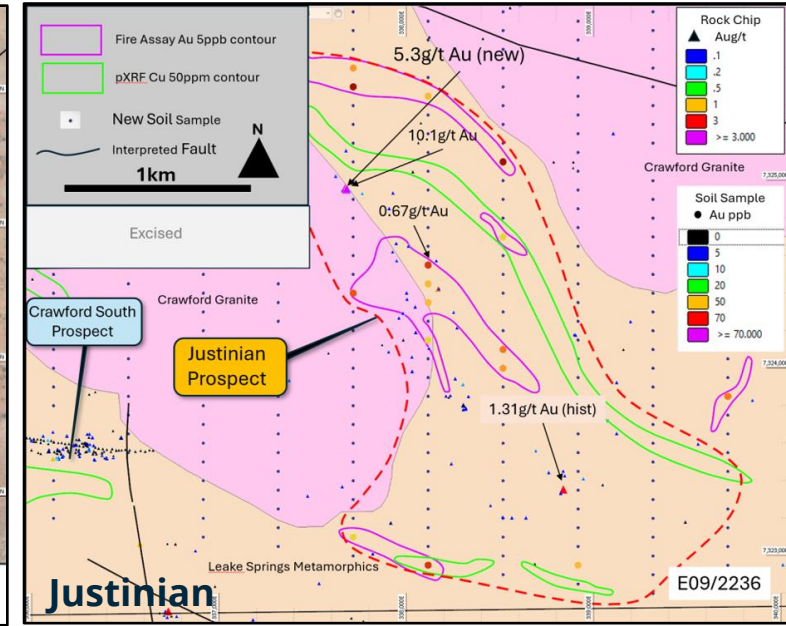
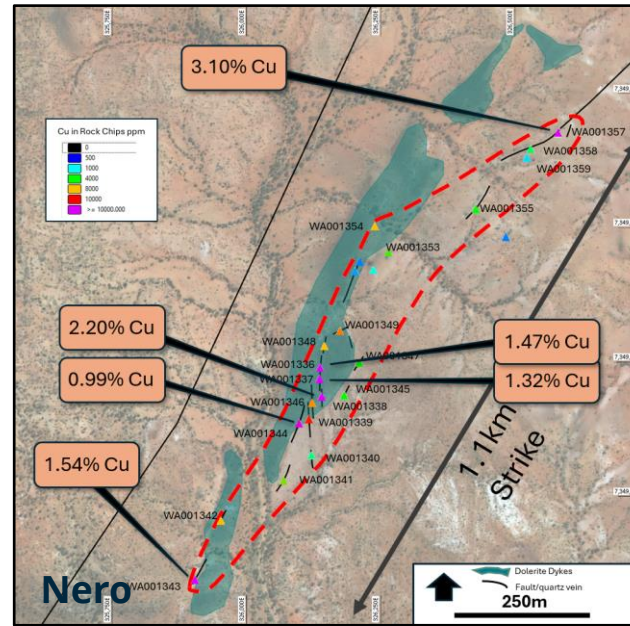
- Rock chips to 32% Cu, 3.26g/t Au and 129g/t Au from rock chips

Justinian

- 10.1g/t Au from Justinian
- Cu, Pb and Au soil anomalies

Nero

- Rock chips up to 3.1% and up to 11g/t silver have been identified from field work over a strike length of 1.1km



Copper rich brecciated quartz vein assayed 17.8% Cu, 65g/t Ag and 0.14g/t Au (Tiberius)

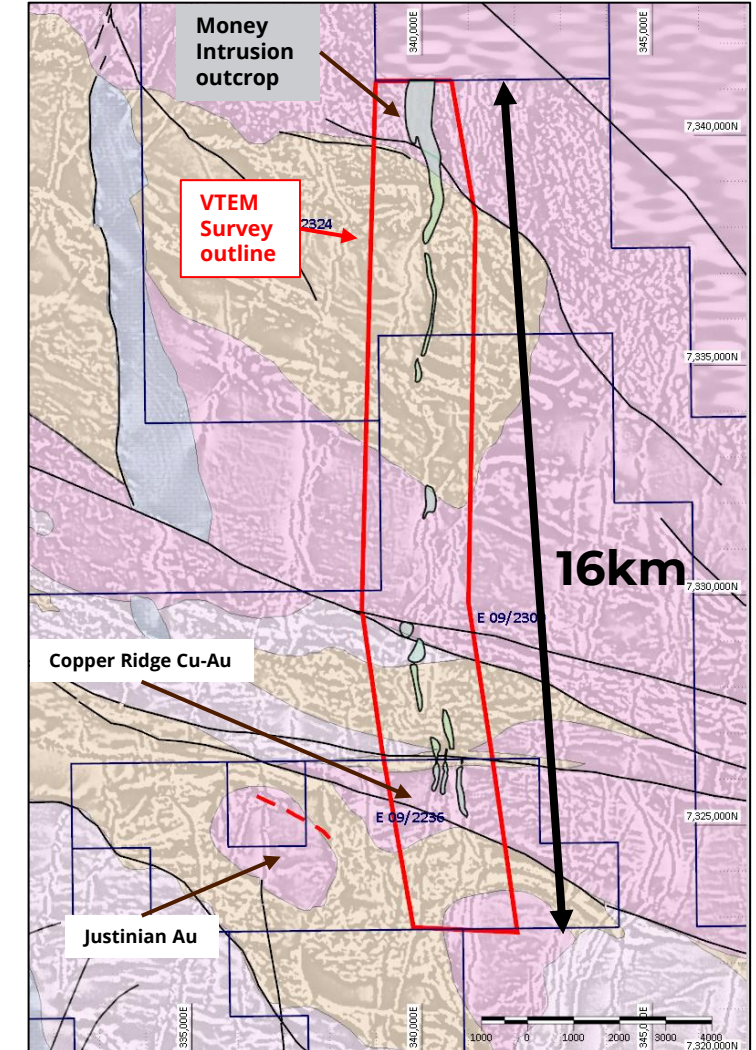
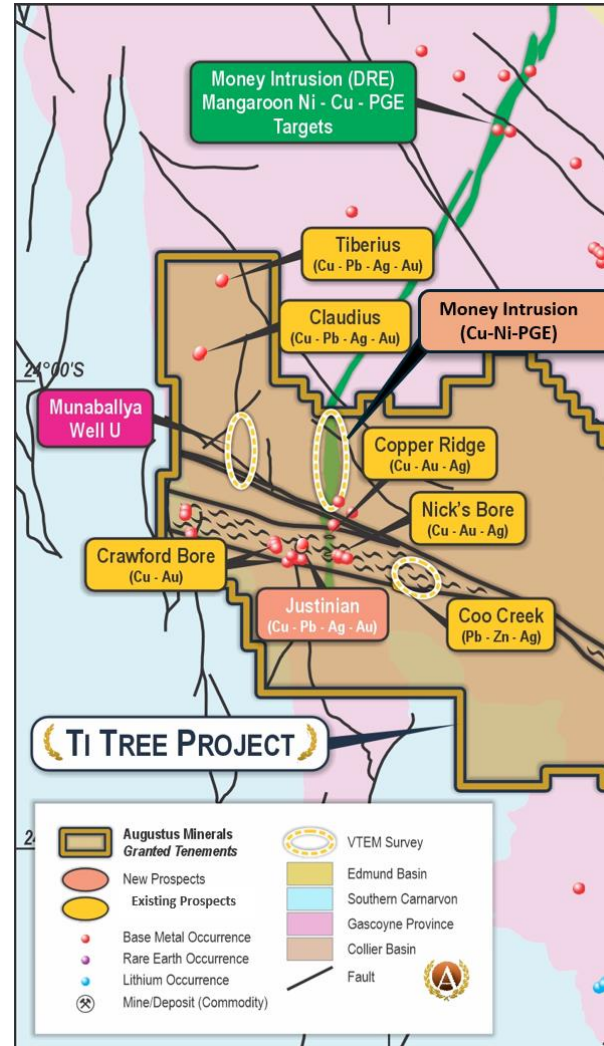


Galena rich quartz vein, assayed, 65g/t Ag, 20.5% Pb and 0.3g/t Au (Tiberius)

Ti-Tree Shear: Money Intrusion-Cu-Ni-PGE ⁽⁷⁾

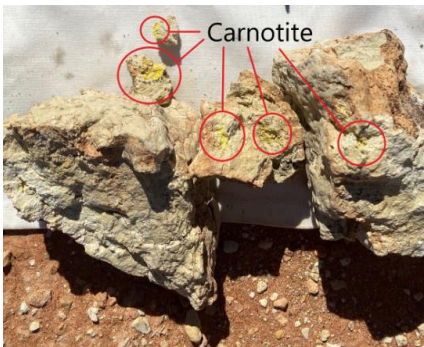
The dolerite at the Money Intrusion has proven potential to host Ni-Cu-Co-PGE

- Money Intrusion at Ti-Tree Project strike length >16km and 600m width in the north of Augustus tenure.
- Northern neighbour, Dreadnought Resources Limited (ASX:DRE) has conducted geophysics and drilling programs on the Money Intrusion ².
 - Drilling identified massive to semi massive sulphide mineralisation at Bookathanna North (50km NNE of AUG Tenure):
 - REYRC013: 23m @ 0.50% Ni 0.51% Cu 0.02% Co 0.49g/t 3PGE from 36m including: 2m @ 3.32% Ni 2.88% Cu 0.12% Co 1.46g/t 3PGE from 45m.
- VTEM Survey flown in August, results being modelled, field visit in progress



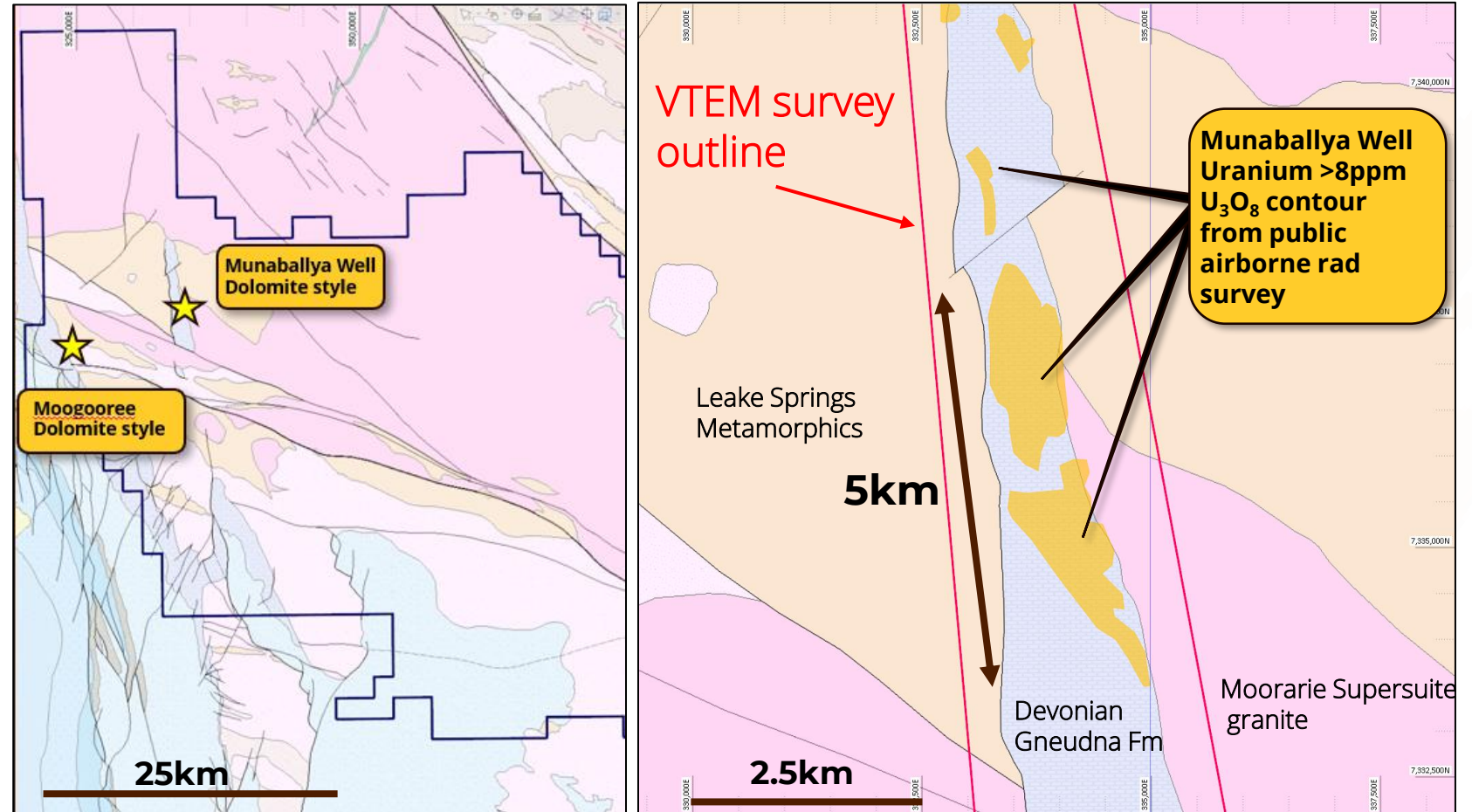
Potential for shallow uranium enrichment (300-500ppm U₃O₈) in weathered dolomitic marls.

- GSWA listed occurrence.
- Munaballya Well main basin U anomaly covers 5km x 0.7km.
- Uranium as carnotite concentrated in top 5-10m of weathered dolomitic layers.
- VTEM survey to test for:
 - near surface weathering of surficial zones
 - Deeper unconformity style



Sample WA001023 assayed 73ppm U₃O₈ with visible yellow carnotite

Munaballya Well Uranium Prospect



Ti-Tree Shear Project

Early Discovery – Progressing drill testing of Cu-Mo porphyry at Minnie Springs

Highly prospective - regional land holding (>3,600km²)

Focused on high demand commodities – copper, gold, uranium

Music Well Gold Project

Tenure over mineralised structures with rock chips to 25.1g/t Au (St Patrick's Well)

Area of high gold endowment with minimal historic exploration

Well funded - \$3.78M cash



AUGUSTUS MINERALS

LIMITED

Andrew Ford
GM Exploration

Brian Rodan
Executive Chairman

ASX:AUG

(08) 6458 4200

admin@augustusminerals.com.au

www.augustusminerals.com.au



References

- ¹Augustus Minerals Limited (ASX:AUG) ASX Announcement “Prospectus” on 23.05.23
- ²Dreadnought Minerals Limited (ASX:DRE) ASX Announcement “Mangaroon Ni-Cu-Co-PGE Reverts to 100%” 12.03.2024
- ³Augustus Minerals Limited (ASX:AUG) ASX Announcement “Maiden Drilling Results Ti-Tree Project” on 29.01.24
- ⁴Augustus Minerals Limited (ASX:AUG) ASX Announcement “High Grade Rock Chips to 18% at Ti-Tree” on 23.4.24
- ⁵Augustus Minerals Limited (ASX:AUG) ASX Announcement “1km long Copper zone grading up to 3% discovered at Ti-Tree” on 4.09.24
- ⁶Augustus Minerals Limited (ASX:AUG) ASX Announcement “Airborne EM over Multiple Targets on Ti-Tree Project” on 25.6.04
- ⁷Augustus Minerals Limited (ASX:AUG) ASX Announcement “Airborne EM commences at Ti-Tree Project” on 6.8.24
- ⁸Augustus Minerals Limited (ASX:AUG) ASX Announcement “Mineralisation intersected at Minnie Springs Porphyry Prospect” on 28.10.24
- ⁹Augustus Minerals Limited (ASX:AUG) ASX Announcement “Justinian Extended to 3km with 16% Copper and 5.3g/t Gold” on 22.10.24
- ¹⁰ Augustus Minerals Limited (ASX:AUG) ASX Announcement “Minnie Springs Exploration Target Clarification” on 29.10.24
- ¹¹Augustus Minerals Limited (ASX:AUG) ASX Announcement “Music Well Gold Project Exploration Update” on 18.11.24

Appendix - References

Table 4 Mineral Resources and Gold Deposits of the Leonora-Laverton District

Deposit	Measured			Indicated			Inferred			Total		
	Tonnes Mt	Grade g/t Au	Au Ounces (000s)	Tonnes Mt	Grade g/t Au	Au Ounces (000s)	Tonnes Mt	Grade g/t Au	Au Ounces (000s)	Tonnes Mt	Grade g/t Au	Au Ounces (000s)
Leonora ¹	5.6	3.9	710	76	2.7	6,600	24	2	1,600	110	2.6	8,900
Hub/ Redcliffe ¹	0.16	4.6	24	2.3	2.7	200	10	1.4	450	13	1.6	670
Mt Morgans (Laverton) ¹	1.7	1.8	99	26	1.5	1,300	28	1.4	1300	55	1.5	2,700
King of the Hills ²	8.5	0.7	193	75.9	1.4	3,420	10.74	1.4	476	95.2	1.3	4,090
Darlot ²	0.133	1.4	6	8.8	3.9	1,107	8.7	2.9	820	17.6	3.4	1,933
Thunderbox/ Bronzewing/ Wonder ³	20.7	1.5	1,023	44.8	1.9	2,741	9.6	1.5	468	75.1	1.8	4,232
Agnew ⁴	0.093	5.54	17	6.2	4.4	899	4.1	4.27	564	10.4	4.4	1,480
Sunrise Dam ⁵	15.5	1.89	940	18.8	1.87	1,130	24.9	2.3	1810	59.2	2.1	3,880
Granny Smith/Walla by ⁶	2.2	5.17	359	13.2	4.6	1,925	8.2	5.13	1345	23.6	11.0	3,629
Apollo Hill ⁸	5	0.55	82	54	0.53	912	47	0.056	845	105	0.5	1,839
Duketon ⁷	14	0.8	360	32	1.4	1,430	14	1.5	680	59	1.3	2,480

¹Genesis Minerals "2024 Annual Report" 29 August 2024

²Vault Minerals "September 2024 Quarterly Activities Report" 28 October 2024

³Northern Star "2024 Annual Report" 22 August 2024

⁴Gold Fields "Mineral Resources and Mineral Reserves Supplement to the Integrated Annual Report 2023" 22 February 2024

⁵AngloGold Ashanti "Mineral Resources and Mineral Reserves Report" as at 31 December 2023"

⁶Saturn Metals "Saturn Metals Annual Report June 2024" 28 October 2024

⁷Regis Resources "Regis Resources Limited Annual Report 2024" 22 October 2024